

THE IMAGES OF THE DAVID LEVY LOGBOOKS are for personal and research use for non-commercial purposes. The image copyright holders are David and Wendee Levy, Jarnac Observatory, while the copyright for all other material is held by the RASC, unless otherwise indicated. Users are allowed to download or print materials from this website for purposes of research, teaching, and private study, without prior permission provided that the materials are properly credited to the copyright holders, David and Wendee Levy, Jarnac Observatory, and the RASC. All other uses such as commercial or scholarly reproduction, redistribution, publication or transmission requires permission from the copyright holders, and fees may be required. Please contact levylogbooks@rasc.ca to obtain permission, and fees information.



McGill

07-05.

- 14658E 2005 07 10/2030-2230/10/Jarmac/
CN3 with Apollo 0.5 h / CN3R // with Clyde
CN3 bgh with Hyperion CMP-1 O Draconids
CN3e with Clyde TV Cw 18.5
- 14659M2 0245-0430/10/Jarmac/ CN3d with
Munera 1.3 h E.
- 14660S. 07 11/1230-1245/10-3/Jarmac/ SS2 with
Muntaka 4:29, 1.
- 14661E2 2000-2300/10/Jarmac/CN3k//with Clyde,
CN3 bgh with Hyperion.
CN3 feeding. CMP-1 omission Draconids
& α Lyrids. Meteor on Tempel night was
probably an α Lyrid; less possibly
an ~~omission~~ Draconid.
- 14662S 07 12/0700-0715/3/Jarmac/ SS2 2:10, 2.
- 14663S2 1915-1930/3/Jarmac/SS2 with
Cordelia 2:10 3: 9, 5 prominences.
- 14664E 07 13/2130-2200/3/Jarmac/CMP-1 Omission
Draconids + Alpha Lyrids.
- 14665S 07 14/1200-1230/3/Jarmac/SS2 with
Mintaka 1:10, 5 prominences including
one lacy thin one, very tall.
- 14666S2 1545-1600/3/Jarmac/SS2 with Cordelia

1:9, 7 prominences including one very bright one newly formed.

14667E July 14/ 2030-2230/ 3/Jarnac/Wendee opened observatory J2 + photographed TV Corvi. / CN3e + V Crv 18.5 CN3k II with Clyde. CMP1 & Lyrids + o. Draconids.

14668M2 0245-0430/ 10/Jarnac/CN3b with Samwise 1^h E, extreme NE N of Capella. CMP-1 & Lyn o Dra.

14669S July 15/ 1815-1845/ 3/Jarnac/ SS2 with Cordelia 1: 8, 2 prominences - one large & beautiful - Picture.

14670E2 July 15/ 2130 to midnight/ 3/Jarnac/ CN3k II with Clyde.

14671E July 16/ 2330 to midnight./ 3/Jarnac/ walk.

14672E. July 18/ 2030 to midnight/ 3/Jarnac/

14673S July 20, Eclipse 1963, + Apollo 11 day/ 10:00 - 10:30/ 3/Jarnac/ SS2 with Mintaka, 1^h, 2 p. (date uncertain.)

14674E2 July 20, date certain! Eclipse of 1963. Apollo 11 in 1969, and Viking in 1976. 12308. 0000/ Walk.

14675S. July 21?/ 1600-1615/ 3/Jarnac/ SS2 with Echo 1: 6.

08-05

14676E. July 22/2230-2330/1/ Sierra Vista, the David Patterson observatory / Wendee, Thom + Twila, David Patterson, and other Huachuca astronomy club members.

14677E. July 23/2330 to midnight/1/Jarnac/walk with the Beagle.

14678E. July 24/2340 to midnight/2/Jarnac a walk with the Beagle.

14679E. July 25/1930-2245/3/Jarnac/Wendee/RD 24 with Esther. Multiple photos M20.

14680E July 27/2230 to 2315/3/3 Jarnac/walk.

14681S. July 28/1500-1700/3/Jarnac/very large complex prominence on Sun. SS 2 with Cordelia, 1:8, 1 prominence / Wendee, Vince.

14682 M2. 0100-0100/2/Jarnac/walk with The Beagle.

14683 SEM. July 29/1435-0130/8/St. Timothée, CASCA meeting / Minerva - CN3 1^h W. 10km² SS2 1:8, 1 big prominence - not as big as above. Om. Draco Meteor went through Vulpecula - trace to Draco.

14684 S. August 1/1545-1630/3/Pavilion David Levy south of Quepas City / Moperva. First visit to the educational building named in my honor.

14685 E M2. 2300-0045/6/RASC, McGill / walk. Final? visit to Williamson Observatory.

14686M. August 2, 2005 / 0015-0100 / 6/8/8 to Summit /
Walk along place where I first saw
Comet Ikeya-Seki in 1965.

14687EM. August 3 / 2225-0025 / 6 / McGill / Walk
over McGill campus, past Rutherford's
experiments a century ago & the 1967 Board
meeting for a society expulsion...

14688SE August 6 / 1100-2230 / 3 / Stellafane / Visit
with Philip, Wendee, Gail, Janie, & many
others including Sue Rugeley. Shadow
gram talk in honor of John Dobson,
who signed Minerva in front of 2500+
people!

*14689AN. August 7 / 2100 to 0445 / 10H / The Second
Adirondack Astronomy Retreat. We
observed meteors - Perseids, Delta Aquarids
and at least one Omicron Dragonid meteor that
I saw spotted. Total # of meteors =
The sky was as clear as I have ever ever
seen. On the way, Wendee & I noticed
how clear the mountains were.

The sky was beautiful even by
1964, 1965, and 1966 standards. We
observed at Tepee Hill, although others
observed closer to the lodge on the other
side of the pond. Alex Scheline, David Land
& Al were there - David & Al only
for the first part but they were from

14686M. August 2, 2005 / 0015-0100 / 6/8/8 to Summit /
Walk along place where I first saw
Comet Ikeya-Seki in 1965.

14687EM. August 3 / 2225-0025 / 6/ McGill / Walk
over McGill campus, past Rutherford's
experiments a century ago & the 1967 Board
meeting for a society expulsion...

14688SE August 6 / 1100-2230 / 3/ Stellafane / Visit
with Philip, Wendee, Gail, Janie, & many
others including Sue Rugeley. Shadow
gram talk in honor of John Dobson,
who signed *Murius* in front of 2500+
people!

*14689AN. August 7 / 2100 to 0445 / 10H The Second
Adirondack Astronomy Retreat. We
observed meteors - Perseids, Delta Aquarids
and at least one Omicron Dragonid meteor that
I saw spotted. Total # of meteors =
The sky was as clear as I have ever ever
seen. On the way, Wendee & I noticed
how clear the mountains were.

The sky was beautiful even by
1964, 1965, and 1966 standards. We
observed at Tepee Hill, although others
observed closer to the lodge on the other
side of the pond. Alex Scheline, David Land
& Al were there - David & Al only
for the first part but they were from

08-05

the years of the Adirondack Science
Camp. Beautiful views M31, NGC 869+884
CN3S with Minerva: 4 hours W, N, and E.

*14690EM Monday August 8/2000-0100 / The Adiron-
dack Astronomy Retreat, Adirondack
Science Camp / 3-2 / Minerva / Sky 3.
Too cloudy to be comet hunting - our group,
sitting between the pond, Cabin 2, and the
Lodge was having fun. David Largach,
Alex Schepine, and Bob Summerfield,
Peter and Dianne Jedicke, Wendee
especially - all enjoyed the night.
We occasionally walked back to the kitchen.

*14691M2 August 8/0300-0430/3 / The Adirondack
Astronomy Retreat, the Adirondack Science
Camp / ☉ CN3S: 0.8h, E and NE
Discussion and observing with Robert
Summerfield. He was using 6" F/5 (primary)
binocular telescopes. Wow! Very good
imagers. Minerva's view of M31 wasn't
top bad either. Sky significantly better
than earlier.

*14692S. August 9/1200-1410 / SS2 with open
Robert Summerfield's telescopes at the
Adirondack Astronomy Retreat. SS2 15, 3
prominences. Three very nice prominences.
Then Wendee, Dianne, Alex, and I
visited Horseshoe Lodge.

*14693AN2. August 9/ 2030 to 0430/10, 3/ the
Adirondack Astronomy Retreat at the
Adirondack Science Camp / Wendage,
Alex Scheeline, Peter + Dianne Gedicks,
the group much larger than last year,
and Robert Summerfield too!
C113s with Minerva 3, 3^h W, N, and E.

14694M. August 11/ 0200-0240/3/ Jarnac/
CMP / Perseid Maximum. 10mtears
Mostly Perseids, before clouds came.

14695E August 14/ 2145-2345/3/ Ride from
Phoenix to Jarnac. Wendee met me at
Ina for part of ride. Moon setting
over the Peacha Peak.

~~14696EM~~ 15/ 2230-0100/2/3/ ~~to~~ changing CCD / ~~get~~ back on Eather.

14697SEM. August 16/ 1530 to 1545, break, then
1800 to midnight, actually to a.m. /
3/ Jarnac / SS2, with Mintaka to 1:6, 1 prom.
RD 24. I took a nice series of pictures
of M4, with Eather and also with lens
atop Eather.

14698E2/ Aug 17/ 1800-2300/3/ Jarnac/ First
installation session with Obadiah.
Wendee, Dean, Thom, Twila.

14698SE August 18/ 1900-2130/3/ Jarnac/ Magni-
ficent sunset and green flash. Changing
CCDs back and forth on Eather.

14699E2. August 18/2330 to midnight / 2 / Jarmac /
walk with The Beagle. 08-05

*14700SE. August 19/1930-2345/3 / Jarmac / RD 24 /
14 photographed through freshly focused
Ester and lens.

*14701SEM. August 20/1430 to 0100/3 / Jarmac /
C.N3h with Obadiah, + Wendee, Dean, +
Roy Tucker. Vince came with ~~More~~ tools to
upgrade Minerva: Now 1.3th mount + 5th
Optical Tube Assembly. ① He put on lighter
weight legs on the mount.

② He installed, with me, my fishing reel
from earlier mount.

③ We - or he actually - moved eyepiece
end to a more convenient angle.

④ Then Dean + Roy + I assembled
the new CCD on Obadiah. Focus is 1.5"
off, + neither CCD nor scope talks with
computer.

14702E. August 23. / 2330 to midnight / Walk
with The Beagle. Strong lightning to N +
for NW in anticipation of major storm
moving in.

14703E. August 24 / 2100 to 2230 / 3 / Jarmac /
Test of Minerva at J5, J1, + in ~~the~~ back
yard. In order for encoders to function,
Minerva needs to be at least approximately
leveled in base, and in OTA.

14704E. August 25/1930 to 2/30/3/ Jarnac /
Venus closing in on Jupiter - Wendee and
I saw the two planets. With Minerva,
CN3s, 1h W, SW.

14705E August 26/1945 to midnight/10/ Jarnac /
Wendee / CN3c with Miranda - 1h W, SW
Wendee and I saw Mars & rising
at end of this session. / Sydney Leach, Simon
Choo Min Chung, Bernard Arghiere, Ivan Blanco

*14706AN August 28/1800 to 06.30/10+ / Inca Utama
Hotel, Lake Titicaca, Bolivia / Minerva,
Akiyacka, other telescopes / Sid Leach, Simon and Choo
Min Chung, Bernard Arghiere, Lance Humph-
reys, and our guide Ivan Blanco.

x. . .
= L285
CN3c: NGC 6438 11.1 1.5 Octans Round Galaxy ^{near} pole
NGC 6101 9.2 10 Apogee Globular cluster
NGC 1313 8.7 9.0 Reticular barred spiral
NGC 2031 10.8 3.3 Mensa Open Cluster with nebulas
NGC 2103 ? ? in the Large Magellanic Cloud
NGC 2070 8.3 38 ^{in the} Tarantula Nebula in LMC
NGC 2103 2060 OC ^{with nebulas} ^{associated?} with ²⁰⁷⁰
NGC 1866 9.8 4.7 OC in Dorado LMC
NGC 2547 4.7 19 Bow + Arrow OC in Vela
NGC 437A 7.8 B Musca OC

And earlier in the evening (before I started
writing things down, there was
6752 in Pavo 5.4, 20 They're called the great
6397 in Pavo 5.6 26 clusters in Ara & Pavo.
Lance called my attention to them.

08-05

This night was truly spectacular. As the sky darkened Spica, ~~then~~ Jupiter and Venus appeared in mutual embrace. ^{s.5}
The Milky Way came out not as a Milky Way but as ~~as~~ the mottled way of stars that it really is. The mottling was obvious even before twilight ended.

mac. /
de and
riva,
Jernac /
h W, St
ing
A. Siment
may, S. B. B. B.
Utama
rva,
Chae
a thump-
h W, S, E.
Galaxy (near)
pole
airal
with nebulosity
mic Cloud
LTC
LTK
2070
ic
la
tasted
the great
at law.

*14707AN. August 29/1910 to 0630/10+1 Inca Utama Hotel, Lake Titicaca, Bolivia / Sid, Summit Chee Ming, Chung, Bernard, Lance, Guan & others / Minerva, Lloyd the 10", plus a 22" at the nearby observatory with Lance.

CN3 with Minerva. 4.2 hours W, S, & E.
CN3c list M D Comment

NGC 3766 5.3 || Rich OC in Centaurus
GC 2944 4.5 OC with nebulosity in Cen.
Together, these are joined by the famous line of stars that forms "Wendee's Reversed J" or "Wendee's hook."

NGC 5927 8.3 || GC-comet-like - in dupes Proxima Centauri - Bernard, Arghiere suggested we try to find this nearest to the O. It is 10.8 mag in a rich* field. It is difficult. We spent ~1.45^{hrs} locating it in Minerva, confirming it in Lloyd the 10", and using 2 different charts to do so.

... ○ ~5 min field.

14707AN CN.3. list concluded
Cont'd. NGC 5927. ^{comment} "already listed overleaf."
Barnard 263.

This is a dark nebula with an
altitude. $\approx 1/4^\circ$ of absolute blackness -
no stars. Very black nebula.

NGC 6281 5.4 7.9 The "A" Frame open cluster
in Scorpius.

NGC 6231 2.6 230 "Big Red" Cothens
Call it "table" OC.

- see yesterday
NGC 1313 8.7 9.0 Reticulum Barred Spis
NGC 1566 9.7 8.2 Dorado Spiral

Between 3+4 we went to the 22 where
Lance gave us a "Hot Spot" Tour of
the LMC + SMC. Here is what we saw:

Lance's notes }
what we saw } NGC 2070 Tarantula - more like flower petals
NGCs 2084, 83, 78, 79 - nebula complex
NGC 1955 area: large nebula +
NGC 1974, 68 OC with neb on E edge
NGC 1858, 1850, 1855, 1860
Open clusters + nebulae.
NGC 2083. bright nebula
NGC 2029, 2032, 2035, 40 bright nebulae
NGC 1880, 1881, 1874, 1876, 1877, 1872.
OC / Neb group running N-S
NGC 1916, 1898 globularae
NGC 1722, 1712, 1727 OC / Neb.
NGC 1745 br. nebula group 1743, 1737, 1748
NGC 1935, 1934, 1936, 1929 Glob. C / Neb. complex
NGC 2035, 2032, 2029, - nebs. etc.

08-05

14707AN LMC concluded.

concl.

NGC 1955 area OC complex in arch
like the one in Scapio (6231!) - see opposite

NGC 1761, 1763 nebula complex

NGC 2122 OC with nebula

And now the SMC:

NGC 104 47 Tuc absolutely beyond
belief in the 22!"

NGC 362 GC, and nearby.

NGC 346 Neb. field with 371 395,
IC 1624

NGC 346 bright neb. + NGC 371 are the
brightest.

In detached area NGC 456, 460, 465
OC + Neb. complex.

Session ended with breakfast at 6 am.
What a night! Sid got some good pics
after wrestling with polar alignment. Simon
observed next to me. Great night

*14708AN August 30/1900 to 0630/10+ though not quite
as good as 2 preceding nights / Inca Utana Hotel,
Lake Titicaca, Bolivia / Sid, Simon, Bernard,
Lance, + Juan / Minerva, other scopes /
Simon lent me a 9mm Nagler for deeper
comet hunting.

Lance led the others with the 22" in
a globular cluster marathon. They found
100 clusters, from 47 Tuc to some faint
Palomares globulars. With my CBS sighting of IC 499, it's 101.

748
complex

08-05

14707AM LMC concluded.

concl.

NGC 1955 area OC complex in arch
like the one in Scapio (6231!) - see opposite
NGC 1761, 1763 nebula complex
NGC 2122 OC with nebula

And now the SMC:

NGC 104 47 Tuc absolutely beyond
belief in the 22!"

NGC 362 GC, and nearby..

NGC 346 Neb. field with 371 395,
IC 1624

NGC 346 bright neb. + NGC 371 are the
brightest.

In detached area NGC 456, 460, 465
OC + Neb. complex.

Session ended with breakfast at 6 am.
What a night! Sid got some good pics
after wrestling with polar alignment. Simon
observed next to me. Great night

*14708AM August 30/1900 to 0630/10+ though not quite
as good as 2 preceding nights. Inca Utamattok,
Lake Titicaca, Bolivia! Sid, Simon, Bernard,
Lance, + Juan / Minerva, other scopes!
Simon lent me a 9mm Nagler for deeper
comet hunting.

Lance led the others with the 22" in
a globular cluster marathon. They found
100 clusters, from 47 Tuc to some faint
Palmer globulars. With my CNs sighting 10499, it's 101.

*14708AN com 4. CN3s with Minerva 7.1 hrs. W, S + E.

CN3c objects: M D

NGC ~~64~~ 6684 10.4 3.9 Pavo Round Gal

IC 4499 - I was using the 9mm eyepiece -
with bright core -
came in during this comet search.

NGC 1763 ? Mag. Dorado nebula
with dust and cluster LMC

NGC 1734 ? 12 Dorado OC LMC

NGC 1433 9.8 6.3 Horologium EG

NGC 1527 10.8 3.5 Horologium VEG, BC

NGC 1512 10.3 8.5 Horologium RG

NGC 1808 9.9 6.3 Columba, Very EG, BC

We (Sid + I) tried to see the Horsehead
using Minerva, 9mm + H_β. It appears
as though I saw it! Will confirm tomorrow.
As dawn came I realized I couldn't find
Minerva's cover after bkfst Sid + I
found a long metal pole (I had placed the
cover in the lake) and he fished it out.
Good as new after I wash in the sink from
its night in the lake.

*14709AN. Wednesday, August 31/1855-0615/

10+ / Inca Utama Hotel, Lake Titicaca,
Bolivia / Sid, Bernard, Simon + Chee Min,
Lance, Ivan, Manuel from the University
& two groups of tourists. Their guide
approached me just after I had begun
comet hunting and said "These are

08-05

tourists from Spain & England. You will point out some stars and the constellations to them. OK, I will. I pointed out α Cen and its distance of ~~200,000~~ 4.3 light years, then the SMC and its distance of 200,000 light years, and the stunning mottled view of the Milky Way overhead. I said how this majestic sky offered us a look into space AND time. I reinvigorated myself with this sky. One of the guests recognized me. Then I continued with my search.

Earlier two German tourists had come by - they were nice & one was into astronomy and was very surprised & pleased to find me here, but not to find me observing here.

Then I continued with my search.

Manuel from the University came with his Meade 10 - I had promised to help him fix it. It included a call to Scott Roberts, and I think it is working. Then we looked at 47 Tuc with it.

Then I continued with my search.

The fishing line broke on the back of Minerva. I fixed that and then I continued with my search.

A midnight break, then I continued with my search. The fishing line broke on the front of Minerva. I tied it together. Then after the Horsehead, I finally

sketch of horsehead
+ surrounding
reflection nebula

14709AN
cont'd.

concluded my search
The Horsehead: We tried an
experiment. I was agreed to let me
leave the O₂ canister with my telescope.
I could not find the horsehead at
first even with O₂ high power, and
Sid's H₂ filter. But after I got into
a rhythm, I found that with the
20mm low power eyepiece, no filter,
it appeared. Even easier as a dark
smudge when I used the O₂ from the
tank. The best view: Minerva,
its 9mm eyepiece from Simon, its
H₂ filter from Sid, and the O₂ from the
hotel.

Earl IC 4499: Earlier I tried
the same expt with this cluster, no
filter. With the 9mm it appeared as a
featureless blob of hazy light. Then
I started breathing O₂. In the course
of a minute I began to see some detail
near the center. No resolution, but
the cluster became considerably
brighter and more defined toward the
center.

CN3s 4^h W, S, and E, mostly with 9mm.
CN3c Trumpler 14 5.5 4.7 Beautiful,
especially so with η Carinae just south of it.
This cluster is of τ 's embedded in nebulosity.
IC 4499 was studied by Lane,
Bernard, and Simon—the big players.

(Also: O₂ expt with Naked Eye view of Galactic Center overhead: No noticeable difference.)

08-05

14709 AM concluded. in last night's 101 globular marathon.. It was decided that 100 of the globulars had been seen with the 22" Starmaster telescope in the Akiyama Observatory and that I had added to that IC 4499 which was too low in the S. for their observatory wall. (They had to observe one G.C. by opening the DOOR of the observatory just like in the comic books!). Tonight, Lance Bernard, and Simon all looked at IC 4499 through Minerva - they happened to come by just as I was finishing my experiment and made their notes on it.

NGC 613 10.1 6.3 Sculptor Spiral Gal with bright knots. Wow! Beautiful.

* NGC 1448 10.7 7.4! (To find this one in Minerva! Horologium Edge-on galaxy. Lovely. It appeared at the very edge of the field. When I brought it to the center it was a lovely, faint string of fuzzy light.

NGC 1866 9.8 4.7 OC in the LMC. Last night, somehow by using Archmaras as an alignment * too close to the pole, the encoders missed this one. Tonight I used better *s and the system identified this small, diffuse open cluster.

IC 2177 ? 110 Monoceros Reflection Neb. Long and beautiful, cutting across field beneath an OC. like stranded rope..

*14710AV Thursday, September, 2005/1845-06157
Alajpancha Observatory grounds,
Zuca Utama Hotel, Lake Titicaca,
Bolivia/ Iran, Sid, Lane, Bernard,
Simon, and others, including a waiter
who came out in the frigid dawn air and
pointed out Mars! / Minerva, 810" Made, oth

Tonight was far smoother than
last night so there is less to write
about. I did a final O₂ experiment
this time on M33. Possibly because
it is over the hotel with its heat, M33
was no more visible than from Janner,
even with oxygen. Neither was M31.
That was a surprise.

M42 through Minerva is WONDERFUL!
The colors - red and blue, through both
the 20" & the 9mm, were not just subtle
but obvious. Splendid and magni-
ficent. Any more superlatives would
be superfluous.

CM35: 6.7^h W, Sand E. Emphasis
on far & southern regions predawn
not previously covered.

CM3c: NGC ~~770~~^m Bochum II, another
cluster embedded within the η Carinae.

*NGC 5643. 10.0 4.5, Lupus round gal
~~NGC 1516~~ Semicircle of stars, very ~~various~~
and even. RA 15^h 16^m - 67.8^s

^{last night} NGC 1566 9.7 8.2 Dorado Sp. Gal, structure
NGC 1617 10.4 4.2 Dorado E.G, brt. core
NGC 2025 10.9 18 M33a.OC in LMC.

09-05

S
14711AN

Friday, September 2 | 1715 to 0630 | 10+/
 Alajcincha Observatory Grounds Inca
 Utama Hotel, Lake Titicaca, Bolivia
 Ivan, Lance, Sid, Bernie, Simon, Manuel/
 Several telescopes and cameras.

This session began with my redoing the
 fishing line so that it comes around a
 key ring with smooth sides and returns
 to the reel, giving a mechanical advantage
 of 2. It was a good plan for now, Murrua
 goes in altitude far more smoothly
 CN3S 8h with Murrua SW, S, and E.
 with 9mm except for 20mm
 early in evening.

NGC 1333 (at 47.5°)

NGC 6362 7.5 10 Ara GC highly red.

NGC 6744 8.3 18 Pavo Round gal
 with bright core

NGC 6101 9.2 10 Apus GC.

As I was walking down the steps from the
 dining room I tripped on the last stair. My
 ankle is swollen but not very painful.
 Meanwhile, all evening Sid took some
 600 10-sec exposures in various filters
 of Barnard 263, see 14707AN.

The sky was not quite as crisp as on previous
 nights but it was still very good. The
 Geyers chain - overhead - was wider than
 I have ever seen it.

14712E. Saturday September 3, 2005/10+. windy at first, then suddenly ~1030 wind stopped and we had a very clear, calm sky / Simon + Chae Min, Sid, Bernie, Ivan, + Lance / Alaypancha Observatory grounds, Inca Utama Hotel, B. Lake Titicaca, Bolivia / Mizuza, 10", others /

We identified once again Proxima Centauri from its β \odot . Everyone got a look at the Sun's faint neighbor.

CN3s 4^h W, 2 S, and high in the sky.
CN3c M D
NGC 5189 69.9 ~~100~~ ¹⁰⁰ Musca PL Nebula
X Trif - very red variable at 1515 - 79.

NGC 6300 10.2 4.2 Area low surf. br. large

~~last night~~ NGC 6744. 8.3 19 Pavo Round gal brt. core

IC 5267, 610.5 5.0 Grus Round gal brt. core
Session lasted from 1900 to 0230.

14713E Monday, Sept 5/2000-2315/3/Jarnac /
Wendee + Dean / De coupling of Oberrial.

14714E Tuesday, September 6/1900 - 2330 very
intermittent / Wendee.

14715E Wednesday, September 7/2300 - 2315/
2/Jarnac.

14716E Thursday, September 8/2300 - 2330 / 1/
Jarnac.

09-05

*147175 Friday, Sept 9/1000 to 1450/3/Jamaica/
Mantaka/Wendee. SS2 1 big group 2 spots.
Dean called me ~ 10 saying there was a
big flare on the Sun. Despite a cloud
from an approaching thunderstorm,
which never materialized, I saw &
photographed a bright white flare against
the reddish background. It slowly faded.

Then ~ noon, Bob Summerfield with a
report that the flare was back. Despite
more clouds, Wendee (who had returned
by now) and I saw a very complex
flare structure. Also photographed
it but it didn't come out so I went
out again and got an acceptable
picture.

14718A N2 1830 to 0500/3-10/Jamaica/Wendee,
Dean Koenig and Ray Tucker!
CN3F: after LOT of work, we finally
connected to my laptop, Clipper. We got
a very nice picture of the flares. Obv-
seah, lives!!
Then CN3d 2.1 to East.

14719 ES Sat 10/1630-1650/3/Jamaica/
GS2 with ^{radiation} ~~radiation~~ 19: 2 prominences
not flare but brighter parts around
spots in the.

14720 E2 2330-0000/10/Jamaica/walk.

14721E Sunday September 11 / 2300-2330 / 7-m /
Jarnac / walk.

14722M. Monday, Sept 12 / 0400-0530 / 3 / Jarnac
Miranda and Minerva / WENDEE call
out this session!
CN3 and CN3d 0h30m E. (5h)

14723M Tuesday, September 13 / 0400-0545,
10 / Jarnac / Haldun Minali / -CN3d and
with Minerva & Minerva 0.8 h E.
Clearer & darker than last night.

14724S Wed, September 14 / 1700-1730 / 10 / Star
Dean, Haldun & Gramze Minali / SS2 / 9
lots of paper spots on this single eye
near center of O. Bought 12mm Nagler
Minerva

*14725E 1830 to midnight / 7-m / Jarnac /
Special observing night for the Astronomical
Society of the Pacific / Wendee, Carter
Mac Smith, Thom Peck, Marilyn
Whitehouse and ~30 altogether - Tim the
Obsidian, Miranda, Apollo, and a
Dob belonging to Thom. Very successful
and happy evening.

14726M3 0400 to 0515 / 10 / Jarnac / Miranda,
Minerva, Obsidian / -Haldun & Gramze
AND Wendee! / CN3S with Minerva
0.5h East. 12mm Nagler: Wow!

09-05

147275. Thursday, SEPTEMBER 15/1200-1700int/10/Jarnac & 10/Jarnac/Wendee, Mary Lou Whitehouse & Terry Mann/SS2 with Minotaur-1, 35 plus 2 prominences.

14728 E2 1930 to 0000/7/Jarnac/Haldun & Gary, Bob Lenny, and Wendee/Photos of observatory, including Obadiah and Hyperion + Mercury, by Bob. New computer for Obadiah installed.

Saturday, September 17.

14729 EM. 2345-0100/7-m/Jarnac/Wendee, Haldun & Gary/-/-/Watching the Full Moon and the well-lit backyard, while listening to Beethoven's Sonata 11 in A, "Moonlight."

14730 AN. 2000 to 0500. 3/Jarnac, on Sept 20/3-2/Jarnac/-/Dean and I worked almost all night on CNBF Obadiah collimation & focus. We also photographed ~~a~~ the Castor cluster.

#14731 E. September 22/1900 to 2030/3/Jarnac/Wendee/We watched and photographed a successful Minotaur launch from Vandenberg Air Force Base. Saw it coming out of NW horizon, staging, being beautiful, & disappearing in the SW. One of the best launches we've seen.

14732M2. 0000 to 0200 / 7-mi. Jarnac /
With Clyde, Miranda, + Minerva g
imaged, then found visually NGC
1049 in the Fornax Dwarf Galaxy
500,000 ly away! Even in Miranda
+ even in Minerva w/ 4.8mm, even
with a gibbous C. NGC 663 too

14733S. 9/23 / 1530-1630 / fiberoptic repair. SS2 1:3, 1
14734E2 Sept 23 / 2330-0000 / walk with the
Beagle.

14735AN Sept 24 / 1915-0500 / 10 / Jarnac /
Wendee, Dean / - CN3F with Obadiah
All night alignment + focus.
CN3d and CN3 1.1 hours West, the
E predawn.
CN3k1-CN1 Area 369, Area 16.
CN3j. Krentz search.

14736S. Sun 25 / 00:12 noon-12:30 / 10 / Jarnac,
SS2 with Mintaka, 1:4, 2 p. 1 very large
prominence we photographed. Dean
told us about it; Wendee + g
photographed it

14737E2 1900-2010 / 10 / Jarnac / Minerva /
Wendee / CN3 0.5h West. Wendee + g
also experimented with fitting Minerva
for a solar filter. At about 19:20 I saw
two "stars" south of the Great Square
brighten, then fade. - 1 at max, 0 the
other one. ID uncertain.

10-05

14738E. Sept 27 / 1900 - 2055 / 10 / Jarmac
CN3 0.2^h

14739E. Sept 28 / 1900 - 0000 / 10 / Jarmac / CN3
0.3^h W.

14740S. September 29 / 1600 - 1630 / 10 / Jarmac / SS2 0.8.

*14741A12 1900 - 0530 / 10 / Jarmac / CN3 2^h, at
start in W, end in E. CN3F - Decun + J
worked on Obadiah. - 4th try.

14742S. Sept 30 / 1230 to 1300 / 10 / Jarmac / SS2 0.

14743 E2 1900 - 2000 / 10 / Jarmac / CN3 @ ^{0.3}~~0.5~~ W.

14744M2 0340 - 0520 / 10⁺ / Jarmac / CN3 0.5^h E.

14745S October 2 / 3 / Madrid / site selection.

14746E2. 2200 - 2230 / site for eclipse.

*14747M3. October 3 / 0610 to 0630 / 5 / Madrid /
IT'S CLEAR.

**14748S. October 3 / 0800 to 1330 / 7- / Madrid.
Annular Eclipse of the Sun. Beginning
this morning, Fernando Santos and I
visited a Madrid City Park where, in
front of a beautiful lake, many people
were setting up telescopes, including

ANNULAR ECLIPSE of the S

14748S - conc'd.

70 forme.

one very expensive telescope with a
expensive telescope on the counter.
We then returned, via the Madrid
railway station that had been for
about 18 months ago. At the hotel,
Wendee had already brought Minerva
to the roof & I set up Minerva and
her personal solar telescope. The trip
still hasn't arrived so last night,
I arranged to mount the pot on
the underside of Minerva, then turn
her upside down! It worked!

First contact was at around
9:40 We had Fernando and his father
Greg and Denise Shange, Wendee,
and soon a big crowd from the hotel.
As annularity occurred, the temperature
fell sharply & the light level dropped
in Madrid, the first time since 1704.
That was the last annular here, a few
months before the opening of the Royal
Palace of Charles III.

Wendee saw a bright spot suddenly
appear shortly before annularity. It was
prominence! A plane or someone annu-
ced for everyone to go inside. We enjoyed
it. We loved annularity. Wendee
enjoyed it both with the PST (her prefer-
ence) and Minerva proper. Then 3rd
contact, & a relaxing session with
4th - and Wendee got ~30 sec. later
me since she watched to leave the chromo-

10-05.

14749S. Oct 4/1710-1800/7/Madrid/SS20. 10 prominences with Minerva's Hx telescope AND tripod which by now has arrived.

14750E2. 2000-2035/7/Madrid/Wendee, others/Venus over statue of horse + rider near Royal Palace.

*14756S. (# out of order). # 1300 to 1430/3/Barcelona - Spanish village. Sun photographed through crescent decoration. On Oct 12 1605, a total eclipse of the Sun passed through here - about 4 1/2 minutes of totality. Today I recreated the sense of that total eclipse. October 6, Barcelona.

14755S. October 8/1230-1300/3/U. of Az/ fire alarm break during my Project Astro talk.

14752E2 ~~2000~~ 1900-0000 int/7/Jarnac/Wendee, Scott + Roberts/CU3F - repaired Hyparson! Obadiah - he now talks with computer.

14753S. Oct 9/1200-1430/7/Les Cuesas/Xprize convention and visit to Patsy Tomborough.

14754EM2. 1800-0130/7-10/Jarnac/Hands on the Sun Star Party. About 40 attendees. Very successful. Wendee handled our home; Scott handled Obadiah. Miranda Russ Tamron handled 14 RCT. Apollo + Sarnesia also open.

14755S. October 10/0850-1155/10/Jarnac. SS2

14756S2 1450-1505/10/Jarnac/SS2 with Mintaka
0,3.

14757E3. 2000-0000/10/Jarnac/CN3; preparat

14758S. Oct 11/1000-1015/10/Jarnac/SS2.

*14759E2 Oct 11/1900-2100/10/Jarnac/CN3F
First set successfully taken with Obadur

14760M3 400-530/410/Jarnac/CN3 with
Miranda 14E. Photographed + confirmed
new cluster of asterism L384.

14761S. Oct 12/10-11/10/Jarnac/SS2 with Mintaka

14762E2 19-21/3/3/CN3; preparation.

14763M3 01-0420/0/J/closed J1 + J3 - doing

14764M4 515-535/3/Jarnac/CN3 with Minerva
0.145. Also 1st photo of cluster Lany

14765S. Oct 13/1030-1100/3/3/SS2 with Mintaka
small prominence.

14766 see overleaf.

10-05

14767E2. 1830-0000 very intermittent / (Wendee)
gibbous C on Yom Kippur night. 3.

14768M3 0430-0545 / 3 / Jarmac / Minerva, Clyde /
CN3 0.7^hE. CN3j and picture of Levy 384.

14769E October 15 / 2300 to 2330 / 2 / Jarmac / weather
investigation for tomorrow's eclipse. A
stalled low over the E. Pacific is spreading
solid clouds over us.

14770E. October 16 / 1800-0000 int / 3 / Jarmac / all day
clouds are beginning to dissipate. By
midnight the sky was much better. Low
still to the west.

3. *14771M2 0400 to 0615 / 3 / Jarmac / Obadiah, Canon
binoculars, and Apollo. (Wendee) / Although
clouds to the west had thickened overnight,
there were plenty of clear spots through
which we could see this beautiful eclipse.
I photographed it through Obadiah and
(using Wendee's Canon) through Apollo.
The shadow near Tycho provided good
views of the rays. Although the shadow
was only ~2% umbra, a whole section
near the Tycho edge was dark. The
clouds provided magnificent views of
the Moon and eclipse plastered against
an active sky.
Saros 1: my 7th eclipse.

- 14772 ~~142~~ ~~142~~ October 17. 12300-0000 / 3 - Jarrnac.
Roof fell off 32 again. Walk with beagle.
- 14773S Oct 18 | 745-1000 / 3 | Jarrnac / SS 2 0, 10
- 14774S2 1300-1330 / 3 | Jarrnac / airing out of
32.
- 14775E3. 1850-1910 / 1 | Jarrnac / closing 32.
- 14776E4 2300-0000 / 3 | Jarrnac / 3 | Jarrnac /
- 14777E Oct 19 / 2000-0000 / 3 | Jarrnac / Tom
- 14778S. Oct 20 / 1000-1600 / 3 | Jarrnac / working
intermittently with Tom. CN3 bgh. tly person
- 14779E2 2100-0000 / 3, 2 | Jarrnac / CN3P. Dean and
Tom finish cooling down the chip, & at last
Obadiah is ready for business.
- 14780S October 21 / 1600-1630 / 7 / 5 tarizonal SS 2: 0, 1,
Tom, Dean. 3 prominences.
- 14780S2 1730-1800 / 10 | Jarrnac / 10 | Jarrnac / SS 2
0, 3. First light saw small PST on Corde
- 14782E13 0000-0100 / 7m | Jarrnac / CN3 with Samura
10m SW.
- 14783SP Oct 22 / 1600-1610 / 10 Socorro / SS2 with Capid.

10-05.

14784E2 2145-2205/8/ Resort, Albuquerque/Sky 3:
Summer, Mark + Nanette, Matthew, Wendee/
Summer and I tossed some nannas across the
sky. She asked me to identify the fuzzy light
in the NE. It was the Pleiades. Other stars
Summer asked me to identify were Capella,
Fomalhaut, + Aldebaran. Very memorable
experience.

14785E3 2215-0000/8/ Resort/CMP1 - Orionids: 0

14786E Oct 23/1930-1945/8/ Po. Nanette's home/
family session. I pointed out Venus.

14787E2 2300-0000/8/ Resort/Wendee/CMP1
Orionids: 1. Also Wendee + I gazed at
BCyg through Cupid.

14788 Oct 24/0930-1215/Sandia Preparatory School,
Albuquerque. View of Sun - SS2 O, 2 prom.
View of Moon through Cupid. Sun through
Cupid + 3 Coronado PSTs.

14789E2 1915-1935/17/ Abq Mexican restaurant/
Cupid - Sky 3: Curt + Morgan, and Wendee
+ Summer, Matt, Mark, + Nanette - all viewed
BCyg through Cupid.

14790E3 2010-2135/8/ Resort /CN3 with Cupid:
HW.

14772 #2 BE October 17. †2300-0000/3-Jarnac...
Roof fell off J2 again. Walk with bioghl

14773S Oct 18 | 745-1000/3 | Jarnac | SS2 0, 10

14774S2 1300-1330/3 | Jarnac | airing out
J2.

14775E3. 1850 † 1910/1 | Jarnac | closing J2.

14776E4 2300-0000/3 | Jarnac | 3 | Jarnac |

14777E Oct 19 | 2000-0000/3 | Jarnac | Tom

14778S Oct 20 | 1100-1600/3 | Jarnac | working
intermittently with Tom. CN3 bgl. Hyperac

14779E2 2100-0000/3, 2 | Jarnac | CN3F. Dean and
Tom finish cooling down the chip, † at least
Obadiah is ready for business.

14780S October 21 | 1600-1630/7 | Starizona | SS2: 0
Tom, Dean. 3 prominences.

*14780S2 1730-1800/10 | Jarnac | 10 | Jarnac | SS2:
0, 3. First light new small PST on Cora

14782E13 0000-0100/7m | Jarnac | CN3 with Samuel
10m SW.

14783SP Oct 22 | 1600-1610/10 | Socorro | SS2 with Cupid

10-05.

14784E2 2145-2205/8/Resort, Albuquerque/Sky 3:
Summer, Mark + Nanette, Matthew, Wendee/
Summer and I tossed some nannas across the
sky. She asked me to identify the fuzzy light
in the NE. It was the Pleiades. Other stars
Summer asked me to identify were Capella,
Fomalhaut, + Aldebaran. Very memorable
experience.

14785E3 2215-0000/8/Resort/CMP1 - Orionids: 0

14786E Oct 23/1930-1945/8/At Nanette's home/
family session. I pointed out Venus.

14787E2 2300-0000/8/Resort/Wendee CMP1
Orionids: 1. Also Wendee + I gazed at
BCyg through Cupid.

14788 Oct 24/0930-1215/Sandia Preparatory School,
Albuquerque. View of Sun - SS2 O, 2 prom.
View of Moon through Cupid. Sun through
Cupid + 3 Coronado PSTs.

14789E2 1915-1935-17/Abq Mexican restaurant/
Cupid - Sky 3: Curt + Morgan, and Wendee,
+ Summer, Matt, Mark, + Nanette - all viewed
BCyg through Cupid.

14790E3 2010-2135/8/Resort /CN3 with Cupid:
1 h.w.

14791E4 Oct 24/2300-2330/8/ Resort, Abq
CMP1: 1 bright Ormag Orionid

14792S Oct 25/1730-1800/7/Tombraugh house
Las Cruces | Wendee, Patay | Bright view
O through Cupid.

14793SE2 1830-1900/Sunset over Demming
Weak green flash.

14794E13 2330-0230/8/Jarmac | CMP1 Ormag
2 meteors. RD 24 W. Esther - 442.

14795S Oct 26/1600-1645/10/Jarmac/SS2 O, 3

14796E2 1900-2345/10/Jarmac | CN3F

14797S 1000-1600/10/Jarmac/Sky 3/ Mintak
SS2 O, 3p. Sharing the Sky meeting
Obadiah: Venus, C,

14798E2 Oct 27/1920-0000/10/Jarmac/Sky 3/
Green Witch crowd - Neil Parker + James
Wendee, and Anton - well known writers

14799S Oct 28/0845-0900/3/Tuccon/SS2 ↓ Test of
through clouds.

14800S2 10-1050/3/S Arizona/SS2 with Mine
O, 2 Mirava + Min/Echo PST. Dean + Tim

11-05

- 14801 E3 Oct 28/1845-2200/9/ Yucca Valley, Starry
Nights Festival/ CN3 30^m W. Sky 3, M15, M13.
with Minerva large crowd, Tim, others
Milky Way view.
- 14802 S Oct 29/1100-1600/7/ Yucca Valley, Starry
Nights / ~~ET~~ SS2 with Minerva + M/E PST
0.5 prom. Dozens of people! During this
session, Jales talked with the Nat. Council
of the RASC, which unanimously approved
the ASP-RASC collaboration with Sharing
the Sky. Successful test of PSI on Minerva.
- 14803 E2 Oct. 29/2030-2300/9-10(East)/ Starry
Nights/Sky 3 with Minerva. M36, D6 Cl,
NGC 663. CN3 0.5^h E.
- 14804 S. Oct 30/1730-1745/10/Jarman/SS2 0.5 pr.
- 14805 E2 2320-2350/10/Jarman/ LPO-1. Mars.
Beautiful view. Look at Syrtis Major by
Wendee + me.
- 14806 S. Oct 31/ 9.45-10.00/10/Jarman/SS2 0.4p Echo
- 14807 E2 1900-0000/10/Jarman/CN3F CMP/ 1 Taurid
LPO-1 Mars, Syrtis Major
- 14808 S Nov 1/1000-1430/3/Jarman/SS2 with Echo 0.3.
Meade Photographers all day with Wendee +
me. With 32 dome, Obadiah, Echo.

14809E2 1900-0000/3/Jarnac/CN3F Obadiah
Hyperion CCD malfunction; packed for shipment

14810S Nov 2/1655-1710/3/Jarnac/SS2 with Echo

14811E2 1900-0000/3/Jarnac/CN3F

14812EM Nov 3/1800-0030/10/Jarnac/CN3F, CN3K

14813M2 545-610/LPO1/Obadiah: Mars, Syrtis
CN3E TVCrv. Major. Saturn overhead. CN3F, CN3J, Kreutz

14814E Nov 4/1900-2250/10/CN3K11, CN3F, LPO
Mars, Syrtis Major + vicinity. Leo Envy
wrap program.

14815M2 M2 0415-0600/10/Jarnac/Wendee/CN3d
with Miranda. CN3 1^h E, CN3J Kreutz
CN3F. CMP-1. (Very distinct Taurid meteor
train from near the radiant (almost
overhead) to N. horizon, moved E over
~15 minutes.

14816S Nov 5/1220-1225/7-F/Sky 3/16" inspect

14817CE2 1650-2300/10/Lao Cruces - Jarnac/
sunset, again over Deming. LPO1 photo
of conjunction of Cto over mountain
in Lordsburg. CN3F, CN3K11 prep.

14818M3 0200-0540/10/Jarnac/CN3L 3h E
CN3J, CN3F. LPO1 Saturn overhead.
CMP1 6 meteors 4 Taurids, 1 Leonid sporadic,
1 Leonid early.

11-05

95 November 6/ 1530-1555/ 10/ Jarmac/ SS2 0, 3 pr.
with Cordelia.

20E2. November 6/ 2300-2340/ 3-Jarmac/walk
with the Beagle.

215. November 7/ 1215-1230/ 3-1/Jarmac/ SS2
with Echo 0, 3.

22EM2. 1940 to 0010/ 3/ Jarmac/ CN3F with
Obadiah. LPO-1, Mara.

235. November 8/ 1640 to 1700/ 3/ Jarmac
SS2 - Cordelia.

24E2 1900-0000 intermittent, int. or i. / 3/ Jarmac/
CN3F Obadiah

25MB/ 415-445/ 2/ Jarmac/ CN3F close. CN3K/ 1/
close because of clouds. CN3d planned
with Miranda but cancelled.

26E. November 9/ 2000-2300: / 3/ Jarmac/ CN3F
with Obadiah - Southern area 29 LE.

275. November 10/ 1245-1300/ 3/ Jarmac/
SS2 0, 3 with Echo.

28EM2. 2100 to 0130/ 3 - Jarmac/ CN3F/ Obadiah/
CN3K with Clyde.

11-05

14837S November 13/1130-1230/10/Jamaica/SS2 1:14,7 with
Muntaka, with Echo. 1 S/West walk with
Wendee + Beagle.

14838EM2. November 13/1900-0145/7-m/Jamaica/
CN3F, CN3K

14839SP November 14/0940 to 1000/10/Jamaica/
Discussion with Bob Denny with CN3K.
Closing bldg. J1.

14840S2 1700-1730/10/Jamaica/Muntaka - SS2 1:26,5p.

14841EM3 1830 to 0015/7m/Jamaica/CN3F, CN3K11,

14842S. November 15/0830-0910/10/Jamaica/SS2
with Muntaka 1:22,5. Prom. smaller than 14840.

14843EM2 2030 to 0030/7-Jamaica/CN3F, CN3K
First night with full sets on Clyde + Obadiah.
Mostly successful though windy. Clyde almost
perfect. There were no 's. Obadiah was
a bit late + low on 1st set.

14844M3 0545-0600/7m/Jamaica/windy.
Wendee woke me to close J1 for wind.
Saw Saturn through Obadiah.

14845S. 1715-1730/10/Jamaica/Cordelia: ~~2~~
• ① low. Small green flash. SS2 1, 11, Op.

14829M3. November 10/ 0315 to 0600/ 10-Jarnac/
CN3 with Miranda 1.6".

14830S. November 11/ 1515 to 1630/ 10/ vicinity of Jarnac
SS2 with Echo 0, 3. Walk west with
Wendee and the Beagle.

14831E2. 1800-2300/ 7m/ Jarnac/ CN3F with
Obadiah; CN3K with Clyde.

14832S. November 12/ 1500 to 1630/ 7/ Chez Emily /
SS2 with Minerva 6 prominences.

14833E2. November 12/ 1830 to 1900/ 7-m/ I-10.
We were on I-10 ~ 20mi w. of Tucson,
waiting for an accident to clear, wife
watched the sky from the middle of
I-10. Watched ζ , no meteors, Pegaseus
Andromeda region.

14834E P3. November 12/ 1945 to 1955/ ~~10~~ 7-m/ I/
Sterizona 1 ζ through scope + binoc. eyes
Rescued Mintaka's new solar prominence
scope.

14835EM4. November 12/ 2240-0130/ 7m/ Jarnac/
installing Minerva Prominence telescope
CN3F, CN3K.

14836M5. 425-545/ 10/ Jarnac/ CN3d with Alice
1h E.

14846EM. November 15/2300-0030/Jarzac/
LPO-1 with Obadiah. Mars.

14847S. November 17/0830-0930/10/Jarzac
SS2 1:16, 5.

14848ER. 1945-0100int/7m/Jarzac/CN3F, CN3
windy. No Leonids.

14849S. November 18/0845-0910/10/Jarzac
SS2 1:11, 2 Minitaka.

14850R 1050-1130 110/Jarzac SS2 1:25

14851S3 1530 to 1545/10/Jarzac/SS2 with
Cordelia 1:15, 2 prom.

14852S4 1615-1630/10/Jarzac/SS2 1:13, high
power but still fewer spots.

14853ES. 1845-2100/10/Jarzac/CN3d with
Miranda CN3d with Miranda 0.4^hW

14854M6 0000 to 0115/7m/Jarzac
CN3all - CN3F, CMPI 1 bright de
Leonid meteor. in N. Omay. 30° trail

14855S November 19/0845-9.50/10/
Jarzac SS 4 1:11; 2 prominent
On last night's CN3F data, Ob
diah captured a bright Leonid
not far from radiant.

11-05

14856S2. 1140-1200/10/Jarmac/SS2 5prominences
with Mintaka.

14857E3 1900-2245/10-7/Jarmac/CN3F CN3K11

14858M/ 0540 to 0600/LPO-1 The Moon. Windy.
Wendee woke me up to chase early.

14859S November 20/0900-1800int/10/Jarmac
SS2 with Mintaka 1,11,3. Several looks
through Obadiah with Vigils + Leventhals

14860E2 1830 to 2300/10/Jarmac/CN3 with
Minerva 0.7^hW. CN3F CN3K11

14861S Nov 21/920-1000/SS2 1:5, 1p with Mintaka

14862S2 1100-1500i/3/Jarmac

14863EM3 1830 -0045int/CN3 0.4^hW. CN3K11 CN3F

14864S. 11/22/600 to 1700/3/Jarmac/SS2

14865E²³ 1900-2200/3/Jarmac 1 just looking.

14866EM3 545-600/23/Jarmac/LPO/with Apollo: Moon.

14867EM/ ^{Nov 23.} 1830-0000int/2/Jarmac/CN3F, CN3K11

14868S 0830-0900/3/Jarmac/SS2 1:6,3.
with Mintaka. Close from last night.

14869E2 1830 to 2245/3/Jarnac/Moranda
0.3" CN3K1

14870S Nov-26/0745-0820/2/Jarnac/SS2
with Mintaka 1; 3,3 with Mintaka

14871S2 1840-1430 int /3/ Leventhal's home/
Cupid LPO-1 Moon at last crescent
SS2 1:2.

14872S3 1601630 /3/ windy - Jarnac/ J2 addlin
the intercom + fixing shutter.
Very windy now from west.

14873SE November 27/ 1300-0000 int /8/Jarnac/
Mintaka

14874S November 28/ 0830-0910/10/Jarnac/
SS2 with Mintaka.

14875E2 1900-0000/10/Jarnac/ CN3F, CN3K1

14876M3 Nov 29/0415-0620/10/Jarnac/
CN3d 1^h

14877EM Nov-30/2100-0100/10/Jarnac/ CN3K
CN3F. Wayne Rasing, Gene Turner, Jay
Guzman.

11-05
14878 M2. 0230 to 0615 / 10 / Jarnac / CN3d
3^h. 10^m comet hunting. CN3a CN3k11.

14879 M December 1, 2006 / 2:1900 - 0000 under m /
10 / Jarnac / CN3F. CN3k11.

14880 S. December 2 / 0930 - 1000 / 10 / Jarnac /
SS2: 3:48, 11 prominences.

14881 E2 Dec 2 / 2100 to 0000 / 10 / Jarnac / CN3k11,
CN3F.

14882 S. December 3 / 0850 to 0930 / 10 / Jarnac /
SS2 3:41, 3 prominences with Echo.

14883 SE2. 1700 to 0000 / 3 / - Jarnac Sky 2,
CN3F.

14884 M3 0415 to 0610 / 10 / Jarnac / CN3d CN3
1.20^h CN3F

14885 SE December 4 / 1930 - 2015 / 10 / Jarnac /
0.00 - CN3F

14886 M2 0415 to 0600 / 10 / Jarnac / CN3d 1.0^h.

Markarian's Chain but windy
I started photographing 4 minute
exposures but the wind was rapidly
getting stronger and stronger. So
all were failed. It also took a while
to center the field so that M84, 86, 87, &
88 were all in the field.

148 14887E Dec 5 / 1900-0000 / 10 / Jarnae /
CN3a with Cupid 30m. Table

14 14888M2 0540 to 0600 / 10 / Jarnae / CN3 0.3h
with Minerva.

14 14889E. Dec 6 / 1830 to 0000 int / 10 / Jarnae /
CN3a. Cupid 0.2h.

14 14890M2. 0415 to 0630 / 10 / Jarnae / CN3 /
1h with Minerva. CN3F.

Markarian's Chain 65.5 min.
Unlike the other morning, wind
stayed calm this time. It was easier
to center the image, and the night was
beautiful. The images show that
two galaxies near 86 are interacting.
Beautiful image, beautiful night.

14891S Dec 7 / 11-12 / 3 / Jarnae / SS2 / 2:5, 2
w. Minerva.

14892EM2 1900 to 0000 int / 3 - Jarnae / CN3F,

14893S December 8 / 8:40-9 / 3 / Jarnae /
SS2, 3:8, 2.

14894E2 1920 to 2200 / 3 / Jarnae / CN3F /
test session for Obadiah.

- 12-05
- 895M3. Dec. 8, 2005/0000-0100/3/Jarnac/
Walk with the Beagle.
- 896E. Dec 9, /1900-2000/7-m/Jarnac
CN3a. 20h. at JS.
- 897EM2. Dec 9/2345 to 0030/7m/Jarnac/
GN'CMP-1 Gemmids. Beautiful evening
- 14898M3 0415-0630/3/Jarnac/CN3d 1.2h
- 14899E. December 10/1115-1235/3/Jarnac/CN3d
SS2 2:5, 7 prominent ee.
- 14900EM2. 2315-0100/2/Jarnac) included a
walk with the Beagle.
- 14901E. December 11/2315-0035/2 Jarnac /The
Beagle
- 14902EM December 12/2310-0250/1/Jarnac/
The Beagle. Walk along road, Acadia at
Jarnac memorize.
- 14903E. December 13/2100-2310/490-1 halo.
- 14904S. December 14/1545-1610/3/Jarnac/
SS2 with Echo 2:8, 1.
- 14905E2 2300-0000/1/Jarnac/walk with The
Beagle.

14906S. December 15/1500-1530/2/Jarnae/
SS2 2, 8, 2 with Echo.

14907EM2 2300-0300/2/Jarnae/Moon.

14908S Dec 16/0940-1000/10/Jarnae/SS2 2:4,5
with Muntaka.

14909S2 1700 to 2200/10/1700 to 2200/10/
Jarnae/SS2 2:2, 1 prom. with Cordelia.

14910EM3 2100-0500/10, 7/Jarnae/CMP-1, CN34
planning, CN3F, No Gemini. Prep. software for Fla
Wendee F. moved Floire from car to S. of observatory.

14911S 12/17/1030-1300/3/J/SS2 2:4, 5-1 big towering prom. w. Muntaka.

14912SAN2 December 17/1400-0715/Jarnae.
Fortieth anniversary of the start of
my comet search.

(1) Book signing at Starizona.
This was the coming-out party for
my new book *Deep Sky Objects: The best and brightest from 4 years of comet hunting* (actually comet chasing). I showed the inaugural debut of *Moonlight* from my obs session of October 4 to 27, 1997. It was near the shore of the Miras Basin and it was exactly 2 years before Ali's birthday. "So she was *Miras 2*" Wendee said.

14912 cont.

12-05

- 2) After breakfasting, a lovely sunset in a cloudy sky, brilliant colors.
- 3) After dinner, the Moon's light appeared through clouds, sky started to clear.
- 4) Pleasant evening, with Wendee setting up. Sky continued to clear.
- 5) Dean arrived around 11:30 and we finally completed what Wendee and I had started last night. Then we lifted our new telescope out of the ~~observed~~ back seat of the car and managed to take it to the South end of the observatory before we said enough is enough. Dean + I moved Flaire, which had been left on the ground dressed like a home boy person asleep + covered with blankets, even with shoes! We mounted Flaire and set it up on its tripod.
- 6) After he left, having worked alone on Clyde, I prepared for the launch of CN3 40m and CN3n. At about 2:40 am these new parts of my comet hunt began. CN3n uses Esther, and the lens I bought from Tom, to do wide angle pictures. Tonight there was a complete set of images taken.
- 7) CN3F with Obadiah. In honor of Flaire, Obadiah photographed every Flair star in the AAUSO Chart Catalog four times. A.D. is the easiest to spot, being close to γ Leonis. None were in Flair mode.

14912 SAN 2 8) CN3 40m was harder. It was
concluded) difficult since the telescope, a
14" Meade SCT, was way out of coll-
imation. I finally figured out how
to remove the bolt that locks the
mirror for shipment, and focused it
best; I could on its first light target
the first object to shine through this
telescope - Jupiter. Then I did
some comet hunting:

CN3d + CN3m 40: 1.2 h E

CN3F: Flare stars, UVet, A.D. Leo,

CN3e TVCw

CN3n: Ethern

14913S. December 18 / 1200 to 1300 / 3 / Jarnac /

14914 E2 2330-0000 / 2 / Jarnac / walk with
the Beagle along road.

14915S December 19 / 15-16 / 3 / Jarnac / SS2, 2:5,
with Mintaka.

14916 E2 2000 to 2100 / 3 / Jarnac / observatory
chain broke as I was opening J3.

14917S / December 20 / 1500-1700 / 3 / Jarnac / SS2
3:19, 2 prominences.

14918 EM2 1900-0100 / 3 / Jarnac / CN3n, CN3F,
CN3kll. Connected Flare successfully to
computer.

12-05
14919S. December 21/9:30-1230/3/Jarnac/SS2 1:12,5
with Mintaka. Finally cleaned out the
observatory.

14920E2 1900-2300/3/Jarnac/CN3F.

14921EM. December 22: 2200-0100/3/Jarnac/
CN3m 0.5h E. CN3n CN3e.

14922S. December 23/1200-1300/3/Jarnac/2:5,4
with Echo.

14923E2 2300-midnight/CMP-1, Ursid shower.
One meteor E to S at end of session with the
Beagle. CN3

14924S. December 24/0800-0930/3/Jarnac/
SS2: 3:11, 3 with Mintaka. One small
but bright prominence, 2 fainter ones.
The prominence was prominent.

14925E2. 2000 to 0000/10/Jarnac/CN3F, CN3n
CN3e < 17.5

14926S. Christmas Day/10:00-12:30/under the
noonday Sun/Jarnac/SS2 3:17, 3.

14927EM2 1900-0440/3/Jarnac/CN3m 40-with
Flave 0.3h CN3n CN3F and CN3L 11
testing of Lohan & Paula's lens with ISI
camera. Unsuccessful so far.

1491
con 149285. Boxing Day / 1000-1120 / 3 / Jarnac /
SS2 3: 9, 6 with Edo. Second test of
Lothar & Paulay lens, still unsuccessful
decision to purchase a proper DS1 - Pent
Screw thread.

*14929E2 1830 to 2000 / 3 / Jarnac / CN3 .3
Photos taken of M42 rising over our
Dome.

14930E. December 27 / 2300-0000 / 3 / Jarnac /
CMP-1 No Uraids. Beagle Walk.

14931S December 28 / 1030-1100 / 3 / Jarnac /
SS2 3: 9, 6 with Muntaka / Wendee, G
+ Jay.

14932S2. 1730-1800 / 3 / San Carlos. Sunsi

14933E3 2100-2245 / 8 / San Carlos / Minerva
Collimation made it better. M42, NGC
and Saturn. lot Monocerotids seen by
Wendee! CMP-1.

14934S. Wendee's Birthday! / 1400-1630 / 3 /
San Carlos / SS2 with Minerva 2 prom-
inences. A cruise through San Carlos
Harbor area on Wendee's birthday.

14935E2 2145-2350 / 8-1 / San Carlos / Minerva
Saturn, M31, NGC 869-884, M42, Mars.
Wendee, Jay, Gene, + . on Wendee's
birthday,

36M3. Wendee's Birthday / 0510-0620 / 9/ - San Carlos / CN3 with Genevra 0.9h E and S. Saw γ Cen but not S. cross at horizon.
37S. December 30 / 0830 to 0900 / 9/ - San Carlos / SS2 with Gene's refractor 6 prom. I didn't see γ Cen this morning but with an unobstructed southern horizon, the Cross should be completely visible from here, along with α + β Cen + η Carinae.

4938E2. 1730-1800 / 3/ Jarnac. Beautiful sunset at end of trip, with eb- coloured clouds.

4939E2 2300 to 2330 / 3/ Jarnac / Walk w. Beagle.

4940E December 30. 2130-2230 / 2/ Jarnac and Steve Petersen's house. Rik + Dolores were there, along with Dean Kietelsen + others.

14941M2 0030 to 0100 / 3/ Jarnac / Planning for CN3L11 - Munnawbrook camera project with CN3L and CU11.

14942S. 2006 0101 / 10/5-1600.
HAPPY NEW YEAR!

2006.
3/ Jarnac / SS2 1: 2, 3. Echo.
Attempt to connect IBM to Miranda unsuccessful. Not the very best observing session - Dean fixed J3 roof. IBM replacement.

2006

*14943E2 January 1, 2006 / 2200-0000 / 3 /
Jarnac CN3F, CN3n, CN3k11, CN3e, 13.
Dean's roof job very successful.
I was only one to report this outburst.

14944S. January 2, 2006 / 1000-1100 / 3-
Jarnac / SS2 1:5, 6 with Muntaka.
Walk with the Beagle S of home.

14945E2 2150-0000 / 3 - Jarnac / CN3k11 kat.
CMP-1 Quadrantids. 0 meters through
clouds.

*14946M3 Jan. 2/3, 2006 / 0440-0700 / 3-2 / Jarnac
CN3m, 40 with Flaire 0.4^h E.
CN3k11, CN3F, CN3n, CN3e

Report of the experience of Session D.
*14946M3: none of these have, excellent experiences.
I did not set the alarm this morning.
The sky last evening was pretty cloudy.
But at 4:45 I woke up and noted that
a partial clearing had taken place.
So I went outdoors, opened up
J3 and started watching for
Quadrantids. They came quite
quickly, and after I had seen about
10 I decided to begin a comet search
with Flaire. I had already
started CN3F Obudiah, CN3k11 Chy
and CN3n Esther.

Just after I began visual comet
chasing, a bright -3 or -4 Quadrant

01-06

946M3
13.1 enclosed

appeared in the east, heading to the south.
It exploded, leaving a shower of sparks.
There were also 2 or 3 meteors from a
2nd radiant perhaps in S. Leo or Hydra.

Total count: 15 plus several more
picked up by the telescopes, particularly
Oladian.

I really feel good about this session
which marks an auspicious start to the
new year. But there was more of significance;
as the session went on I began to realize
how much I enjoy meteors as much as I
enjoy eclipses. I am already writing
a book on eclipses - why not write one
on meteors? It would be a fine
activity on this, the 50th anniversary
of my first meteor on July 4, 1956.

So I proposed the idea to Sky & Telescope
even before going to bed after the session
ended. The answer was iffy - finish
eclipses first - but they said it was
okay if I also proposed the book to
Cambridge University Press. Thus
in the afternoon I wrote a proposal
for a book with chapters on each
of the major meteor showers of the year.

If the proposal is accepted, it would
mean that my report of this session,
14946M3, would take a year to write. And
the # is reminiscent of the Gricobinid
meteor storm of 1946.

2006
14947E. January 3, 2006. 2230-2330/3/
Jarmac / CN3F CN3K11, CN3N, CN3E.

14948S January 4 / 1000-1100 / 10 / Jarmac /
SS2 1:3, 4.

14949SE2 1730 to 1750 / 10 / Jarmac / Sky 2 / green
flash.

14950E3. 2230 to midnight / 7 / Jarmac / CN3K11

14951E January 5 / 2230 to 2350 / 7 / Jarmac /
Ramat observing experiment with Clyde
& ACP successful.

14952S January 6 / 1700-1715 / 10 / Jarmac / 1 / prom-
inence with Echo.

14953E2. 2300 to midnight / ~~10~~^{7m} / Jarmac / ~~GNP~~
1 - ~~thru~~ walk with the Beagle.

14954E. January 7 / 2340 to 0030 /
2m / Jarmac. Walk with the Beagle.

14955S January 8 1100-1215 / 9 / Jarmac /
SS2 1:1, 5 prominences. Walk with
Wendee & the Beagle, South. Complex
of prominences.

14956E2. 1830-0100 int. / 7m / Jarmac /
CN3F.

01-06

14957B. January 9, 2006 / 1600-1700 / 7m / Jarnac
SS2 1:2, 2 with Cordelia. I was taking
Cordelia apart to use it on Samwise.

14958EM2 1900-0245. / 7m / Jarnac Test of CCD
+ Cordelia with Samwise. Cordelia too
heavy, so returned to its former use as a
reflex telescope. The DSLR will possibly
work, however, with Lotte + Paula's lens.
I spent a good portion of the night on
this "engineering" setup. But the increasing
winds made continuing impossible, so
I stopped. Wind is so hard to deal with.

CN3F CN3K11 CN3L test "

CN3e TV Corvi 13.5

Windy. CN3 through Flaire.
Preparation of Samwise for CN3K11 photog-
raphy.

14959S January 10, 2006. / 1915-1700. / 7 / Jarnac /
SS2 1:2, 2 with Cordelia. Completion of
preparation of Samwise for CN3K11 photography.

14960AN2. 1915 to 0645 / 7 / Jarnac / CN3b
CN3e TV Cor 13.5 CN3K11.

14961S 2006 01 11 / 1100-1145 / 7 / Jarnac / SS2 1:2, 2
with Mintaka.

14962EM2 2230-0100 / 7m / Jarnac / walk with
Beagle.

14963S. January 12 / 0930-1000 / 7 / Jarnac / SS2 1:2, 2.

14964E-M2 2300-0015 7m Jarnac / CN3F, CN3H, CN3n, and CN3e TV Cir 13.8

14965S January 13 / 0930 to 1000 / 7m / Jarnac / SS2 1:2, 4 with Muntaka.

14966E-M2 1800-0100:17-11 Jarnac / Wendee saw the rising full C, then clouded over. Intermittent session.

14967E. ^{Jan 14} 2000-2100 / 7 / Miami / using the rising C, Wendee and I negotiated from being lost to finding our hotel.

14968S. January 15 / 1400-1520 / 7 / Cape Florida State Park / CN5 Sun Ven with ~~sun~~ lighthouse used to block out of Sun.

14969SE January 16 / 1845-2030 / 7 / Miami / Brian Kushner wedding. As we walked toward the wedding place outside the hotel, we looked out over the ocean and I saw a meteor.

The Moon rose - a waning gibbous Moon - so that it was directly to the left of the Chupah. What a beautiful wedding arrangement. We miss Johnny.

01-06
14970SE January 16 2006/1745-1800/3-1/south of
Kennedy Space Center/Sunset and beautiful
orange-red cirrus clouds, horseshoe cirrus.

14971E2 2245-2300/3/Titusville, Florida/binoculars/
CN3L preparation. Moon and M42, Auriga.

14972S January 17/1000-1530/3-F/Kennedy Space
Center/binoculars/New Horizons mission
scrubbed after 2 hrs due to high winds. CN3L prep.

14973E2 2330-midnight/3/Titusville/CN3L-11
preparation. Using binocs with new battery.

14974S. January 19, 2006/1000-1600/3/Kennedy
Space Center/binoculars/CN3L launch
in the State where Paula lived from 1978
until her death two years ago. Wendee & I
were very honored that she gave us; in her will,
the camera that gave Lathan so much
pleasure. I thought it appropriate to
begin CN3L with his lens, on this day.
At exactly the same instant, Wendee and
I witnessed the beginning of Clyde Tom-
baugh's final journey to Pluto, as we
knew - and precious few others did - that
some of Clyde's ashes were about the
spacecraft as it *Catharsis* soared
into the heavens. Oh dear - Hail to
Clyde, and to Lathan and Paula, and
Harvill.

14974 Score'd. Like 2 days ago, we enjoyed a wait through delay after delay, as for not wind but low clouds - broken clouds, delayed the launch. But this time, broken briefly turned to scattered, and the final go was issued for a 2pm launch. Good thing - as we waited before the clouds thickened, I changed our plane reservations. The lady at American was very excited to hear the countdown as I made the reservations.

14975 January 20 / 1900-2300 / 3 / Jarmac / Sunrise / CN3K11 test of camera - pics taken of M31. Lathar and Paula's Minnowbrook camera test.

14976 January 21 / 0815 to 0900 / CN3K11 camera test before sending film off to the processor.

14977 1500-1600 - / 10 / Jarmac / SS2 1:1,1.

14978 EM3 1815-0100 int / 10-7 / Jarmac / CN3F, CN3K11, CN3n, CN3F. CN3e TVCw.

14979 January 22 / 0900 to 0930 / 10 / Jarmac - SS2 1:25,3. one big prominence complex.

14980 EM2 1830 to 0030 int / 10 / Jarmac / CN3 CN3K11, CN3n, CN3e TVCw.

01-06

14981S. January the 23/ 0825 to 0908/ 3/ Jarnac/
SS2 1:13, 7 with Mintaka.

14982E2. 1900-2100/ 3/ Jarnac

14983S. January 24/ 0900-1700 unit/ 3/ Jarnac/
CN3t maintenance with Tom & Wendee.
~~Wireless instead.~~

14984E3. 2000-0000/ 3/ Jarnac/ CN3t/ windy.

14985S. January the 25th/ 1000-1700 unit/ 3/
Jarnac/ CN3t CN3L11 and CN3d
computer maintenance + upgrading to
wireless reception. ~~Wireless instead!~~
~~works.~~

14986E2 1900-0000/ 3/ Jarnac/ CN3t.

14987EM/ Jan 26/ 2030-0200/ 3/ Jarnac/
3/ Jarnac. CN3d, CN3L11, CN3m 40.
Now the wireless on Minerva & A. Samwise
works. Scott & Tucker aligned Flare.

14988S. Jan 27/ 0830 to 0850/ 3/ Jarnac/ SS2
1:4, 2. with Mintaka.

14989EM2. 2300-0300/ 10/ Jarnac/ CN3F, CN3K11,
CN3e. Wendee, Brent Archinal.

14990S. Jan 28/ 0850 to 0930/ 10/ Jarnac/
SS2 0, 2 with Mintaka.

14991EM2. 2320-0040/3/Jarnac/3/Jarnac/
CN3F CN3R11, CN3n, CN3e.

14992S. Jan 29/900-11:00/3/SS2 0, 2 prominences
with Minitaka. Columbus in 1492.

14993EM2 2230 to ⁰⁰²⁰2345/3/Jarnac/CN3F,
CN3R11, CN3n, CN3e.

14994M3 0450-0600/10/Jarnac/CN3F CN3R11, CN3n,
CN3e. CN3t. Tom took a color photograph
of Levy 384. Stars in 2 colors. CN3/15E

14995SE Jan 30/1700-1900/10/Jarnac/SS2 with
Cordelia. Flare camera photographed
this thin crescent Moon.

14996EM2. 2230-2345/10/Jarnac/CN3F,
CN3R11, CN3t, CN3e.

14997M3 0455-0635/10/Jarnac/CN3d/1h,
total now 1090.6h. CN3F, CN3R11, CN3n,
CN3e. CN3d 1.1 hours.

14998S Jan 31/1730-1800/10/Jarnac/SS2
0, 2 prominences with Cordelia

14999E2 1930 to 2000 on January the
31, 2006/3/Jarnac/LPD-1/picture of
crescent Moon through clouds with
Flare camera.

02-06

*15000EM3 2330 to 0140 / 2330-0140 / 3 / Jarnac /
CN3s with Peter Geddie. He photographed
M44, M42, and M79 through Clyde in
our first remote test of CN3s's remote
observing program with ~~an~~ RASC and ASP.
CN3F - J Wendee scanned some images
from tonight's session.
CN3k11, CN3t, CN3e.
Also used 7x50b; and Sapphire to see
Serrus. binocs saw M42, Corona Borealis.

15001 S. 915-1000 February 1 / 3 / Jarnac /
SS2 O, 2 prominences with Muntaka.

15002 E2 1845-2000 / 7m / Jarnac / 1845-2000 /
CN3F, CN3k11, CN3n, CN3t.

15003 E3 2300 to midnight / 10 / Jarnac /
CN3t, CN3F, CN3k11, CN3n, CN3e.

15004 M4. 0445 to 0630 / 10+ / Jarnac / CN3d.
1.15 E, total 1092.8 hours. CN3F CN3k11,
CN3t, and CN3e.

15005 S. February the 2. / 1030 to 1130 / 3 / Jarnac /
SS2 Q2. An amazing prominence, photo
with Flair camera. Thank you Dean.

15006 E2. 1940-2000 / 3 / Jarnac. Brief session
with guests from Starizona.

15007 EM3. 2300-0130 / 3 / Jarnac / CN3k11, Walk with
Beagle. Tripped and fell near Starizona pad.

20-20
15008M4 0540 to 0610 / 3 / Jarnac / CN3d 0.4h
E, 1093.2h total.

15009S. February 3 / 1230 to 1715 / 3 / Jarnac /
SS2 0, 2 with Cordelia. Major work on 52
dome. Fun with Kristi, Norm, Connie W.

15010E2 2330 to midnight / 3 / Jarnac / CN3F. 0.13e.

15011S. February 4, 2006, the 100th anniv-
ersary of Clyde's birth / 0930-1200 /
3 / Jarnac / SS2 0, 2 with Muntaka.

*15012SEM2 1500 to 0130 / 3 / Jarnac / SS2, Sky 3
Project Astro. Many people, ~50 here
all session long. Wendee, the Kabases, the Pecks all helped. In the observatory
Miranda, Apollo, Gladial, Esther,
Flouire, and Clyde were all active.
Good session.

15013S. Sunday Feb-5 / 1000-1100 / 3-1
Jarnac / SS2 0, 2 with Muntaka.

15014E2 1235-1530 / 3 / Jarnac / Sky 3,
Interview with Kris K + Anita Berkow

*15015M3 0030 to 0230 / 3 / Jarnac / Saros-1
with Miranda and Gladial / Wendee
and I did a successful observation of
a lunar occultation of Alcaeus in
the Pleiades. The Moon was very low,

02-06

1501543 conc'd. just a little above the NW horizon.
Wendee looked through Miranda main telescope
while I looked through the 8" on the top.
We both admired the pretty cirrus clouds
as they passed over C, and we both saw
the sudden disappearance of Alcayne
behind the C. One of the 3 stars nearby
vanished a minute or so earlier but the
clouds didn't let us see that. But we were
successful in observing Alcayne.

150165. Feb-6/0745-0800/7/Jarnac/Wendee/
Wendee's binoculars.

1501712 000-0130/7-m/SIUC/Moon.

150181. 0030-0100/3-m/SIUC/Moon.

150191. 0000-0020/3-m/Jarnac/Moon.

150201 0000-0030/3/Jarnac/walk with the
Beagle.

15021EM. 2330-0100/3m/Jarnac/CN3F, CN3KII,
CN3n, CN3e

15022S 0945-1000/3/Jarnac/SS2 O, 1 promin.
One very big prominence.

15023S2. 1500 → 1/3/Starizona/SS2 2 prom,

15024EM3 2300-0200/3/Jarnac/CN3F, CN3KII, CN3e,

15025S 0950-1200 / SS2 Q2. S. Prominence
separated from Sun, large and beautiful.
Later, horsetail cirrus. Pictures of
prominence + of clouds.

15026E2. 1900-2000 / 3 / Jarnac / CN3 / ~~10~~ 0.1 W.

15027E3 2245-2300 / 3 / Jarnac / With Wanda
and the Beagle; fell again but again,
no injury, just possible pulled chest muscle.

15028E 2000-2130 / 3 / Albuquerque, chez
Vigilo / Shakespeare / Mark and I
looked at Saturn and experimented
with Shakespeare.

15029S. 1430-1545 / 3 / Lap Guces,
chez Tombrugh / photos of Wanda,
Annette, Patsy, + Mom in front of
Clyde's 16" Telescope.

15030E2 2000-0000i / 3 / Jarnac / CN3F,
CN3k11.

15031S. 0945-1000 / 3 / Jarnac / SS2 Q, 6
with Mintaka! One prominence ~~top~~
separated from Sun's disk.

15032E2 / 2000 to 0000int / 3, 2 / CN3F, CN3k11,
CN3e.

02-06

150333. 0935-1000/SS 2 O, 1 with Muntaka.
Mom, Ed, + Wendee came out to view the
prominence. Ed had some good suggestions
alone.

15034EM2. 2300-0015/10/Jarnac/CN3F, CN3K11,
CN3e. Richard saw Saturn, beautiful
view overhead through Obusiah.

150355. 1220-1335/10/Jarnac/SS 2 O, 2
with Muntaka.

15036 E 1900-0000/10/Jarnac/CN3L11 with Flare
pics of M42 etc. and vicinity.

15037RS 1000-1200/3/SS 2 O, 1 with Muntaka.

15038E2 1900-0000/3/Jarnac/CN3F, CN3K11,
CN3e

15039S 1600-1800/3/Jarnac/Ken Graun,
Richard.

15040EM2 1955-0230/3/Jarnac/CN3L11
Richard, Ken Graun + group. R. Messier
Marathon appears to be successful
despite clouds.

15041S Sunday 10900-1000/3/1/Jarnac)
shutdown.

15042S2 1455-1510/3/Jarnac/O, 5 pr. with Coroblia.
One very big prominence; Richard saw it.

15043E3 2300-0200/3/Jarnac.

15044S 2/28/1130-1230/3/ISS2 with Muntaka.)
One very big prominence; Richard
Sawit.

15045EM2 2/00-0/00/3/Jarnac/CN3F, CN3K11,
CN3e.

15046E March 1, 2006/ 2030 to midnight/
CN3F, CN3e, CN3L11 with Fleig and
Lothart Paula's Minnowbrook Ave.

15047M2. 0450 to 0700/10-3/Jarnac/
Wendee/ CN3 0.6^hE. Comet P
photographed with Obadiah + spotted
during visual search AND identified
with Miranda's computer immedi-
ately upon sighting it. Good
development with visual search.
Wendee + I saw a very good earth-
shadow prior to sunrise + leaving
for the airport.

15048#S. March 2, 2006/1450 to 1630/2/
Muir Woods National Monument/comprom
with Sandi Billings on Sharing the Sky
Foundation.

15049EP March 3/2/30-2/40/3/ San Francisco
View of Moon + stars after rain.

03-06

50509 Saturday, March the 4/1330 - 1515 /
3 / Muir Woods National Monument / Flaire
the camera / Lonny + Todd. Pictures of
the great trees at Cathedral + Bohemian
groves at Muir Woods. These trees
are teachers. They offer a view of
timelessness, and of capturing the
moment and let it be lost for cent-
uries. And don't let the problems
of the day cost that vision.

50515^M 2. 1920-0200 int / T:1 Flight San Jose to Las
Vegas. They had said we were bound for
Burbank, but seeing Orion + Sirius out of
the right side of the plane showed we were
headed where we were supposed to be.

As Wendee drove to meet me in Tucson,
she got a beautiful view of the setting Moon.
"As I left the house, the crescent Moon was
hanging low in the western sky. It was so
golden, it looked like a slice of cantaloupe.
All I could do was glance between the road
and the Moon. I was really glad there was
no traffic. Then, at one point, the moon was
bisected by a mountain. It looked like a
black demon with two bright orange
horns. It was so eerie; it looked
like a demonic force, a horror movie,
(with ellipsis, quote from Wendee's Journal,
then from her own conversation.)
Then CN3F, CN3R.H, CN3e.

^{Sunday}
15052S. ~~Monday~~ Mar 5/9:30-11:00/3/Jarnac/
SS2. closed J7 J-1.

15053E2 2300-midnight- | 3/Jarnac

15054EM ~~Tues March 7/~~ Mon Mar 6/2300-0030/
walk with Beagle.

15055EM Tues March 7/ 2300-0200/3-2/Jarnac/
CN3k11 photos all night of Coma
Beranices. CN3e. Jupiter.

15056M3 06-0615/1/ Clouds. Closeup of J3.

15057S Wed Mar 8/1400-1500/3/Jarnac/
SS2 with Echo-G/prominence. Windy

15059E2 2200-0000/7m/Jarnac/ CN3e, CN3k11,
CN3F prep. Beagle walk.

15058M3 0430 to 0600/10, rapidly clouding
over/ CN3k11, CN3F. CN3d O. 7h E.

15060E. March 9/20:1800 to 2100/3/ Moon
with corona Wendea noticed.

*15061EM2. March 9, 1962. 2006. 2300
to 0115/2 | Jarnac/ Sharing the Sky
Launch. Our press release just announced
to 1500 people by AAS. First sighting.
Moon with pictures, + Jupiter. Moon
with Apollo; Jupiter naked eye. Walk
with the Beagle.

03-06

15062S. Friday, March 10 / 1100-1200 / 3 / windy / Jarmac /
SS2 0, 1 prominence.

15063S Sunday, March 11 / 6:30-7:15 / 0 / Jarmac / Flairé:
pictures of snow.

15064S2 1630-1745 / 10 / Jarmac / SS2 0, 2 with Echo.
Walk with the Beagle. Clear & Cold.

15065M3 0000-0100 / 7m / Jarmac / CN3F, CN3R11,
CN3e TV/Gw.

15066S March 13 / 1620-1700 / 10 / Jarmac /
SS2 with Cordelia and Echo / Wendee,
Scott Gensman / SS2 0, 7 prominences.

15067E2 2300-0006 / 7m / Jarmac / CN3F, CN3R11,
CN3e TV/Gw, walk with The Beagle.
☾ Full Moon (-less than a day) makes
sky quite bright.

15068S March 14, eclipse day / 0815 to 0845 /
10 / Jarmac / Muntaka 7- / SS2 0, 4 prom.

15069SE2. March 14 / 1500 to 1 /
Tucson Airport to Chicago airport /
binoculars plus Flairé Camera /
Eclipse # 72: Penumbral Eclipse of
the Moon - "Total Penumbral"
18:00 on plane - Sun getting low; Moon
of course still below the horizon.

15069SE2 ^{continued} cont'd.

18:11



3 am at over the wing;
plane heading NE; Moon
should be visible when it rises at
sunset.

18:30 ☉ getting low behind me.
Binocs + Flare are ready.

18:30:10 Moon UP!

18:34 Early pictures difficult
because of window angle, but
Eclipse on 2:00 edge is very
apparent even as Sun still up.

18:37 CST: ☉ still up, ☾ in penumbral
eclipse.

18:40 Binocs show beautiful
"dark shadow" visible across half
the Moon. ☉ shadow beginning
☉ has set.

18:56 Pictures of ☾ over city lights.
Angle of window decreases quality
of pictures. Through binoculars,
ecl. still faintly visible.

19:02 bin: ☾ ecl. still visible.

19:05 " still visible.

19:10 slight shading visible - bin.

03-06

15069SE2 concluded

19:16 sunsets: Questionable visibility of eclipse

19:20 Eclipse visibility over.

I then later photographed C over Chicago.
A very successful session.

15070E3 12200-2300/7m/Chicago/a lake near
the Extended Stay America hotel. Cold &
clear, bright Moon.

15071M March 15/0130 to 0200/2/New
Orleans, levee near where Grandma &
Grandpa used to live, and where I had a
special session in March of 1973. Sky 3.

15072S Mar 16/1300-1315/1/New Orleans
levee again. Sky 3.

15073SE Mar 17/1800-1930/3/Tangue Verde
School/Sky 3 evening presentation.

15074EM2 2000 to 0000/3/Jamae, KN3F,
CN3K11, CN3d 0.25h. CN3e TV Ov.

15075S Mar 18/1100-1430/3/Casa Grande
National Monument / Wendy and Lisa,
Emily, & David Leventhal. This was a
19th century observatory.

15076E2. 1930 to 2300 int | 3 | Jarnac |
CN3F, CN3e CN3d 0.25 h W.

15077S. March 19 | 1400-1830 | 0 | Jarnac |
Wendee, Kris Koenig | Snow. Work
on Dome. SS2 The Shoemaker-Levy
dome.

15078M2 2300-0100 | 3 | Jarnac |

15079M Mar 20 | Midnight to 0100 | 10 | Jarnac |
CN3K11, CN3F, CN3e.

15085S. Mar 21 | 0920-1000 | 10 | Jarnac |
SS2. 1:15 (faint but large group of
small spots. 1 filament, long,
AND 1 flair! Photographed
with Flaire.

15081E2 1920 to 0000 int | 2, 0 | Jarnac,
CN3K11, CN3d 0.1 h W. oblique later.

15082E Mar 22 | 2000 to 0000 int | 10 | Jarnac |
CN3F, CN3K11, CN3d 0.5 h West.

15083S. March 23 | 0815-0845 | 3 | Jarnac |
SS2 with Muntaka 0, 3 prom, 1 filament

15084M2 0030 to 0115 | 3 | Jarnac | CN3K11, CN3e

15085S. March 24 | 0900-0930 | 3 | Jarnac |
SS2 0, 3 with Muntaka.

03-06

15086E 2. ¹⁹ 2300 - midnight / 10-3 / Jarnac /
CN35 Kreutz search. CN3e TV Cw.

15087 S. Saturday, March 25 / 3 / Jarnac / GS 2
with Echo: O spots.

15088 E Monday, March 27 - Happy Birthday
Daddy / (#97) / 1900 to 2200 / Mykenas /
Wendee, Gail & Joanie, Peter & Dianne /
Sunset + see Sirius, Orion.

15089 E / Tuesday, March 28 / 2300 - 0030 / 10-3 /
aboard the M/V Ocean Monarch / Larry Gershon,
Mike Bakich, others / BIG Meteor.
-1.7, slow moving into S by Corvus.

000

15090 MS. Wednesday, Mar 29 (act. 28 then 29
according to this Journal's method of
recording sessions. 3, then 10 0530 to
1600.
Aboard M/V Ocean Monarch.

CN3 with Minarva 0.45 E.
Larry took pictures of me with Minarva,
then setting up for eclipse. Sun
just above horizon. Then Wendee
and I had breakfast then we
completed set up for the eclipse.
It is now 10am - 2 1/2 hours before
1st contact, a few cirrus but otherwise
a beautiful day.

③③③

15090MS
cont'd.

1130 Local Time 1 hour before
first contact. Some low clouds.

1140: Clouds moving off

11:51: SS2:

12:15 sky clear.

12:32 First contact through
Mimeria

12:53 Ship & bearing N, very slow.

This was the darkest eclipse I have
seen since 1970 (same series.) As the
shadow came in, Venus appeared
and was very bright.

I made many announcements
about the eclipse's progress.

A beautiful day to have an eclipse
 $28^{\circ} 36.998^{\circ} E$ position at
 $+34^{\circ} 38.11' N.$ turnaround
just after 1st etc.

"Thank you David, for bringing us
this beautiful day," one person said
"and for making these eclipse announce-
ments."

Partial eclipse like a sperm penetrating
the egg. (Dava, as reported by
Alfonso.)

03-06

1509045 About 1/2 way through, we had an
cont'd. episode of clouds appearing - low
cirrostratus clouds that covered almost
the whole sky - the Sun visible through-
out this period and we could follow
the progress of the eclipse. But it was
a cause for concern. The clouds formed
out of nowhere, but then after ~ 45 min,
started to dissipate.

- Clouds dissipate, light level dropping in the west.
- Wanda looks through telescope, Sun thinning.
- Shadows razor sharp. Toward west, horizon getting darker. 10 min before totality.
- Temp beginning to drop rapidly (dropped 16°F during eclipse; I learned after totality).
- Wanda: Looking carefully at \odot thru mylar, could see outline of \odot .
- Some reported: rotation of horns as we go in; we're not quite on center line.

15090MS

Peter: cloud bank not in yet, we might just see it!
- covering sunspots
- look at western horizon, notice changing color of darkening sky.

- dimmer switch effect. Darkness coming in waves.

13:40 Venus!

13:43 removed cover of Munerua - not using her until totality.

Color at edge of Moon through glasses

Planned order:

Wendee, Joanie, Crail Peter, Dianne
order of looking through Munerua

13:46 Dianne sees Venus.

Unique quality of light prior to totality.

Sky almost completely cloud free.

Crescent thinning + getting smaller in length.

Sharpness of ☉

TOTALITY! Ship's horn 3 black
Long, elongated corona along magnetic lines.

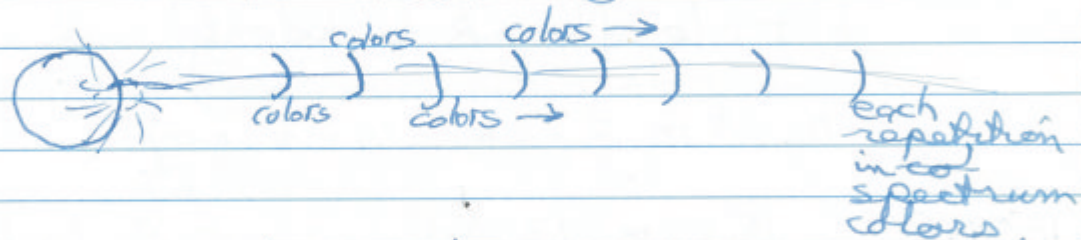
03-06

(15:00 MS. Structure in corona was intricate
conc'd.) + beautiful. Photo thru Minorwa,
then list of people looking through.

Then pictures with Flaire.
Peter: clouds in West not over us.
Glow. End of shadow coming toward
☉, then Diamond Ring

AND
with grating, diffraction grating,
I witnessed my first

FLASH SPECTRUM



15:56 3 min after 3rd contact.
clouds return rapidly.

This was an extraordinarily dark eclipse. It was as dark as the 1970 one was two decades ago. We enjoyed the experience of total eclipse with Venus so brightly there. The eclipse carries so much emotion with it - it is as much a human event as an astronomical one. After, Peter, Diane, Wanda, Crail & Joanie organized a glass to those who have traveled far to see, or miss, eclipses and transits.

15091SE March 30, 2006 / 1600 to 2100 / 1-2 /
Santorini Caldera - climb to top of
volcano, and pictures taken. Very young Moon.

15092E March 31, 2006 / 2030 to 2045 / 7 /
Athens / Moon + Parthenon. Photos of
Eli Moor taken for his new book on
Pythagoras.

*15093S. April 2, 2006 / 1600 to 1730 / 2-1 /
Jerusalem, Hebrew University
campus / Minerva / attempt at ☉
but cloud break lasted only a few
seconds. Minerva was photographed
next to Einstein's telescope.

15094E2 1830 to 2130 / 3 / Larry + Judy Bazzerman's
home, Jerusalem, Israel / Wende,
Echel Ophi / Minerva, binoculars,
Saturn, Creturus. A good look at
the sky with Minerva from Jerusalem.

15095E3 2300-2330 / 3 / The Hebrew University,
Jerusalem, Israel / walk at night
on campus. Sky partly cloudy,
Leo high in the sky.

15096E April 5 / 1900 to 2330 / 7 / Jarnac /
CN3j, CN3k11. CN3e
Sky clear but windy from west.

04-06

15097M2S 0330 to 0815 / 10-3 / Jarnac /
CN3d 0.8^h E, SE with Miranda.
CN3k11, CN3F.
Later, at end of session SS2.
with Echo, 2:2 + 3 prominences.

15098E April 9 / 2300 - midnight / 7 - Moon /
Walk with Beagle.

15099E April 10 / 2330 - 0030 / 7m / Full ☾
walk with the Beagle.

15100S April 11 / 0745 - 0815 / 3 / Echo / SS2
0; 2 prominences.

15101S2 1250 to 1315 / 3 / SS2 0, 2 prom.
Patsy + Wendee looked through Echo's
Sun telescope. I took pictures of
Echo + Clyde's 16-inch. Both telescopes
saw first light, in 1960. Actually,
Echo was used by Steven + Eric
earlier, but for me, 1960. And Clyde
finished his 16in 1960. Both scopes
are still in use. I wonder how many
scopes built in 2006 will still
be working in 2050?

15102E April 12 / 2000 - 2100 / 7-m / Albuquerque /
Summer, Matt, Nanette + Wendee looked
through Echo. May Echo inspire Thomas +
die to me. Moon, Saturn, Polaris, Mercury, M42.

I really enjoyed Summer's growing interest & she asked questions about Saturn's rings, & the Moon. Great session. Please see page after 15168E

151035. April 13 / 1100-noon / 7 / Georgia
O'Keefe School / Summer & her class,
Nanette, Matt, Wendee. SS2.
2 spots. 1 prominence. Spots viewed
with projection, prom. viewed later
for family & teacher Mrs. Fox.

15104E April 14 / 1100 pm to midnight / 7 /
full C walk with the Beagle.

15105E April 15 / ~~14~~ 1700 to 2315 / 10 / Jarnac /
Echo, Miranda, Clyde, Obadiah
SS2 2p, CN3 1^h W. Visit
from Blaine from Utah.

15106S April 16 / 1400 to 1600 / 10 / Jarnac /
Visit from the Andrews family &
Virgil - SS2 w Echo & with Mintaka
0, 1 tiny prominence.

15107E2 2000 to 0000 / 10-7 / Jarnac /
CN3d with Miranda 30m W. /
CN3ke, CN3fj Kreutz.

15108E Apr 17 / 21930 - midnight visit / CN3j
with Obadiah. Walk with Beagle.
Clear night -

0406

15109E April 18 / 1830 - midnight / 10 / Jarmac /
Sol 2 photograph. CN3; Comet SW 3.
CN3e

15110SE April 19 / 1530 - midnight / 10 / Jarmac /
SS2 0, 2p with Muntaka. CN3e.
CN3 6 min W. (0.1h) Two 11th mag
satellites crossed path and went in
right < directions 06 39.5 - 15 25
at 20.45.

15111S April 20 / 1830 - 2100 / 3 / Jarmac /
Sol 2 photos.

15112EM2 1945 - 0130 / 10 / Jarmac /
CN3; CN3F CN3W 1^hW. CMP1
7 meteors. CN3e TV Gr 18.5.

15113S April 21 / 9:10 - 10:30 / 2 / Jarmac /
SS2 0, 1p with Muntaka

15114E2 2320 - 0045 / 1 / Jarmac / Beagle
walk.

15115S April 22 / 11-1315 / 3 / Jarmac / SS2 0, 4
Muntaka / arc-shaped, very powerful. Wow.

15116S2 1845 - 1908 / 3 / Sol 2 green flash
photo at Jarmac. Trying to get
the green flash photo.

15117EM3 2300-0130/10/Jarnac/
CN3F CMP 2 meteors. CN3e. TVCw
2 meteors. Lyrids.

15118S April 23/0800-0830/10/Jarnac/
SS2 0,5 prominences. Arc-shaped
prominences still there but fainter,
new brighter thick one.

15119E2 2000-2100/10/Jarnac/
CNK11 setup. Wendee opened obs.
and set up Miranda + Clyde. She
found M42, 2 CMi, M42, 2 Boo + Myar
~~CMi~~

15120EM3. 2330-0130/10/Jarnac/
CN3L11, SW3 photos. CN3e.

15121S April 24/9-9:30/3/Jarnac SS2
0,4 Mintaka.

15122~~SB~~ 1500 - 1545/3/Jarnac/3/
4p with Mintaka.

15123E3 2000-0000/3/Jarnac/CN3d 1/6W
CN3e.

15124M4. 0255-0500/3/Jarnac/CMP1 - 1 Lyrid.
CN3d 1.3h. 1 possible η Aqr

15125~~B~~ April 25/1045-1100/3/Jarnac
SS2 with Mintaka 3, 23:11 prom.

04-06

15126E2 1945-2300/10/Jarnac/CN3 with
(CN3e) Apollo 0.3^h W. Noted 2nd faint gal near
TV Crw, easy with very good seeing

15127M3 0315-0500/10/Jarnac/CN3F,
CN3K1, CN3d 1.3^h E. Cmp 1
Ophiuchid - slow & bright. Music:
Haydn 61, clock symphony Beautiful, some 12

15128S April 26/1100-1230/10/Jarnac/
SS2 3, 23; 1p with Muntaka

15129E2 2000-2300/10/Jarnac/Sky 3.
CN3b 0.1^h W. CN3e.

15130M3 0320-0445/10/Jarnac/CN3F
CN3K1 CN3d 1.1^h E.

15131S 1045-1100/10/Jarnac/SS2 3:22, 1
with Muntaka. Strange prominence
visible only above photosphere; narrow
break between top of ph. & start of
prominence.

15132E2 2300 to 2345/2/Jarnac/Thursday, the
night before our Telescopes for Teleten

15133SE April 28/1650 On mainly cloudy
evenings, I still like just to check
on things - make sure the telescopes
are happy; maybe check Hyperscan
as well; maybe walk the Beagle.
The other evening, a reporter from
K&U interviewed me in the

(15132E2, cont'd.) main observatory. A pleasant experience. These are relaxing nights.

15133SE. Friday, April 28/1500 to 2330/3/
Jamaica, then the 5 Walmarks and
Starizona / Telescopes for Telethon.
Apollo was loaded into the car
as soon as we heard from Channel 9
at 3 that they wanted to cover
us for the 5:05, 5:15, 6:05 + 6:15
weather forecasts. Wendee + I
set up Apollo at the Walmart
parking lot on Kolb/Speedway
Apollo got into all 4 broadcast
with Jeff James. We then
went to Walmart on Grant
then the one near Tucson Mall
then to Starizona, then to
the one near Marana, + finally
to the one on Valencia, meeting
T4T - MDA and TAAIT people
all along the way. Once home,
I set up Clyde and Obadiah
for CN3e, CN3k11, + CN3F. ☺

15134
M2.

0315-0500/10/Jamaica/
Miranda, and Clyde + Obadiah/
CN3d 1^h E. CN3k11, CN3F,
Also keeping a watch for Eta Aps.
CMP-1.

15135
SE

04-06

Saturday, April 29, 1961. My Bar
Miyah. Today, 2006, though,
Telescopes for Teletthon, + I spent time
in J1 looking for the Pegasus you new
focuser. Then at 2:15 we left for
The University of Arizona. Once
in our spot on the math, Wendee helped
Twila + Liz set up the tent, while I
set up Apollo plus the H_d mounted
on it. SS2 earlier with Muntaka -

Then I found the
focuser in the car, + I went over to
Stargazers to bring it to Dean. He
had an MDA flag on his telescope!
Once back at UA, I showed people
the Sun with 2 small prominences
(earlier visited the display at the LPL
Sonnnett Bldg set up for T4T.)

Peak sunset - I replaced the H_d
with a finder. It was a very busy time.

Richard Dougall helped run
Apollo as I ran it, + made announce-
ments on George Barber's loudspea-
ker. Wendee + Toiley + Liz did a
magnificent job. Projected earn-
ings: \$7200.

Once home, set up the scopes for
tomorrow morning's predawn search.
Also did CN3e TV Sorvi.

03612

0315-0450/101J/CN3F CN3d/hE

151379. April 30/1500-1515/10/3/SS2 1:6, 3prom.
15138 with ~~Monte~~ Echo!

Sunday, April 30. /1900 to 0500/
7-10/ Jimmy Stewart's home, then
Jarnac. Jimmy has a beautiful
observatory attached to his home
11" Celestron on mount that raises
& lowers, & sliding roof & high
walls & has staircase that slides
beneath. We saw:

• 77 Geminorum

a Hogram!
(parallelogram) c • El Nath

Once home, set up Obadiah &
Clyde + Fluorid

CN3d 2.1h E

CN3e TVCw

CN3F E

CN3k II E

CN3L II. 5 stars, + 10

images with Fluorid &
Lothar and Paula's 80mm lens
of Comet 73P/Schwassman-
Wachmann 3c + 3b
They were successful, nice
composite image.

CMP-1

5139

S.

May 1/10-1030/10/Jamaica/SS2 2:12, 2
with Munitaka

05-06

5140E2.

2000 to midnight / prep for
observing cancelled for clouds, CN3e
plus Beagle walk

5141

May 2/3. 2000 to 0000/3/Jamaica
CN3n Successful search + photo
73P SW 3 b.c. (main fragment.)
CN3d 0.3" NE, from M13
found SW-3c easily, and
also came across SW 3 b.
all near M13.

5142

M2

0315 to 0500/3-1/Jamaica/Beagle
walk.

CMP-1. Eta Aquarid meteor
shower. Trying to capture telescopic
meteors near the radiant with
Obadiah, Clyde, + Esther. I
then set up Miranda:
CN3d 0.2" E

Total meteors: 6. 4 η Aquarids
and 2 sporadics, 1 through telescope
(Miranda).

5143

May 3/1100-1200/3/Jamaica/SS2 2, 7
+ 3 prominences. Wendee completed
J3 closure from last night.

15144E

Thursday

Friday May 4th / 2200 to 2300 / 4 | Morningmist 15144E
Wendee, Triple Nickel + Karen | Moon |
"Wow" - Saturn, Jupiter, Moon. "Wow!"
is a beautiful telescope. Absolutely
Special 8" f5.6

THIS WAS SUCH A SUPER NIGHT!
WE WERE SOOO TIRED BUT HEY -
THIS WAS ASTRONOMY & THAT COMES
FIRST! FOR ME -- SOMETHING I
WILL ALWAYS REMEMBER!

Triple Nickel
"555" 5⁴³

15144E

Monday, May 8 / 8pm - 10pm / Mission
Control or Space Center Houston! /
Wendee, Triple + Karen Nickel /
We touched the Moon rock on display
at SCH; Wendee + I had our
fingers on it, then we joined the
Meteoric wedding ring with the
Moon rock.

As we left the Center, the gibbous
Moon was high in the sky. We got
a group of students from one of
the experiments to point at it.
From touching the Moon

to
seeing the Moon.

This passion followed my talk there
"Reach for the Stars" - a standing
ovation.

05-06

51169

0945 to 1230 / Tuesday, May 9, 2006.
3.1 Ellington Field, over the Gulf of Mexico, & return / NASA reduced (Zero) Gravity mission. This was an extraordinary day. We arrived at the Ellington Field and had our morning meeting during which they explained some flight procedures. Then we had a break - I called Mom, + Nanette, + Wengee called Joanie and we then donned our flight suits, had our medical briefing and then our preflight briefing. We boarded just around 10, the engines lit, and we took off like a normal plane. As we headed out to the gulf we were allowed to leave our seats. So we joined it to our places, taped our cameras ~~and~~ to the floor, and waited -

5 minutes to first parabola! came the announcement. Then "30 seconds". Then the C9 made a strong upward lurch. We were not looking out the window, so the only evidence of abnormal flying was that ~~our~~ we were pressed to the floor as we reached 1.8g. We could barely move our hands. Then near the top of the parabola we felt our weight sharply drop and for a few seconds we almost felt floating but we weren't. Then it happened. We simply floated into the air. For the first

15146S (cont'd.) Time to see Nature as best, without gravity. Zero G and I feel fine. This is our first NASA mission (second if you count Friday's O_2 ~~demo~~ hypoxia demo to 25,000 feet).

I felt truly free. But then, so quickly, it was over and John announced "feet down". Earlier he had signalled the start of Zero g with "over the top." We fell down sharply and as we went down we felt the sharpness of 1.8g again.

It was almost impossible to move.

During the next 9 parabolas I made some videotaped announcements, one of generic announcement about zero g and how I felt.

"I have a strange feeling there will be no... food service on this flight.

But there were lots of staff, and a flight doctor. And Trip Nickel in the co-pilot's seat.

"I can't believe we're doing this old dog that we are" said Gretchen, one of the teacher fliers.

First Parabola: Wendee: "Omy God!"

Me: "The feeling of freedom!"

"What happens when one the primal forces of ~~gravity~~ Nature, gravity,

5146S (continued) 05-06
(concluded) is a paraway from us? "

Each parabola I tried something different. One, I tapped onto the data recorder and it ran away from me. I thought I lost it but it turned up quickly on the floor after the next parabola. Then I just placed it in the air in front of me and it just stayed there! It just did not move at all.

Wendee tried her experiment with her WAGIT - Wende's Anti-Gravity induction thrusters. Like hand paddles for swimming. The idea was to use them to try to control locomotion. It didn't work but it was great fun. During one of Triple's many calls to the staff to see how she was doing, he asked how the wagit experiment was going. Everyone had a good laugh at her attempt. There were 4 groups of 10 laps each, then # 41:

Yesterday we touched the Moon. Today we walked on it in $\frac{1}{6}$ lunar gravity. It was more like hopping. We could traverse large distances easily in this environment. Then, Mars: we walked - not hopped - far more easily than we could on Earth. These last two parabolas were

continued
concluded.

15145S perhaps the most memorable. In lunar gravity I felt as though I was on the surface of the world we saw last night! I imagined peering into places like mountains, craters, or the straight wall. I was walking ^(chopping) on the place for which I played Moonlight Sonata.

On Mars, I was strolling on the place of Dad's "Coke of Spyclass Mtn." - The world that could have been ours, and then, "it's a wrap!" We were done. For some of the paratroops I landed on a lifeline by accident - although that was fun. I cupidied that by careful aiming to the floor, which could have been at ANY \angle / top-sided angle at the end of each Zero G. Once we descended it was pretty much impossible to move off her - couldn't move any part of me without enormous difficulty.

And so, we headed back to Ellington and it was nice landing there to a group of people applauding us. It was the end of a magnificent ride.

I've been on planes so often in my life but nothing approached this experience. And neither of us got sick. Too much fun for that - Our NASA mission is done.

05-06

continued

51453

Wendee's report:

"As we left the building, Triple was hanging out of the cockpit window, like Snoopy and the Red Baron. When he saw us wave to him, he gave us the heartiest wave back. We turned our attention to the plane

"The photographers motioned us to walk a particular path so they could get boarding pictures. I hope my smile was a good one because I was the first one on! We found our seats and waited for the fun to start.

"Unlike regular commercial flights, we were still climbing when we were told we could leave our seats. David and I found the spot where our cameras were belted down and sat by them and waited for the fun to start. I laughed to myself at the irony of where we were, I didn't have much of a blank wall to look at because we were opposite the exit doors which had windows! I got to see the angle of the clouds as we climbed to the top of the parabola. It was amazing to feel the force of 2 G's. We felt like we were being pressed down into the floor of the plane. Once the G-force began to increase, it became progressively more difficult to move an arm or a leg. I know, because the first time, my ankles were crossed. I didn't

15145 (continued.) make that same mistake twice. I tried to reach for my camera and gave up. I could have retrieved it, but I didn't want to fight the force. The first time they said "This is as bad as it gets" which was a comfort. It was handleable.

15146 Then, I had a difficult time finding a focus point. From what they told us, I was afraid to truly look out the window. But Dominic, one of our instructors, was positioned in front of me. I stared at his knees.

"Now, we go 'over the top' of the parabola and we are going weightless for the first time. What an experience. I forgot to grab one of the straps on the side of the plane. Before I knew it I was headed for the experiments with no way to stop myself. God bless Dominic, he gently pushed me back and made sure I was upright when we got the 'feet down' command. Of course I was nowhere near a wall, so on the next zero G fall, I again floated like a bubble in space. I did get a charge out of using my feet on the roof of the plane. Dominic made sure I didn't hit anyone. Good man.

"Finally I was able to grab a strap. Now, I could roll and twist and stay out of everyone's way but David. ✓

05-06

51465-(continued.) The procedure was getting easier. Time to bring out the WAGITS. My first attempt, I tried to fight gravity or the lack of it, and scull enough to remain seated on the floor. It appeared to work at first, but before I knew it, Dominic was pushing me back again.

I don't know who's the more jealous - David or Triple. I was in contact with Dominic more than anyone else throughout the flight. At one point the velcro on my sleeve caught the velcro on his flight suit & I actually became wrapped around him. I whispered in his ear, "I'm stuck on you!"

"After about our 3rd parabola the first person to get sick got really sick. They reseated him and the flight M.D. [Dr. Fitzpatrick] stayed with him a long time. At one point I saw him get an injection. I knew in a small way how he felt because just before going weightless, I would feel a fringe of queasiness. But, I remembered John's words and all the instructions and was OK.

"What I did find interesting was that some "sets", and we did 4 sets of 10 [parabolas each set] (the final was 13) were easier than others. David shot pictures almost continuously and

15146 S - [concluded] even spoke for the camera. I just floated around and kept trying my WAGITs every so often. Each time Dominic would "put me" where I needed to be. All in all, it felt like a bonding experience - The reason we all had come. I loved making new friends short as our time together was.

"Just shy of 2 hours from take-off we were landing. David and I learned, after the fact, that the flight crew referred to us as [TPC] Triple's Precious Cargo. They were good to us.

"On the way off the plane, I was beaming the way, so my little smile & wave came front for the cameras. There was a group of women waiting to welcome us in. Some from staff & some from our group. I hugged them all like family. I was so relieved to be down. I think it was because I was down and not sick! Now all I wanted was a big cup of something carbonated. I barely mentioned David Triple was back with a can of Diet Coke. I don't think a soda tasted as good or went down as well as that one.

"Our day was actually still very young..."
So concludes Wende's account of this session.

15147 E

15148 G

15149 E2

15150 S

15151 SE

05-06

5147 E. Wednesday, May 10, 2006. 12000 to 0000 intermittent / 3 / Jarnac / CV3e, CV3K11. Wendee opened up and prepared Clyde for work very well and effectively.

5148 S. Thursday, May 11, 2006. 1020-1100 / 3 / Jarnac / SS2. with Mintaka. Wendee closed J3 and Clyde within.

5149 E2. 1945-2300 / 3 / Jarnac / CV3e, with Clyde. Wendee opened & closed Clyde & J3. Also, walk with the Beagle.

5150 S. Saturday, May 13, 2006 / 1330-1355 / 2 / 19-I Manitou Crescent, where I lived from 1977 to 1979, and nearby shopping plaza / Peter and Dianne / The Sun came out briefly for the first time and I was able to see its filtered image using Cupid. SS2 with Cupid: 0 spots.

5151 SEM Monday, May 15, 2006 / 1930 to ²¹⁵⁰ 0050 EDT; 2000 to 22:2150 MST / Adirondack Science Camp, Plattsburgh, and Jarnac / Wendee at Jarnac. I arrived at the camp about 1930 and set up Cupid underneath the Post Office porch in case there was drizzle. We had a few drops but generally no rain this evening. All was quiet in

1515/SEM (continued) This cloudy spot except for the sounds of a few peepers and other wildlife. I photographed a bird on the pond, then paced the full perimeter of the pond as the sky began to darken. It was pretty and peaceful and there was no wind. Other than occasional plane and '87-truck, the only sounds were the natural ones. I taped a Let's Talk Stars show of ~ 40 minutes; I reminisced about the pivotal role this place had in my decision to pursue astronomy with vigor & passion.

Meanwhile, as the sky darkened, the sounds of the throng of *Pseudocris crucifer* - the Spring Peepers, grew from rehearsal to a giant chorus. Although I couldn't see any, I heard where one was peeping every second or so & successfully got its picture, at least one. I read the following about them:

The *Pseudocris crucifer* is a Chorus frog; the size of a finger, with dorsal markings forming an X on its back. They are brown, grey, or green. They utter a single clear note or peep. Adult length is ~ 1".

1515/SE

05-06

SEM (continued). They have moderately webbed feet and disks on their fingers or toes. The males sing in pairs. The frog starting a sound has the deepest voice, though I couldn't identify that.

In Nova Scotia where Roy first introduced me to them in 1995 at Convo-
cation where I received my second honorary degree, they actually have frog watches. Last year at AS Peter + I heard them again around the time of my fifth honorary degree from SUVP (Plattsburgh. (i.e. Roy Bishop, + Peter Jedicke, two of my closest friends.)

The program ended with a "hoot" from the famous AS Cowl.

CN3s! Even though it was cloudy I used Cupid to scan along the treetops to the North. I would not have discovered a comet even if it had been as bright as the Sun. At ~10:30 I packed the car + left the camp and the Northern Spring Peepers. On the Lewis-Wadham Road I could hear the peepers each time I passed a pond.

at the hotel in Plattsburgh, CN3s continued thigway. Wendee and Michael from Cortland, arrang-
ing an alumni event for next year. used the observatory at Garnet.

1515 SEM

(continued)

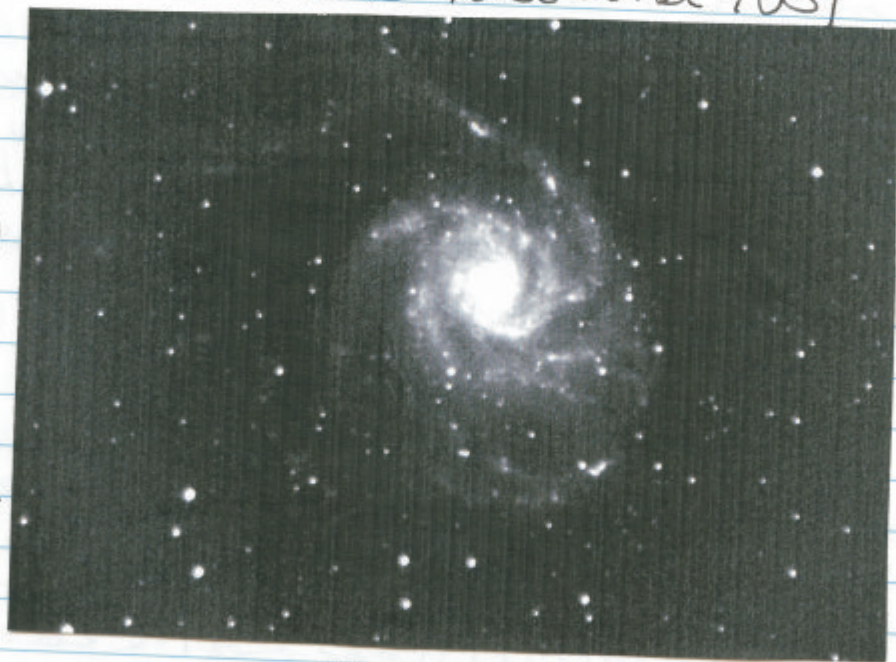
Wendee successfully opened it and set up Clyde. As she showed Mike Jupiter + Arcturus through Miranda, I moved Clyde around the sky from this place not far from the Adirondack Science Camp.

Images: M 84, 86 + eyes
TV Corvi

NGC 4038 and 4039

CN3s:
M 101
(Levy 2)

July 4,
1966 /
May 15,
2006.



M 3

M 101

We photographed this view of M101 a two minute exposure. It commemorates my sighting of M101, Levy 2, on July 4, 1966, while Comet hunting at the Adirondack Science Camp forty years ago.

At around 0150 I grew tired, and

05-06

5151 SEM (concluded), & Wendee was winding up things at home. So even though the sky at ASC was cloudy, we successfully observed objects from a site close to ASC, using our observatory Jarroae.

5152 S. Tuesday, May 16 / 1045-1100 / 2 / Plattsburgh
Cupid / SS2 through thin cloud, 0 spots.

5153 M Wednesday, May 17 / 0025-0130 / 1 / Jarroae
-818 plus summit walk / Idea that the Summers of 1964 and 1965 at Adirondack Science Camp, with its message to think independently, to follow the muse & design & carry out an independent project; to follow & complete a dream's, might inspired me to dream up my comet hunting project 2 months later.
August 1965 Camp ends
Late Sept " Ikeya-Seki disc.
October " decision to start CN3
December 17 " start of CN3

There were earlier, completely independent projects. SS1 - to observe through the solar cycle - in 1963, and Project Milky Way - to map the MW in 1962 & 1963. But the start of a telescope comet hunt was a completely new bud of independent thought.

10/-
mirrored
ly

and

15154 S.

Friday, May 19, 2006. / 12:00-13:00 /
 1 / Jarnac (original) / I began by
 photographing the "No Hubble -
 Space Telescope sign" just 5 minutes on
 the Montreal side of Jarnac, and then
 arrived at the cottage. The gate was open
 but I didn't go in. I just walked around
 back & forth from the stream to the
 Monacum's driveway a few times.
 It had been raining on the way up
 but was no rain at all while I
 was there. I set up Cupid on the
 back of the upper and I just looked
 at the building with finder and of
 the main telescope.

Then it was time to go, session
 successful.

15155 S2.

1800 - 1830 / 1 / Carleton University
 Ottawa / The RASC (GA) Cupid /
 The pyramid of people with Cupid in
 front.

15156 EM3.

2300 to 0200, EDT; 2000 to 2300
 where Wendee is at Jarnac (the new one)
 and Peter and Jare at Carleton.
 Let's say - near the old Jarnac.
 Wendee successfully opened the
 observatory and around 11:30 I
 started choosing objects. Our
 first choice was M57, then M4

CN3s.

05-06

56EM3
conc'd.

At first the system was slow and didn't update properly but it was pretty and the image the telescope returned was great. Everybody was talking & laughing, but absolutely silent when the first image was finally displayed.

Here, near the old Jarnac, we set up in a rains form and observed, using the new Jarnac, the following objects:

M57

M4

CN3s: "The Eyes" & M84 & 86

M51

NGC 5128 (Centaurus A)

Omega Centauri

TV Corvi.

At first as I said the system was slow. But then after restarting the program (stopping then restarting) it worked PERFECTLY. So tomorrow night I'll stop & restart at the very start.

Peter said that this project might be the most significant observing ever done at a F.A., at least in the ones we attended.

I am very pleased with the success of the CN3s project this evening, & very proud of Wendee's role which made it possible.

15157B. Earlier: as part of CN3s;

Sat May 20/0900-1200 / Four on future of CN3-type ref
15157 EM2 Saturday May 20/09 2300 to 0300
1-0 in Ottawa, 3-10 in Tucson (Jarnac)
Phon 8 in Ottawa at the end.
We had a big crowd in the observing
room!

CN3s. Even though Wendee
reported clouds except in the NW
we decided to open anyway. I deleted
the Clyde pointing system, since the
first few attempts failed due to clouds.
We began with a faint reading of
M51, then the next making was with
M101 and M33 and NGC 4038 + 4039
and TV Corin. It was not necessarily
in that order; M101 was later. We
also tried M31, M36, M44 - clouded
out. - And the Coma cluster.

Again the program CN3s was
really well received. There were
dozens of people who came, suggest-
ing objects. Jim Low from Montreal
(now Toronto) made the early suggestion.
Wendee closed up at ~ 1:30 EDT
At the annual meeting the next morning
Peter announced that these last 2
nights might be a part of the Observing
Committee's work.

Just before 3, at around 2:30,
checked and for the first time all week
the sky was clear. Cupid was used to
look at γ and its moons, & M13.

05-06

- 3:4 type prog
00)
uncle/
f
xol
e
uda.
th
39
sarily
f
o
ng est-
mical
gations.
T
paining
just 20
persing
: 30 g
week
sed to
- 15158S May 21/1045-1105/2/RASC/SS2 with Cupid / 3exp
15159S May 22, 1948, 2006/1500 to 1600/7/
Patout Tomblough's home / Wendee and Patsy /
SS2: 0. Photos of Wendee with Cupid
and Patsy with Cupid.
- 15160E2 2300 to 0000/10/Jarnac/CN3e,
CN3e F and K11.
- 15161M3 0245 to 0430/10/Jarnac/end of
CN3F+K11, CN3d 1^h E.
PEGASUS IS BACK!
- 15162E May 23 Tuesday / 10/Jarnac/CN3e, CN3e
CN3K11, CN3F prep. 2000-0000
CN3S with Clyde. PEGASUS install w/ Dean
- 15163S May 24 Wed / 1000-1100/Wendee closed
observatory earlier. SS2.
- 15164E2 2000-0000/10/Jarnac/CN3e, CN3F
CN3K11 prep, CN3S with Clyde.
- 15165S May 25 Wed Thursday / 0930-1000/
10/Jarnac/Wendee closed obs earlier,
and then SS2: 1 very large
prominence. It but faint.
- 15166E2 2000-0000/10/Jarnac/CN3e CN3F, CN3K11
CN3S with Clyde.
- 15167M3 0245-0430/10/Jarnac/CN3F, CN3K11,
CN3d 1^h E.

15168E May 26/27/2010 to 2315/10 / Mt Jammon /
61" telescope, Camp - with Michael
Magee, Sid Leach, Don McCarthy.
Got a ticket on way up. One from new
Ph.D (+2 yrs) told me that I was
a major inspiration to him. "But
I'm just an amateur!" "Do you
inspire people like no one else."

15169M2 0000 to 0045/10 / Jarnac / CN3 prep.
CN3e.

15170M3 0245-0415/10 / Jarnac / - / CN3 prep F,
CN3k11, CN3 1.5 E.

15171E Sat May 27/2000 to 0000/10, windy!
CN3S with Clyde. Paul Gray from
the Maritimes used it all evening
for imaging. CN3e TV Ow.

15172M2 0245 to 0430/10 / Jarnac / CN3 F
CN3k11, CN3 1.2 hours.

15173AN. May 28 / 2000-0445/10 / Jarnac
CN3F, CN3k11, CN3 2.2 E
CN3L11, CN3n, CN3t CN3e
I rebalanced Pegasus all by myself
and used it for tonight's comet search.
Pegasus, Obadiah, Esther, Flaire,
Clyde. Took beautiful Milky Way
picture.

05-06

15102E might have
inspired this:
from my granddaughter

4-10-06

Astronomer Summer ⁽¹⁹⁾

I am an astronomer & look in my telescope. One night, I saw a new planet and I was very scared, I call my friends and they saw the planet, too. It was very bright and so beautiful. I named it bright spring. The next morning, when I read the newspaper and I saw my name in the newspaper and saw the name of the planet. When I was looking in my telescope that night I saw the bright spring and I gave that name for my planet. The next day, when I was walking I still saw my planet. Finally, my planet was gone, and I was very, very sad that I didn't see it no more.

~~~~~	news
~~~~~	paper
~~~~~	by Summer
~~~~~	

15174E May 29/ 2130 to midnight/ 10/
Jarnac) The Summerfields arrived!
Wendee + Bob + Lisa observing with me.

15181AN
concd.

15175M2 0245-0500/10/Jarnac/CN3F,
CN3K11, CN3d, = 1.0 E. With Bob
who used his binocular 6" f/5's. (next session)

15176E May 30/ 2000-midnight/10/Jarnac/
CN3e. This was the session Bob setup
his binoculars

15177SAN May 31/ 1900-0500/10/Jarnac/Sky
2 (Sunset 2), CN3d 0.8^h E.
CN3F, CN3K11, CN3e, CN3t, CN3n

15182E

15178S June 1/ 1200-1330/10/Jarnac/
Sky 2, ~~Sunset~~ SS2 9, 2 prominences

15183E

15179E2 2000-midnight/3/Jarnac/CN3F,
CN3K11, CN3e, CN3n

15184E

15180E June 2/ 2300-000/3/5/CN3F, CN3K11/
CN3e, CN3n

15185S

15181AN June 3/ 1930-0450/3, 10/Jarnac/
T4T thank you party. Lots of people,
~25 people, and plenty of observing
through clouds. Cleared around
midnight. Jim Charbonneau &
Carter Smith stayed til past 2.

15186E2

- 6

06-06

15181AN conc'd. CN3F, CN3K11, CN3d, 1^h E. A good time was had by all. Wendee held things together beautifully. I didn't even mind Andrew Cooper's criticizing virtually every aspect of our observing. The Pectus + Kalas's were also a great help. Regarding Andrew, it was not appropriate for him to do that in front of every one, even as he was obviously enjoying himself. But the clearing sky let the session end beautifully.

15182EM June 4/ 2230-0005/3/Jarnac/
CN3F, CN3K11, CN3e.

15183E. June 7/ 2300-midnight/3/J/walk
with The Beagle.

15184EM June 8/ 1950 to 0100/3/Jarnac/
CN3F CN3K11 CN3e CMP-1
Tau Herculis $M_v = 2.5$. Slow + Short.

15185S June 9/ 0830-0850/3/Jarnac/
SS2 with Mintaka 2; 14 + 2 prominences.

15186E2 2000 to midnight/7-m/Jarnac/
CMP-1 CN3F CN3K11, CN3e, CN3n.
Tonight, I did a good observing session
— 65 Cybele picked up — on 3 telescopes
Clyde, Bradish, + Esther.

CN3e:

06-05

15197E June the 19. 12200 to midnight after coming home from M4. There was just enough time to set up Clyde to catch Clyde's star, TV Corvi, before it set. And lo: Clyde's star, TV Corvi was in its 2nd outburst of the season! Very exciting.

15198E June 20. 12000 to 2330. /10/Jan-
nac / Clyde. CN3K11 and CN3e.
Clyde's still in outburst.

15199M2 0215 to 0420 /10/ Jarnac / Miranda.
CN3d 1.5h East with Miranda.
CN3F CN3K11, CN3n, and

15200EM June 21, first day of Summer. /
2305-0220 / 2-1 P try at CN3's
various photographic searches.

15201E June 22 / 2300 to 2315 /, mostly
cloudy.

New Zealand

15202M June 26/27 / 0600 to 0625 / 7/ Auckland
airport, New Zealand / Wendy / Found
this orientation session a little hard,
but I did locate Venus, α & β Centauri
backwards as they were low. Later on
identified Fornaxant & Crux over-
head.

15203E. June 27/1930 to 2100/9-1
Observatory in St. New Plymouth, New Zealand (12" + Clark telescopes. Used 12 to see η Carinae + Tarantula. Used Refr. in dome to see Jupiter & B Cam, Coal Sack, Gux, & η Carinae all clearly naked eye overhead from this top southerly location. Rod Austin here. 1520 con

15204E. June 28/2000 to 2300/9-3/
Observatory at New Plymouth. Rod Austin and Wendee here. We used the Clark to get a beautiful view of the η Carinae nebula and η Carinae - bright red - itself. It was beautiful looking at Bart's nebula through an old Alvan Clark from New Zealand.

15205E. June 29/1950-2000/ With Wendee we viewed δ + B fen + Southern Cross, from in front of our hotel. 1520

* 15206M. July 1/2, 2006/0500 to 0700/10+
Rod Austin's graveyard comet hunting site. Rod met me at the hotel just before 5 am this morning. I was up earlier with a horrible headache but I was much better by the time he arrived. We drove to the site & set up his 8" Meade. 15209
15210
15211

07-05

15206M Schmidt-Newtonian. We had an hour
concd. of time, and we split it into quarters.
I did the first 15 minutes, then Rod, then I,
then Rod, and together we did a good
search in the far southern sky.
His scope is mounted on a meade tripod
atop of which is a special mount that
allows the eyepiece to stay stationary
in altitude.

The stars hung like baseballs,
as Grampa Pearl and told me of a cruise
she & Grampa Maurice were on. Both
the Cross area & the 2 clouds
were visible - Cross fairly cloudy
high. The hMC was clearly mottled
even with the naked eye. A beautiful
session. Then we visited some others
who were had an observatory nearby.

15207E July 3/0000 to 0400 / aboard plane
heading NE over the Pacific.

15208E July 4/2000 - ~~2000~~²²⁰⁰ / 3 / Jarnac /
CN3e TV Carri. 50th anniversary of
Twin Lake Camp Meteor.

15209E July 5/2030 - 2300 / 3 / Jarnac / CN3e.
CMP4 no meteors

15210E July 6/2030 - 2300 / 10 / J / CN3e. R11.

15211M2 0330 to 0415 / 3 / Jarnac / CN3d
0.5^h East. CN3F, R11, n.

15211E. July 8, 2006 / 2030 to 2300 / 10 / Jarnac /
CN3e CN3F kll, n.

15222:

15213M2. July 8, 40 year anniversary of the
great aurora at ASC / 0335-0430 / 10 /
CN3d 30 minutes E with Pegasus
whose RA encoder now I have repaired.

15223

15214E. July 9 / 2015 to midnight / CN3e F kll n.
Discovery and Intl. Space Station
bright in southwest.

15215ES. July 10 / 915-930 / 3 / Jarnac /

beautiful hook prominence

15216E July 12 / 2045-2300 / 3 / CN3 0.5 m Pegasus

15217E " 13 / 2000-2300 / 3 / CN3 p.1 Pegasus

15218E Friday, July the 14 / 1730 to 2300 /
3-2 / Jarnac + Wendee, + 747 BA pilot
Brian Whittaker. We set up and looked
at 2 before rain clouds + wind pulled
in. CN3d 0.7 m

15219E Saturday, July the 15 / 1430 to 2200 /
3 / Jarnac + Wendee, and Sid + Gloria
Leach. We showed them the observatory.

15220S. Sunday, July 16 / 900-noon / 3 /
Jarnac. Moving shed to front of
office. SS2. 0.1 p.

15221E. Tuesday, 18 / 2200 to 2330 / + 7.3 /
Jarnac.

07-06

15222E. Wed the 19th / 2315-2345 / 3 / Jarmac /
The Beagle. CMP-1 / nice Delta Aged
- Mr = -2 in SE. another probable
rapid sporadic.

15223EM Thursday, 20th / 2250 to 0100 /
10 / Jarmac. CMP / no meteors. I
was walking the Beagle when we heard a
buzzing sound that I took to be a
bug at our bug like. A short time later,
on the return journey we heard the same
sound again. I immediately realized
that this could not be a bug. It was
too close. We were on the 3 yard
S side of the fence. I found curled
beneath a palo verde tree a rattle-
snake. I brought the Beagle in
and Wendee I went out. As
Wendee shined the lights on the snake
I planned to grab it with our brand
new snake tongs. I aimed for the
fattest + most exposed part of the coil
and practiced several times. But
the aim was true; I got him first
try + he was thrown over to the
east lot. I think he had just eaten.
The critter didn't want to move.
Earlier Wendee + I were out
looking at the beautiful sky, what
a night.

15224AN. Friday, July 21/2000 to 0325/
10-3/ Table Mtn. Star Party/
Minerva, several other telescopes/
Ajai Selig, many others!
CN3s 4^h 10^m NW, N, and E.

Beautiful night. CMP 15 meteors
including one very bright one - 4
below VMa in the North. This site
is pretty dark, & accessible by a
single-lane very dangerous &
curvy road. Especially heading
down the last few miles of Table Mtn.
I really did enjoy the conversation
that accompanied this observing
session.

15225EM. Saturday July 22/
2000 to 0715/ 9-10 / Table Mountain
Star Party / Ajai & others, many
others. During my talk this
evening (2010-2110), there was both
rain and a beautiful rainbow.
The tent overflowed to the outside
so lots of people were sitting outdoors
during the talk but none left. I
received a standing ovation.
Then we sat outdoors and did a Let's
Talk Stars. Finally I began
comet hunting, and also saw M51 with
lots of structure in its arms thru
Ajai's telescope. CN3s 0^h 20^m NW,

The Adirondack Astronomy Retreat

07-06

15225/ 15226 E Sunday, July 23/ 2300 - 0000/3/
Jarnac.

15227 M2 0400 to 0430/3/ Jarnac / Pegasus/
CN3s 0.1^h E. Early morning final
email check and AA Retreat sky
clock check before observing before
leaving for the Retreat.

15228 AN. Tuesday July 25/ 2100 to 0350/
3 / The Adirondack Science Camp, Adirondack
Astronomy Retreat / Mipera, other telescopes
and equipment, mostly set up by the pond/
Wendee, Mark, Vanette, Summer, Matteo,
Peter + Dianne, Alex Scheline, and
others.

It was a beautiful night even though
the sky didn't get really good til midnight
or later. We counted meteors,
people were imaging - there is a
beautiful image of M51.

M33 naked eye

CN3s 1^h 30^m NW, N, NE

CMP-1 Delta Aquarid Meteor Watch
58 meteors mostly Perseids.
2 possible Omicron Draconids.

The group was spread out along
the west shore of the pond. The grass
was damp but everyone really
enjoyed it. The experience.

15229S. Wednesday, July 26 / 12 noon to 1400 /
3 / ASC-AAR / Mark + Nanette, Summer +
Matt, Peter + Dianne / Hike up to
Horseshoe ledge, Pictures of Camp
through Flaure.

15230EM2 2000 to 02:30 / 10-3-2 / Adirondack
Astronomy Retreat / Minerva, other
telescopes / Wendee, Nanette, Mark,
Summer, Matt, Alex, Peter, Dianne,
and the others in AAR /
CM3s 1.8h SW, NW.

CMP-1 Delta Aquarid Meteor Watch 28.
City was on + off ton + off all night
until about 1:30 when it just degraded.
Stopped at 2:30. A very good
session. Some bright meteors.

1 possible Omicron Draconid. Discussed
Mike about how AAR/ASC obs. would work.

15231S Thurs July 27 / 11:45-12:30 / 2 / AAR-ASC /
Group picture, and beautiful blue Sun
through Peter's white light filter
binoculars. Sun partially obscured
by clouds.

15232EM2 1930 to 0300 / 10 then 3^{then} / Adirondack
Astronomy Retreat. / Minerva but inside away from
heavy dew, other scopes. CMP-1 with
Delta Aquarid Meteor Watch 12 meteors.
Very enjoyable. Nanette pointed out a
lot of satellites. I talked with

07-06

15232E M2. Peter & Diane at the end, earlier with
contd. others about the sublime beauty of ob-
serving with this site at * in the Adirondack
sky. It went very well. Summer
& Matt enjoyed the 1st part.

ndack 15233E S. Fri July 28/13-1400/0/ Camp Minnowbrook/
Tour of Lake Placid with Wendee, Nanette,
Mark, Summer & Matt. View of Camp
Minnowbrook with our family.

28
at
bed.
15234E 2 2145-2200/7/ Springfield, Vermont/
Harness House and Summer "discovered"
the very thin crescent Moon low in the
sky. She also pointed out Summer's A
& named Vega, Altair, & Deneb.

scavenger
work
A.S.C/
in
used
15235E Saturday, July 29/2000-2130/1-/
Stellafame/ Shadowgram.

ack
way from
re.
* a
15236M On Saturday August 5/6/0230-
0430/10/ Jarnac / Pegasus. I couldn't
sleep this night, no. So I rose at
moonset and I used Pegasus, CN3
1.3 hours NE. Boy Pegasus is a good
telescope.

15237S Aug 9/0240-noon/3/J/Wendee I moved cactus, ^{mintaka} SS2, 2p

15238E Aug 11/12/ 2250-2330/1/ Jarnac /
CMP No meteors.

15239E Aug 12/13/ 2300 to 0000/2/ Jarnac / CMP-1
No meteors.

15239⁴⁰EM Aug 13/14/2300-0130/3/Jarnac/The
Beagle / CMP-1 on the hammock,
which I set up on the path of the
observatory. It was fun. I saw
a fairly good sky. No. of Perseids: 2
both 4th mag. and in Cygnus region.

15245

15240S. August 18/1600-1800/10/Jarnac/Cordelia/
Wendee and Thom + Turia / planting
a vertical prickly pear. SS2 1st 2, 2 p.

15246

15242M2 0040-0130/3/Jarnac/CMP-1
On the hammock; I observed + saw
1 probable Iota Aquarid. Fourth mag,
short.

15248E

15243E August 20/2220 to 2300/3 at Hacienda
del Sol, 10 at Jarnac. Wende + I
observed the beautiful sky between our two
sites. CMP-1 August 21 Gamma Perseids
none seen.

15249S

15244EM before 43/August the 19²³/#00 to 0100/10,
then 3, Jarnac/The Beagle. CMP-1
with Hammock. 4 meteors. 3 of them
were Perseids. The other was a possible -
short 5th mag. Alpha Capricornid. It
was extremely close to α Cap. Sky clear
then off α + nicely breezy. This was a
very pleasant session.

15250E

15251E

08-06

15245E. August 20/21/22/2000-2245/1/
Haciendadel Sol/CN3g; discussion and
practice session with Carolyn Phoenix
about the scanning. To bring her into
the picture we will start slow with just
a few mager sets per day. A good discussion.
Carolyn may also to run the scope from
Flagstaff. All possible!

15246E Aug 23/24/23 30-midnight/3/Jamaica/
The Beagle/CMP-1 - no meteors.

15248E August 25/1900 to 2145/3 Jamaica/CN3f/1,
CN3E. This session featured remote obser-
ving from Starfest. Bob Denny was there
in Canada and in front of a group of
~100 or more people, he imaged objects
like M31 through Clyde. A very
satisfying session.

15249S Aug 26/0840-900/3/Jamaica/SS2 1:11;2
with Echo.

15250E. August 28./1940-2100/3/Orlando.
Wendee, ~~Fritz~~, the Gedickes.

15251E. 8/29 2045-2200/3/Orlando/Epcot Center/
We saw fireworks, and a digital Earth,
juxtaposed by coincidence with the
real Moon in the sky and real Jupiter.

- 15252S. August 30 0830 to 0850 KN3 L11. plane. Photos of Hurricane Ernesto. 156
- 15253E. Sept 1/2300 to 0000/2/Jamaica/ Views of Jupiter. With Wendee & Karen Nickel. Tried to see Spacecraft impact on Moon but clouds interfered - later learned too faint 152
- 15254E September 2/2200 to 2300/2/Jamaica/ Karen, Wendee; same as last night though cloudier. 152
- 15255S Sept 3/1100-1300/1/Jamaica/walk. paid for it next day with # increasing numbers. 1526
- 15256E September 4/1900 to 2300/2/Jamaica/ Kalaw, Pecks, Michael Magee, & Wendee. 1526
- 15257S Sept 9. 10800-1700/3/Jamaica/SS2 1.5, 2 with Mintzka. Photography of TV-Launch of Atlantis. 1526
- 15258E. Sept 14/1900 to 2100/6/Palmdale, California. lecture at Planetarium followed by naked eye star party - Jupiter & Arcturus. 1526
- 15259E. Sept 15/1900-2130/7/Palmdale/ bigger lecture at planetarium followed by star party with 2 telescopes - Jupiter. 1526

09-05

15260E. September 17/1900 to 0000/3/Jarmac/CN3LII,

15261S. September 18/ 1800 to 1830/3/Jarmac/SS2
0, 1 Cordelia.

15262E. Sept 19, Mom and Dad's anniversary/
1900-2100/3/Jarmac/CN3LII, CN3 0, 3^h
for total of 1131.6^h since last viewed.

15263S. Sept 20/1800-1830/3/Jarmac/SS2 1, 1, 2
with Cordelia: Format = SS2: 1 group,
1 spot, 2 prominences.

15264E2. 1930-0000/3/Jarmac/CN3LII, CN3b
0.1^h with Samwise. First of short viewed
sweeps with Samwise before beginning
CN3LII with 2 other + Paula's Minnowbrook
lens.

15265S. September 21/1745-1815/10/Jarmac/SS2
1:1, 4 with Cordelia.

15266A/N2. 1900-0515/3/Jarmac/CN3LII, CN3m
CN3 1, 3^h E, a little west. Dean and I
had a very happy night installing Flaire's
hyperstar.

15267B. September 22/1710-1725/3/Jarmac/SS2 1:1, 0
w/ Cordelia.

15268E2. 1900 to 0000/3/Jarmac/CN3LII, CN3n
CN3R11.

- 15269S Sept 23 / 0730-0845 / 3 / Jarmac / SS2 0.5
with Cordelia Wendee closed from last night. 15279S
- 15270E2 2000-2330 / 3 / Jarmac / CN3L11, m, n CN3b
O.1 with Samwise. 15280
- 15271E September 24 / 1855-0000 / 10 / Jarmac /
CN3L11 k11 mn CN3b O.1 h. 15281E
15282
- 15272S. September 25 / 1530 to 1545 / 10 / Jarmac /
SS2 O.1 Cordelia 15283
- 15273EM2 1900 to 0335 / CN3L11 k11 mn / CN3b O.1 h
with Samwise. 15284M
- 15274S. September 26 / 0730-0800 / 10 / Jarmac /
SS2 O.1 Mintaka Wendee closed J1. 15285S
- 15275SEM2 September 26 / 1800 to 0100 / 3 / Jarmac /
CN3LnR CN3 O.1 with Samwise W. 15286E
- 15276S. September 27 / 1000-1030 / 10 / Jarmac /
SS2 0.5 with Mintaka. Wendee closed
J1 from last night 15287M
- 15277S2. 1530 to 1545 / 10 / Jarmac / SS2 0.1 with
Cordelia. 15288M
- 15278EM2 1900 to 0335 / 10 / Jarmac / CN3LnR, CN3b - CN3
O.1^h west with Samwise. 15289M

09-05

- SS2 0.5
at night. 15281S September 28/1030-1100/10/Jarnac/
SS2 0, 3 with Mintaka.
- CN3b 15280S2 1745-1800/3/Jarnac/SS2 0, 1 with Cordelia
- 15281E4/ 1915-2300/3/Jarnac/CN3K11.
- 15282S. 2006 September 29/1455-1510/3/Jarnac/
SS2 1, 3 Cordelia.
- 15283E2. 1830 to midnight/7m/Jarnac/CN3LKMA
- 0.15 15284M3 0350 to 0530/10/Jarnac/CN3Kmn
CN3d 1^h E with Miranda, Flare's 1st ast
eroid - 144 Vibia.
- 15285S September 30/1745-1800/3/Jarnac/
SS2 0, 2 with Cordelia
- Jarnac) 15286E2. 1900-0000/3/Jarnac/CN3Kmn CN3b
0.1 west with Samwise.
- re/
closed 15287M3 0400 to 0515/3/Jarnac/CN3Kmn, CN3d 0.8
east. A strange session. When I
came out I noticed that Clyde was trying
to do focus shots against the lower wall.
I got it straightened up okay and
that took a while, but finally began
my comet hunting with Miranda as
Clyde, Esther, and Flare did their
morning run.
- 213 - CN3

Kol Nidre

15288E. October 1, 2006 / 1900 to 0000 / 3 / Jarnac /
 CN31 kmn CN36 0.1 W.

15289
 conc

Yom Kippur

15289M2. October 1/2, 2006 / 0355 to 0600 / 10 / Jarnac /
 CN3K11, CN340m, CN3n^{CN3f} CN3d 0.7^h East
 with Miranda. Discovered a comet
 0.6° from Saturn.

I began observing just before 4 am
 I set up near Saturn, which was -10° up,
 and began a sweep. When Saturn
 came into the field, I immediately noticed a
 bright fuzzy object $\approx 5^\circ$ away. The
 object could easily have been a ghost or
 a reflection of Saturn. I decided next to
 use Miranda's 8" f/10 sidekick to check.
 With a different optical configuration,
 the object should disappear or be in a
 different place, but it was still there.

I now needed to use all my 41 years of
 experience with comet hunting to make a
 decision. But just then Flaire helped. He
 just completed its run and it parked itself.
 I pointed it at Saturn & managed a
 few pictures before dawn got too bright.

Then I went inside and explored the
 images. I had trouble solving them, but
 figured it out - and saw clearly the ob-
 ject moving southward. I decided to
 report it to the CBAT, with the sugges-
 tion that it could be a ghost, but that
 I did not believe that it was.

1529

10-05

15289M3
concl'd.

Then I reached Tom. We spent some time on these images. He communicated with Tim Span as I was with Dan Green, and Tim decided to place the object on the NEO confirmation page. There was nothing to do after that but wait. The low point was when Tom for a moment got a coordinate wrong & thought it was Titan. ~~Imag~~ It might not be a comet, but it wasn't Titan!

Meantime we passed through an excellent Yom Kippur day. I did the Eitz Chayim prayer, and Wanda enjoyed blowing the shofar at the end of the concluding service. Then we ~~rather~~ left the shul. Story continues at next session.

15290E.

October 2, Monday / 1850 to 0000 / 3 / Or Chadash, then Larvae / 3-7 / CN34-11 with Dothart Paula's Mynnowbrook one. After CN34-11 began I checked email - no message. Then we watched TV for a while & I checked the mail once more. A letter from Dan - my object has been confirmed as a comet. I was shaking. My eyes were tearing - after 12 years. I printed the email and brought it in to show Wanda.

This was not a ghost of Saturn. C / 2006 T1 is a new dusty comet!

15291M2. 0350 to 0630 / 3 / Jarnac / Wendee /
CN3t, CN3k11, CN3n, CN3-40m. 152
Wendee and I went out to see our new
family addition together this morning -
more like a comet now that it is farther
from Saturn. Also CN3t + m took
pictures of it. CN3 0.4^hE.

15292E Oct 3 / 1900-2000 / 3 / CN3 KMN. Channel 4
interview. 152

15293M2 @ 400-440 / 3-2 / Jarnac / CN3 0.1^hE.
brief look at region - barely saw Saturn.

15294EM. Oct 4 / 2230 to 0315 / 0 to 3 / Jarnac /
Tonight Dean and I had a very nice night
getting Obadiah all set + installed
despite rain + clouds. We also did a
Let's Talk Stars show in the observatory. 152

15295S October 6 / 1100-0345 / 3 / Mt Wilson Observatory
Scott + Echo Roberts, Hands on the Sun
group, Don Nicholson, 152

We had a marvellous tour of Mt Wilson.
We saw the 100-inch, 60-inch, 60' tower,
150' tower, + Jevengit to see the Snow Teles.
cope and the dome that housed Obadiah.
I gave a lecture inside the 100-inch Dome. 1529
It was my poetry of the night sky, + it
ended with the Ruyter poem in honor of the
opening of that telescope in 1918. 15300

152955
concd.

10-05

The poet is so right: we creep to power by inches. What a feeling to give a talk aided by the mighty 100-inch. The scope is still being used - even for a little extra-solar planet study.

Gabos saw the dome where Obadiah used to live - his first home. It's good that he is set to work again after the other night.

nd 4

15296E. Saturday, October 7/1830 to 2300/
4m/Meade instruments. Tandem on the ☉
+ party. Moon, Owl cluster. Watched a 14
go through its altazimuth passes. A
fascinating procedure.

E.

c/
right

15297S Sunday, October 8/1030-1255/3/
my USSF lecture. A very successful
event. We saw ~~the~~ the ☉ through one
of several Coronado telescopes.
SS2 1 big prominence.

la
atory
eratory/
Sun

15298E2 1900-0000/1,0/Jarmar/CV3L11
trying the new CCD then trying to get
the old one working again. I brought
meteor in NE.

son.
wer
w Tebs.
radial
Dome.

15299SEM October 9/1700-0030/7m/Jarmar/
CV3R11, CV3L11, CV3m, CV3n. Fixed CV3L11
with help from Meade - Scott + John.

at
The

15300S Oct 10/830-930/10/Jarmar. SS2
with Mintaka. Wendee closed J1.

15301EM2 1830-0108/7/Jamaica Wendee,
Andy Bauman, from the Adirondack
Science Camp / CN3L11, CN3k, CN3m,
CN3n. Good reminiscing!

15302S October 11/0840-1100/10/Jamaica
SS2 with Mintaka. ^{intermittent} 0, 7 prominences

15303E2. 1855-2308/2/Jamaica / CN3L11.

15304S. October 12/ 1415-1430/10/Jamaica /
SS2 0, 7 prominences.

*15305 E2. 1900-midnight/3/Jamaica/

CN3L11 Photos of Comet Swan with
Lothar & Paula's Minnowbrook lens.

CN3K11 CN3F CN340m CN3n CN3t

15- CN3b11 1^h West with Pegasus and Samwise. 15312

A wonderful session observing with
Pegasus and listening to Obadiah, Clyde,
Esther, & Flavia, all moving their way
around the sky. Also operating

were Gamwise and Hyperion, but
they could not be heard from their
buildings. I bright meteor, and
Scott called to say I will be soon
receiving a 90 cm solar scope. 15313
15314

15306S October 13, Friday / 0735-0830/3-/
Jamaica SS2 0, North Mintaka. 15315

15316S. October 19/ 0840-0908/10/Jarman/SS2 0
with Muntaka.

15317E2/October 19/ 1900-0000/10/Jarman/CN3 F
k 140m n + CMP1. CN3:

15318M3/ 0400 to 0530/10/Jarman/CN3 F k 1m n/
CMP1 12 meteors. heavy showers
building this year? CN3 0.7h E.

*15319AN October 20/ 1900 to 0530/10/Jarman/
CN3 F k ll 40m n CN3 0.5h E.
CMP-1 68 meteors - a very fine night.
Meteors were observed over a 2-h period.
Wendee saw the first 2 meteors.

15320S Oct 21/ 1700-1730/10/Jarman/SS2 1:90,
with Muntaka. Reinstalled CCD on Hyperion.

*15321AN2 1900 to 0545/10/Jarman/CN3 F k ll ll
40m n t, CN3 1.1h W, E.

CMP-1 8 Meteors. Wendee and I
saw the first - a beautiful bolide
goney ~ 20° West from α Orion,
exploded, left train. $\Delta \sim 2:15$,
a nearly Taurid from overhead to
near the S. horizon. Tried to disappear
but kept on re-lighting till finally vanished
to just above mountains in South.
Then a -5 bolide, moving slowly
near radiant near μ towards west,
Train lasted more than 6 minutes.

*1E
co

1532

153

153

1532

1532

15327E - October 26 / 1900 - 1930. / Walk Wendee + Beagle. 153

15328E Oct 27/28 / 1850 to 2300 int / 10-3 / Jarnae / CN3L11, Samwise / Wendee / Images of bright comet Swan - 4th magn with nice tail. I took 70 automated images, 90-seconds. CN3L11 Lethart Paula's 'Munnow-break lens. Also Pript. caught it moving in ~ 8 more images. 15

15329E Oct 28/29 / 1800 - 1815 / walk with Beagle and Wendee. - JI prep for Eneke's plague. 153

15330S Oct. 29 / 0730 - 0800 / walk in early morning clouds. 153

15331S2 1400 - 1630 / ~~10~~ 11 / Jarnae / Liz, Wendee & John Kalas / install of ~~no~~ new lower half of Eneke plague on Miranda. I had wanted to change it to include Fittell Tuttle's recovery just before his 1870s court martial. It worked! 153

15332S Monday Oct 30 / 0930 - 1000 / ³10 / Jarnae / SS2. with Mentaka 1, 15 + 3. prominences. Started Obadiah vacuum. 153

15332S ^{Tues} Abr Oct 31 / 0745 - 0815 / ~~10~~ 11 / Jarnae / SS2. 153

15334E2 2230 - 20:2300 / 7 - m / Jarnae / CN3R setup. 1534

10-06

Wendee 153355 ~~Monday~~ Wednesday, November 1, 2006 /
0745-0830 / 10 / Jarmac / SS2 with Mintaka
1, 33 + 3 prominences. Wendee + 9 put
Clyde away from successful CN3K II
search. Levy 396 object = NGC 3109.

15336E Wed Nov 2 / 1030-11:30pm / 7-F / Jarmac
CN3K II. Wendee. 1 bright Taurid to N CMP-1.

15337MS Thurs Nov 3 / 0900-1000 int / 7-F / Jarmac
SS2 with Mintaka. Wendee closed J1.

15338E2 2300-2316 / 3- / Jarmac.

15339S Friday Nov 4 / 1300-1400 / 7-F / Lisa's home /
Joanie inscribed "Echo" + "Miranda" in 2
of the solar telescopes.

15340S2 4:15-5:30 / 3-F / Cordelia C-90 arrival +
initial setup. Far too heavy to fit atop
Mintaka. 22:30-23:30

15341E Saturday / ~~2300-0000~~ / 3 / Jarmac / Nov 6 /
Monday CN3K II setup; Cordelia set upon
night stars in anticipation of transit
May 8. Wendee

15342S Tues Nov 7 8:00-9:08-10 / Jarmac /
SS2 with Cordelia C-90 1, 1, 13 prominences
changing rapidly.

15343S2 M 40-1530 / 10-3 / Jarmac / Saras-1 for trans
sc 2.12 or prominences

15344E-3 2000-2045/7-Fm/Jamaica/Saras
setup for me + for John Kalas. Wendee
suggested we use ^{our own} SS2 data to determine
sunset position for tomorrow. Her plan
worked brilliantly. Congratulations
Wendee for thinking of Sunset 2.

15347E
concl

15345E4 2230-2250/7-Fm/Jamaica/CN3K1/
setup, Saras/ check.

15346S November 8/0800-0830/10/Jamaica/
CN3K11 closeup

15347S2E November 8/1045 to 1730/10 - not a
cloud til sunset/Jamaica/
Transit of Venus

Telescopes: Cordelia (including Coronado 90)
Cupid (used mostly by Eli)
Mentaka (used by me + 1st Ck.)
Two PSTs for Echot Mirava hand held.
One re used by John Kalas

15348E

15349E

Two SCTs by Tim + Jerry
Wendee, John + Liz, Eli Maor and Dalia,
Tim Hunter + Jerry, Clark + Y Chapman.

15350E

As the time for 1st contact approached
I began the first of 3 30-min segments
of SLoat broadcast in tandem
with a live broadcast with ~~SLoat~~ Starizona's
telescope. That was more successful
than I thought - it caused me to

15351E

15352E

11-06

15347SE2 rest when I needed it.
concl I was looking through Mintaka while
Wendee was using Cordelia. I had tried to
figure out the angle and I got it right.
Wendee was by far the first - by about 1/2 minute
to see the nick in the Sun that soon I saw
through Mintaka. For the first few minutes
I could easily see Mercury moving in across
the Sun. Later, with Cordelia I could see
the planet moving past the small filaments.
Wendee & I also did a L.T.S. ask David about
about the transit.

Near 4th contact, the Coronado 90
lost the O in the trees but I followed it in
the upper white light scope right through
4th contact. It was a great session!

15348E3 7:250-2315 / 7-fm / Jarnae / CN3k11 setup

15349E November 9 / 2245-2315 / 10 / Jarnae /
CN3j with Clyde.

15350E Nov 10 / 2245-2315 / 10 / Jarnae /
CN3j with Clyde.

15351E Nov 12 / 2245-2330 / 10 / Jarnae /
CN3j with Clyde

15352E Nov 13 / 2245-2315 / Jarnae /
CN3j with Clyde

- 15353E November 14 / 2245-2330 / Jarmac / CN35 Clyde 1536
- 15354E Nov 15 / 2245-2330 / Jarmac / CN35 Clyde. 1536
- 15355E Nov 16 / 2245-2330 / Jarmac / CN35 Clyde 1536
- 15356E Nov 17 / 2245-2330 / Jarmac / CN35 Clyde. 1537
- 15357E Nov 18 / 2245-2330 / Jarmac / CN35 Clyde.
- 15358E Nov 20 / 2245-2330 / Jarmac / CN35 Clyde.
- 15359E Nov 21 / 2245-2330 / Jarmac / CN35 Clyde.
- 15360E Nov 23 / 2245-2330 / Jarmac / CN35 Clyde 1537
- 15361E Nov 23 / 2000-2045 / Jarmac / CN3 with Pegasus 0.1" 1537
- 15362E 2245-2330 / Jarmac / CN35 Clyde 1537
- 15363E Nov 25 / 1600-1700 / 3 / Jarmac / SS2 with Cordelia - Wendee + Leventhal 1537
- 15364E2 2000-2300 / Jarmac / CN35 with Clyde CN3 0.1" Pegasus.
- 15365E Nov 26 / 2245-2330 / Jarmac / CN35 Clyde. 1537
- 15366E Nov 27 / 2245-2330 / Jarmac / CN35 Clyde. 1537

12-06.

side 15367E Nov 28/2245-2330/Jamae/CN3J Clyde

15368E Nov 30/2245-2330/Jamae/CN3J Clyde

15369E December 1/2245-2330/Jamae/CN3J Clyde

15370E Dec 2/2245-2330/Jamae/CN3J-Clyde
This session took place a couple of hours
after Wendee + I returned from St.
Joseph's emergency. My breathing had
improved sufficiently so I could conduct
this.

15371E Dec 3/2245-2330/Jamae/CN3e, CN3j
with Clyde.

15372E Dec 4/2245-2330/Jamae/CN3k II, CN3j
CN3e with Clyde.

15373E Dec 5/2000-0000/Jamae/CN3k II, CN3e
with Clyde. Dean + Donnet + Wendee.

15374E Dec 6/2200 to midnight/7/Jamae/
CN3k II, CN3e with Clyde. Also
Dean + I worked on a new camera and
Flava.

side 15375E Dec 8/2330-2345/Jamae.

side 15376E Dec 9/1900-2330/7m/Jamae/
CN3k II, CN3k II, CN3e. Wendee closed
the next morning.

15377E / December 10, 2006 / 1900-0000 / 7m / Jarmac / CN3k11, CN3L11, CN3e Wendee closed. 153

15378E Dec 12 / 11 / 1900-2330 / 7m / Jarmac / CN3k11 CN3L11, CN3e

15379E Dec 12 / 1900-~~23~~⁰¹30 / 7 / Jarmac / CN3k11 CN3L11, CN3e. Found photog. L394 NGC 4096, originally found at ASC 07/28/06.

15380EM. Dec 13 / 1900-0145 / 10 / Jarmac / CN3k11 CN3L11, CN340^em, CN3 CMP - Gemmid watch with Wendee + Mike Terenzi. 109 meteors in 2 hours. 153

15381E. Dec 14 / 1800-2240 / 3 / Jarmac / short walk; not feeling well. 153

15382E Dec 15 / 1900-2330 / 1900-2330 / 3 / Jarmac / CN3k11, L11, F, e. Wendee c 153

15383E Dec 16 / 1830-0000 / 3 / Jarmac / CN3e F k L m Wendee closed. 153

*15384E. December 17 / 1700-0000 / 2 / Jarmac / CN3k11 through clouds, CN3L11, CN340^m, CN3e. Wendee closed next morning. CN341st anniversary. 153

15385E. Dec 19 / 1800-0000 / 3 / Jarmac / CN3L11 k11 CN3e. Wendee closed. Gustavo + Glorva visit. 153

1206

Dec 06

armac 15386EM December 20/1745-0130 intermittent/
 10/Jarvac/CN3e F k lm. Confirmed
 last summer's addition to CN3c.
 Found + photographed Levy 394 =
 NGC 4096, originally found at ASC AAR
 07/28/06, written on a card by Peter
 Jeddak, + left in my case for Munsiey
 Fil yesterday.

13k11
34096

k11
rid

15387E. Dec 21/1750-0000/10/Jarvac/CN3e F
 k lm. Wendee closed.

15388E. Dec 22/1830-0000/3/Jarvac/CN3e F
 k lm. Wendee closed J2 bldg.

15389E. Dec 23/1845-0000/3/Jarvac/CN3ef
 k lm. Wendee closed.

Jarvac

15390E. Dec 24/1845-0000/3/Jarvac/CN3L11.
 CN3e

3e F

15391E. Dec 25/1830-0000 int/3/Jarvac/CN3FR.
 CN3e. Wendee closed.

ac)

15392E. Dec 26/2300-0000/2/Jarvac walk with
 The Beagle.

t

15393E. Dec 29/1100-1200/1/Jarvac Wendee + G
 did an emergency repair of J2's shutter.

3L11
two

15394E2. 1730-2100/3/Jarvac/CN3111 not
 working yet after storm.

1206

Dec 06

armac 15386EM December 20/1745-0130 intermittent/
 10/Jarvac/CN3e F k lm. Confirmed
 last summer's addition to CN3c.
 Found + photographed Levy 394 =
 NGC 4096, originally found at ASC AAR
 07/28/06, written on a card by Peter
 Jeddak, + left in my case for Munsiey
 til yesterday.

13k11
34096

k11
rid

15387E. Dec 21/1750-0000/10/Jarvac/CN3e F
 k lm. Wendee closed.

15388E. Dec 22/1830-0000/3/Jarvac/CN3e F
 k lm. Wendee closed J2 bldg.

15389E. Dec 23/1845-0000/3/Jarvac/CN3e F
 k lm. Wendee closed.

Jarvac

15390E. Dec 24/1845-0000/3/Jarvac/CN3L11.
 CN3e

3e F

15391E. Dec 25/1830-0000 int/3/Jarvac/CN3 Fk.
 CN3e. Wendee closed.

ac)

15392E. Dec 26/2300-0000/2/Jarvac walk with
 The Beagle.

t

15393E. Dec 29/1100-1200/1/Jarvac Wendee + G
 did an emergency repair of J2's shutter.

3L11
two

15394E2. 1730-2100/3/Jarvac/CN3111 not
 working yet after storm.

- 15395SE Dec 29, Wanda's birthday / 1630-0000.
intermittent / CN3L11 repair. 15406E
- 15396E Dec 30 / 1930-2230 / 3 / Jarmac / CN3L11
w working! 15407S
- 15397M2 0415-0620 / 10 - Very 10 / Jarmac.
CMP1 8 meteors, 1 possible slow
moving Cepheid (from Comet Levy)
- 2 Ursids, 2 Coma Berenecids (?)
+ others. 15408E
- 15398E Dec 31 / 500-0515-1900-0000 / CN31. 15409S
- 15399M3 0500-0515 / 1 / Jarmac / CMP1.
No observing for Cepheids meteors this morning. 15410E2
- 5399 2007 15411S
- 5408S January 1, 2007 / 1300-1330 / 3 / Jarmac /
SS2: 1:11, 3 - Cordelia. 15412S
- 5401E2. 1800-2245 / 3 / Jarmac / CN3K11. 15413SE
- 5402S Jan 2 / 1715-1740 / 3 / Jarmac / SS2 2, 2 w/ Echo 15414SE
- 5403E2 1845-0000 / 3 / Jarmac / CN3k, CN3e TV
Cowie in outburst at $M_V = 13.5$.
- 5404M3 0550-0640 / 7m / Jarmac / CMP1. 1 Possible
Quadrantid. 15415SE
- 5405S Jan 3 / 1720-1735 / 3 / Jarmac / SS2 3:3, 5
with Echo.

-0000. 15406E2. 2300-2330/7m/Jarman/CMP1, CN3e

15407S. Jan 3/1300 to 1335/10/Jarman/SS2 3:3,5
CN3L11 Cordelia

15408E2 1900-0000/7m/Jarman/CN3e

15409S Jan 4/1700-1715/3/Jarman/SS2 2:2, with
Echo

15410E2 2300-2330/3/Jarman/CN3K11.

15411S Jan 5/1030-1045/3/Jarman/SS2 2:2
morning just before storm.

15412SE Jan 6/1710-0000/int/10/Jarman/
mac/SS2 2:2 Cordelia CN3K11, CN5, CN3e.

15413SE. Jan 7/1700-0000/int/SS2 2:2, 0 Cordelia.
CN5 failed to spot Comet McNaught in twt.

15414SE Jan. 8/1700-2330 int/3/Jarman/
w/ Echo SS2 2:2, 0 | CN5 failed to spot comet
TV McNaught in twt.

15415SE Jan. 9/1700-2300 int/3/Jarman/SS2 2:2;
ble CN3 0.2h, CN3e. CN5 success! Mother
Wendee, and I saw Comet McNaught in
twt, then I showed Mom Leo + Saturn
E, 3:3,5

- 15416M2 0545-0620/3/Jarmac/CN3 0.2 15
- 15417SE. Jan 10/0730-0930/3/Jarmac/
failed to spot comet in daylight due to clouds. 15
- 15418SE2. 1700-2300 int/CN3 15
- 15419SE2 Jan 11/1700-2330 int/3/Jarmac.
spotted comet in daylight; photographed it
in tvst. with Flare! 15
- 15420S. Jan 12/945-12:55/3/Jarmac
CN3. Observed and photographed comet
in daylight; combined image successfully
in appearance in Astrom. Picture of the Day. 15
- 15421SE2 2300-2315/11/Jarmac. 15
- 15422S. January 21/1630/1700/10/Jarmac/
SS2 2:2, 1 Cordelia. 15
- 15423E2 20-2345/7m/Jarmac/CN3F. 15
- 15424E Jan 25/2030 to 2345/7m/CN3eFk 15
- 15425S Jan 26/1620-1635/3m/Jarmac/
SS2 1:1,7 Cordelia. 15
- 15426S Jan February 2/1540-1555/10/Jarmac/
SS2 1:1,7 Cordelia 15

2335-midnight 02/07
15427 E2. Feb 3/1620-1640/10/ Jarmac / SS2 CN3LH
2:2,0 Cordelia.

15428 S Feb 3/1620-1640/10/ Jarmac / SS2 2:2,0 Crd
1 large plage near spots, no prom

15429 S Feb 6/17-1715/3/ Jarmac / SS2 2:4,0 Crd

15430 S 7/17:15-30/10/ " / SS2 1:1,1 Crd

15431 E2 1930-midnight int / 10/ Jarmac / CN3e

15432 S Feb. 13/1610-30/3/ Jarmac / SS2 0:7 Crd

15433 M Feb 12/ 0420-0530/3/ Jarmac / CN3d 0.6

15434 M 14/5:15-6:10/10/ Jarmac / CN3d 0.5

15435 S Feb 15/1650-1710/2/ Jarmac / SS2 0,3 Crd

15436 E " 17/ 1800 to midnight, int / CN3F

15437 S " 18/3/ 1645-17/ Jarmac / SS2 1,3 Echo

15438 E2 " 19/ 20-23/3/ Jr / CN3Fn

15439 E " 19/2000-2300/3/ Jarmac / CN3Fn

15440 S February 20/1630-45/3/" / SS2 1,2,1 Crd

15441 E2 1830-1900/ ^{SS3} Tanguê Verde Star Party

- 15442E3 1940-0000i/10/Jamae/CN3Fmn 1545
- 15443S. Feb 21/1605-20/10/Jamae/SS2 0,3 1546
- 15444E2 2000-0000/10/Jamae/CN3Fmn 1547
- 15445S. February 25/1745-1805/10/Jamae/SS2 1:1,5 1548
- 15446E2 2000 to midnight/10-Jamae/CN3Fmn. 1549
- 15447S Feb 26/1600 to 1615/10/SS2. 1546
- 15448E2 2000-0000 int 10/Jamae/CN3Fmn. 1546
- 15449S. February 28/17-1715/10/Jamae/SS2 1:1,3 1546
- 15450S March 1/1700-1715/10/Jamae/SS2 1:1,3 Crd. 1546
- 15451S 2 March 1/1725-1740/10/Jr/SS2 1:1,2 Crd 1546
- 15452S3P March 1 still/1705-1715/2300-2315 20/3/Jr. 1546
- 15453SP March 2/1705-1715/3/Jamae/SS2 1:1,2 Crd. 1546
- *15454E2 March 3/1800-1915/3/Jamae/Suroo/Last penumbral phase of Total Lunar Eclipse. barely visible but visible. 1546
- 15455S March 5/1740-50/3/5/SS2 0,2 Crd 1546
- 15469

15456E2 2000-2100 | 3 | Jarmac | SS3.

15457S. March 6 | 1705-1815 | 3 | Jarmac | SS2 0, 12
Crd. Also some inst. for CN3L11 Samwise

15458^{SE2} March 8 | 1700-1720 | 10 | Jarmac | SS2 0, 4
Cordelia.

15459E2 March 9 | 2000-2300 | 3 | Jarmac | CN3F1.
CN3e. SS3 1st anniversary.

15460S. March 10 | 1745-1800 | 10 | Jarmac | SS2 0, 6 Crd.

15461E2 1930-2300 | 10 | Jarmac | CN3e CN36. 0.1

15462M3 0430-0530 | 3 | Jarmac | CN3d 0.8^h.

3 Crd. 15463SP March 11 | 1700-1710 | 10 | Jarmac | SS2 0, 3.

15464E2. 1945-2320 | 10 | Jarmac | CN3.

1/5r. 15465S. March 12 | 1800-1815 | 10 | Jarmac |
SS2 0, 2 Cordelia.

2 Crd. 15466E2 1930-2300 | 10 | Jarmac | CN3Fjk.

1/ypise 15467M3 0430 to 0535 | 10 | Jarmac | CN3d 0.6^h.

15468S March 13 | 1655-1710 | 10 | Jarmac | SS2 0, 3 Crd.

15469E2 1930-2300 int | 10 | Jarmac | CN3Fjl CN36 0.1^h.

470M3	0430-0540/10/Jarmac/CN3 O.7 ^h E	15483M3
471S	Mar 14/18-1815/10/SS2 O, 2 Cordelia	15484S
472M2	430-0530/10/Jarmac/CN3Fd 0.6 ^h E	15485S
473S	Mar 15/18-1815/10/Jarmac/SS20, 2 Crd.	15486E
474M2	0430 to 0530/10/Jarmac/CN3 0.6 ^h E	15487M2
475M	March 16 0430 to 0530/10/Jarmac/ CN3F, CN3d 0.6 ^h E	15488E
476E	March 19/1730-2030 int/3/ABP/SS3/Echo. Wendee + I took pictures of Summer + Matthew + Echo.	15489M2
477E	March 20/1720-2200/3/Albuquerque/ SS3/Georgia O'Keefe Reading Night + Star party.	15490E
478S	March 29/1800-1815/3/Jarmac/SS2/O,3/ Cordelia.	15491M2
479E	1930-2300/3m/Jarmac/CN3F; In. CN3e	15492M
480M3	0430-0535/10/Jarmac/CN3d 0.2 ^h	15493S
481S	March 30/1815-1830/10/Jarmac/SS20, 2 Crdla.	15494M2
482E	1815-1830/10/Jarmac/SS2 O, 2 Cordelia.	15495E

15496M2

15497SE

th
to

15483M3 0430-0535/10/Jarmae/CN3Fk/CN3d 0.6^h 03/87

15484S March 28/1800-1815/10/Jarmae/SS2 0,2. Cordelia

15485S March 31/1800-1815/10/SS2/ 0. Cordelia

15486E April 11/2000-2300/10/Jarmae/CN3jnFCN3e

15487M2 0400-0500/10/Jarmae/CN3F CN3d 0.3^h

15488E April 12/2000-2300/10/Jarmae/CN3jnF

15489M2 0400-0500/10/Jarmae/CN3F, CN3d 0.5

15490E April 14/2000-2300/10/Jarmae/CN3jnF, CN3d 0.1

15491M2 0400-0500/10/Jarmae/CN3F CN3d 0.5^h

15492M April 15/0400-0500/10/Jarmae/CN3F, CN3d 0.5^h

15493S April 16/1300-1430/10/Jarmae/CN3jn

15494M2 0400-0500/10/Jarmae/CN3F, CN3d 0.5^h

15495E April 18/1945-2130/10/J/SS3/unsuccessful test of new 14 at Corona Foothills School.

15496M2 0400-0500/10/Jarmae/CN3F, CN3d 0.3^h

15497SE April 21/1430-2300/8/UA/SS3. Sharing the Sky Star Night at UA Mall. Dozens of telescopes, 1000+ people.

- 1548M2 0400-0500/10/3/CN3F CN3d 0.5^h. 15512M
- 1549E April 23/1800 to 2100/3/Jarzac/SS3/
Obs. dedication of the Wendee and David Levy
Observatory at Corona Foothills. 15513E
- 1550SE May 5/1800-2015/2/chez Richard + Myrna
Dougall/SS3. Dedication of his observatory. 15514E
- 15501E May 6/2000-2300/3/Jarzac/CN3e, CN3Fkmn. 15515E
- 15502E May 7/2000 to 0000/3/Jarzac/CN3Fkmn.e. 15516M
- 15503E. May 8/2030 to midnight/10/Jarzac/
CN3eFkmn. 15517E
- 15504E May 9/2000-2335/10/Jarzac/CN3eFkmn. 15518M
- 15505E May 10/1905 to 2130/10/Jarzac/CN3eFkmn. 15519E
- 15506E May 11/1730-1800/3/VLA, New Mexico. 15520M
- 15507E May 15/1920 to midnight/10/Jarzac/CN3e kmn. 15521E
- 15508M2 0330 to 0440/10/Jarzac/10/Jarzac/CN3d/0.5^h 15522E
- 15509.E May 16/1900-2300/10/Jarzac/CN3e kmn. 15523M
- 15510M2. 0330 to 0430/3/Jarzac/CN3d/0.5^h. 15524E
- 15511E. May 17/2000 to midnight/3/Jarzac/CN3e kmn. 15525M
- 15526E

15512M2: 0335-0440/10/Jamaica CN3df 05/07
0.3h

15513E May 18/1915-2300/10/Jamaica/CN3ekbrn

Levy

15514M2 0340-0430/3/Jamaica/CN3df 0.5h

15515E May 19/1930 to 0000/7m/Jamaica/CN3ekbrn
SS3. Sharing the key - TATA Thank you party.

ring
by

15516M2 0330-0440/10/Jamaica/CN3df 0.3h

ekmn.

15517E May 20/2000-2200/7m/Jamaica/CN3ekbrn

e.

15518M2 0340-0445/10/Jamaica/CN3df 0.5h

15519E May 21/2000-2300/7m/Jamaica/CN3df
With Bob Summerfield

15520M2 0340-0440/10/Jamaica/CN3df 1hE
with Bob Summerfield

15521E MAY 22, 2007/2030 to midnight/7m/Jamaica/
CN3e, CN3 kbrn

15522E May 23/2030 to midnight/7m/Jamaica/
CN3kbrn

2mm

1.05h

15523M2 0300 to 0430/10/Jamaica/CN3dfm 0.7hE

15524E May 24/2000-2300/7m/Jamaica/CN3kbrn

15525M2 A: 0300-0420/10/Jamaica/CN3dfm 1hE

mm.

15526E May 25/2000 to midnight/7m/Jamaica/CN3ekbrn

- 15527M2 0300-0430/10/Jarnac/CN3d fm 1^hE 1554
- 15528E May 26/ 2000 to 2330^{int}/7m/Jarnac/CN3 kmnt. 155
- 15529E May 27/2000 to 2300 int/7m/Jarnac/CN3 kmnt. 155
- 15530S May 28/1600-1615/10/Cordelia/SS2 0,0
- 15531E2. May 28/2000 to 2330/7m/CN3 kmnt 155
- 15532E May 28-29/2000 to 2330/7m/Jarnac/
CN3 kmnt. 15E
- 15533S. May 30/1400-1900/10/Jarnac/SS2 0, 1 pr.
Cordelia. New Mount for Hyperion. 155
- 15534E2 2040 to midnight/ CN3 ekmt.
Installation of new mount - I inherit the
Alderone! 155
- 15535E May 31/2030 to 2320/10/Jarnac/CN3 km. 155
- 15536E June 1/2300-2315/6/Champaign - Urbana,
Illinois/Rising of bright gibbous Moon. 155
- 15537E June 3/2255-2315/10/Jarnac/CN3e. 155
- 15538E. June 4/2000 to midnight^{10/Jarnac}/~~2000 to~~/CN3d. 155
- 15539SAN June 5/1830-0350/3,2/MDA Camp, driving
Jarnac/SS3 with children at Camp Shadow Pine,
CN3d 0.7^hE. with Legasus. CN3F. 155

06/07

15540E. June 7/ 2030 to 2300 / 3 / Jarnae / CN3e. Hyperion adjustment.

15541SE. June 8 / 1600-2030 / 3 / Kennedy Space Center. CN3411. Successful + magnificent launch of Atlantis. Wendee, Trip, Ann, Sid + Gloria.

15542E. June 10 / 2000-2300 / 10 / Jarnae / CN3411, CN3e.

15543E. June 11 / 2000-2330 / 10 / Jarnae / CN3411

15544E. June 12 / 2030 to midnight / CN3ekt.

15545M. 0300-0400 / 10 / Jarnae / CN3df. 0.5h.

15546E. June 13. 2000-0000 int / 10 / Jarnae / CN3klb

15547M. 0305-0410 / 10 / Jarnae / CN3df. CN30.7

15548EM. June 14 / 2045 to 0030 / 10 / Jarnae / CN3ekt. Tom and Hyperion.

15549M. 0305-0400 / 10 / Jarnae / CN3df. 0.6h E.

15550E. June 15 / 2100-2330 int / 3, 2 / Jarnae / CN3ekt, e

15551E. June 16 / 2030-2330 / 3 / Jarnae / CN3ekt.

15552M. 0250 to 0400 / 3 / Jarnae / CN3df. 0.6h E.

- 15553E. June 17 / 2030-2255 / 10 / Jarmac / CN3ekt. 1556
- 15554M2 0255-0405 / 10 / Jarmac / CN3df 0.7h E.
Beautiful night.
- 15555E. June 18 / 2025-2300 / int. / 10 / Jarmac / CN3ekt. 1556
- 15556M2 0300-0410 / 10 / Jarmac / CN3df 0.6h E. 1557
- 15557E. June 19 / 2030-2300 int / 10 / Jarmac / CN3ekt. 1557
- 15558M2. 0308-0410 / 10 / Jarmac / CN3df 0.5h E. 1557
- 15559SE. June 20 1925 - 2345i / 10 / Jarmac / CN3ekt. 1557
- 15560M2 June 20 / 0305-0410 / 10 / Jarmac / CN3df 0.7h E. 1557
- 15561E. June 21 / 2030-2300 int / 10 / Jarmac / CN3ekt. 1557
CN36 0.1h W.
- 15562M2 0300-0400 / 3 / Jarmac / CN3df / 0.7h E. 1557
- 15563E June 22 / 2030-2330 int / 10 / Jarmac / CN3ekt. 1557
CN36 0.1h W.
- 15564M2. 0305 to 0415 / 3 / Jarmac / CN3df 0.5h E. 1557
- 15565S. June 23 / 1820-1835 / 3 / Jarmac / SS 20:0, 3 prom- 1557
inences with Cordelia.
- 15566E2. 2015-2300i / 7m / Jarmac / CN3ekt. CN36 0.1h W. 1557
- 15567M3 0305-0410 / 10 / Jarmac / CN3df 0.7h E. 1558

Summer 2007.

06/07

- ekt. 15568.S. Sunday, June 24/1040-1100/10 (Journal)
Mintaka/SS2 0,0,0.
- 15569E2 2000-2300/7m/Journal CN3k/t CN3e.
- ekt. 15570S June 25, Monday/1900-1915/10/1900-1915/
E. 10/Journal SS2 1, 2 with Mintaka.
- 15571E2 2030-2330/7m/Journal CN3k/t. CN3e.
I.S.S.
- 15572S June 26/1800 to 1815/10/Journal/SS2 1, 0
Mintaka.
- 15573E June 26/2045-2330/7m/Journal/CN3k/t.
- 7k E. 15574E June 27, Gerry's birthday/2045-2330/7m/
3k/t. Journal CN3k/t.
- 15575E June 28/2045-2345/7m/Journal/CN3k/t.
- 3ekt. 15576E June 29/2030-2345/7m/Journal/CN3ekt.
- 5k E. 15577E June 30/2015-2345/3m/Journal/CN3ekt.
- rom - 15578E July, Canada Day/2020-2345/3m/Journal
CN3ekt.
- 15579S July 2/1800-1815/3/Journal/Mintaka/SS2 1, 2.
- 15580E2 2020-2330/3/Journal/CN3k.

- 15581S July 3/ 1830-1850/ 10/ Journal Mentakal SS2 1:27. 15
- 15582E2. 2030 to 0000/ 10/ Journal CN3kelt. 15
- 15583S July 4- Independence Day/ 1230-1400/ 3/ Journal CN3M: With Dean, began to install Flaire's new mount. 15
- 15584E2 2030-2230/ 3/ Journal CN3kelt, CN3e. 15
- 15585M. July 10. 10245-0415/ 3/ Journal CN3F 1.1^h E. 15
- 15586SE. July 17/ 1745-2210/ SS2 1:11, 2 with Cordelia- CN3kelt 0.2^h W. 0.1^h W. Continued installation of Flaire's new mount with Dean, Brian, + Scott. 15
- 15587S July 12/ 1000-1020/ 3/ Journal Obs. maintenance. 15
- 15588S July 16/ 1650 to 1705/ 3/ Journal SS2 1:8, 0. 15
- 15589E2 2000 to 2300 int/ 3/ Journal CN3e. 15
- 15590M3 0300-0420/ 3/ Journal CN3f/ 0.3^h E. 15
- 15591S July 17/ 1600 to 1615/ 3/ Journal SS2 1:4, 0. Cordelia- 15
- 15592E2 2020-2130 i/ 3/ Journal CN3e no obs. 15

WPC 21° 2.70
07/07

15593M3 July 17/18/0300 to 0430/3/Jamae
CN3d fm Miranda, Oboliah, Flair/CN3d
0.6 h E.

15594M. July 18/0300-0420/10/Jamae/Mr
CN3d P 0.4 h E.

15595 July 20 1740-1755/10/Jamae 0 - Cordel
No reading, then partial reading. 0 spots, 4

15596S. July 21/1735-1930 int/Jamae/3/
SS2 0. No reading at first, then
partial reading. 0, 0.

15597B. July 26/1825-1840/2/Jamae/Cordel
SS2 0, 2.

15598E2 2015 to 2035/2/Jamae/CN3e J.VC

15599M3. 0300 to 0425/3/Jamae/CN3d fm
0.7 h E. Miranda and Pegasus.

15600E. July 28/2300-2315/3/Jamae/Wendee/
Moon.

15601M. August 2/0030-0100 int/3/Adisondeck/As
omy Retreat/Wendee/Moon in waning gibbous

15602EM. August 3/2200 to 0100/3/AAR/~13 people,
including Wendee/CN3s 1 h NW with Minerva
CMP-1 8 meteors. Very pleasant evening

073°28.87W

+44°15.90N.

Adirondack Astronomy Retreat.

15603EMS. August 4/5/1700-1715/10/AAR/ Steve's
PST/SS20,0.

15604EM2. 1920-0015/10+/AAR/ with Minerva
CN3S, 2.5 West. Jupiter and
M31, lots of globulars. Beautiful night
CMP-1 12 meteors.

15605EM. August 5/1915 to 0100/10+, then 3,3/
AAR/Minerva, East (Our Adirondack
Retreat Telescope) CN3S: 2.5 West.
Beautiful night, sparkling sky; Milky
Way even sharper than last night.
CMP-1: 23 meteors tonight. Also we note
that asteroid is now officially named
Bright Spring.

15606EM August 6/2000 to 0100/3/AAR/
Minerva / CN3S: 1.4 comet search West.
Saw ISS twice, once high in N at 2055;
second at 2231 lower in N and fainter.
CN3 CMP-1 29 meteors through the night.

15607E August 7/2145-0000/3, 2, then 0/AAR/-/
CMP-1 9 meteors including one bright sporadic
and one possible Orion Draconid. No
Minerva this evening. Good conversation and fun.

†15608AN August 8/2000 to 0400/3-10+/AAR/
Minerva, several other telescopes.
CMP-1 Perseid watch - 84 meteors seen

CN3S 3h.30^m, W, S, N, and E.
Sky was ~~partly~~ partly cloudy at first
but between 11+ midnight it cleared
almost completely. Arose ~ 3am
and I got some nice pictures of it.

15609 EM August 9/2100-0100/
21AAR/Peter + others/Vendee/
Our last night at the retreat
wasn't particularly clear but it
was fun nonetheless. CMP-1 5
meteors.

15610 M. August 11/12/0330-0450/
10-1/Jarnae/CMP-1 3 meteors
CN3d 0.1h E.
CN3F.

15611 R S. Aug 12/13/1700-1715/31
Jarnae SS2 with Cordelia: 0, 1.

15612 M2 0335 to 0430/10 t./Jarnae
CN3d 0.8h E.
CN3F.

15613 M August 13/14/0330-0500/
10-3/Jarnae/CMP-1 41 meteors.
with Bob Summerfield.
CN3 0.8h E. CN3F.

- 15614 M. Aug 14/15/ 0400-0500/3/ Jarnac/ CMP-1 13 mts.
 CN3d 0.4^h E. CN3F.
- 15615 S. August 15/1800-1815/3/ Jarnac/
 Cordelia/ SS2 0, 2 hanging big
 prominences.



- 15616 M2 0335 to 0445/10-1/ Jarnac/
 Miranda CN3d 0.8^h E.
 Obadiah CN3F.
- 15617 M August 15/16/ 0340-0500/10/ Jarnac/
 Miranda CN3d 0.8^h E.
 Obadiah CN3F. Suspect rejected.
- 15618 S August 17/1805-1820/3/ Jarnac/
 Cordelia/ CN-SS2 0, 2 prominences.
- 15619 E2 2 1945-2000/3/ Jarnac/3/ Hyperion test.
- 15620 E3 2215-2235/3/ Jarnac/ Hyperion check.
- 15621 E Aug 19/20/ 2215 to 2230/3/ Jarnac/
 Wendee, Beagle + I observe some
 constellations
- 15622 E Aug 20/21/ 1950-2015/7/ Jarnac, Tim/
 We saw FSS+ Endeavor low in North.
- 15623 S. Aug 21/22/ 1810-1825/7/ Jarnac/ Cordelia/
 SS2 0, 6 prominences!

15624 E August 23/24/3/ Jarnae
2215-2230/ Wendel constellations.

15625 M August 22/23/ 0330 to 0445/
• 10/ Jarnae/ CM3d 0.7^h E. CN3F.
CMP-1 3 meteors.