

The Insider's Guide to the Galaxy Presents...

Messier Minutes

a guide to completing RASC's Messier Observing Certificate



Part 4 -

March 1st – 14th, 2022

The following pages include a list of objects discussed in the March 1st, 2022, episode of Messier Minutes. Including finder charts and log pages.

List of Targets Discussed:

Evening Targets (8 - 9 pm)

March 1st is new moon week! Catch the rest of the Winter Messier before mid-March, and it's your second chance at the Crab and Orion Nebulas.

| Messier # | Constellation | Magnitude | Type | NGC | Name |
|-----------|---------------|-----------|------|------|------------------------|
| 41 | CMa | 4.5 | OC | 2287 | Little Beehive Cluster |
| 46 | Pup | 6.1 | OC | 2437 | Melotte 75 |
| 47 | Pup | 4.4 | OC | 2422 | Melotte 47 |
| 48 | Hya | 5.8 | OC | 2548 | Melotte 85 |
| 50 | Mon | 5.9 | OC | 2323 | Heart-Shaped Cluster |
| 93 | Pup | 6.2 | OC | 2447 | Butterfly Cluster |

Notes:

M41:

Naked eye, binoculars, any telescope, bigger than full moon, below and between Pi CMa and v2 CMa. 2.3 kly distant. Count the brighter stars, do they all appear to be the same type?

M50:

Binoculars, any telescope, small and distant (3.2kly), but quite bright. Draw a line from Sirius through the dog's nose (Theta CMa) and double its length. Do you see a shape? Any stars different?

M46:

Harder naked eye, binoculars, any telescope, almost size of full moon, not overly bright. Telescope-close to M47. 13° east of Sirius, or less than halfway from Tureis (Rho Pup) to Delta Mon. Contains planetary nebula NGC 2438 (high power).

M47:

Easy naked eye, binoculars, any telescope, almost size of full moon, handful of bright stars. Telescope-close to M46. 13° east of Sirius, or less than halfway from Tureis (Rho Pup) to Delta Mon.

M48:

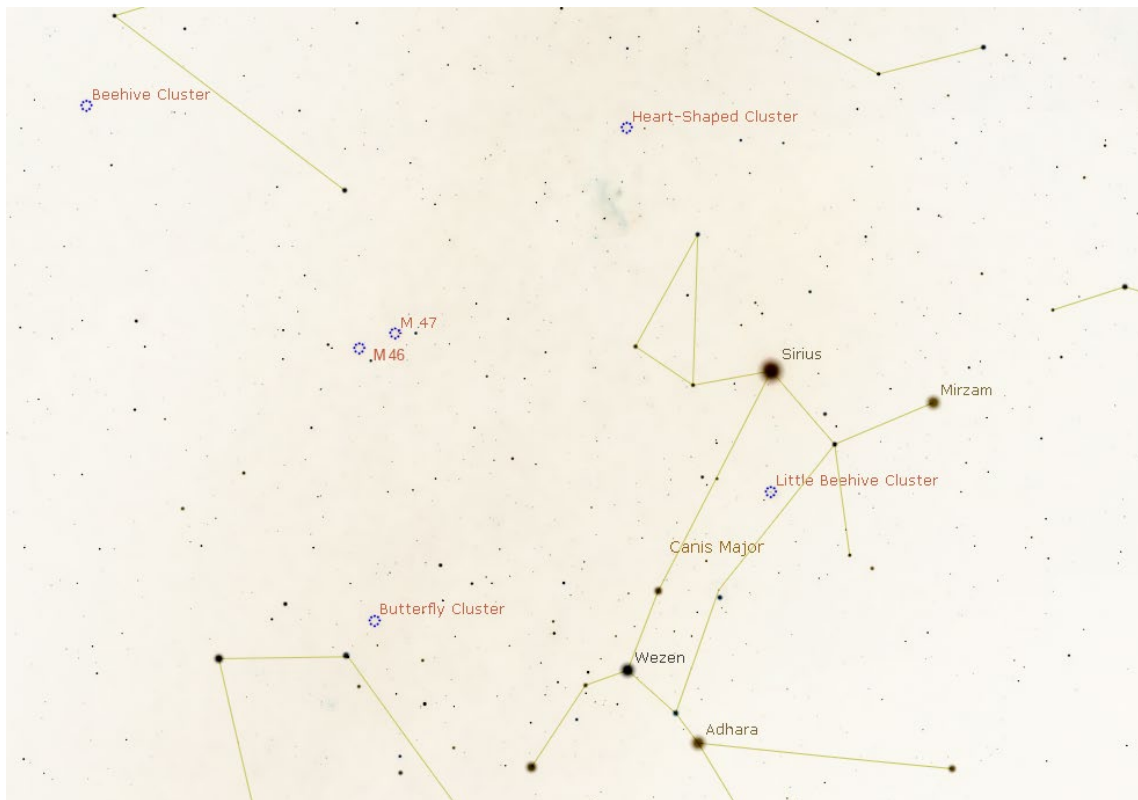
Harder naked eye, binoculars, any telescope, size of full moon. Below and between C Hya and Zeta Mon, on line between C Hya and Alpha Mon. Look for patterns of stars

M93:

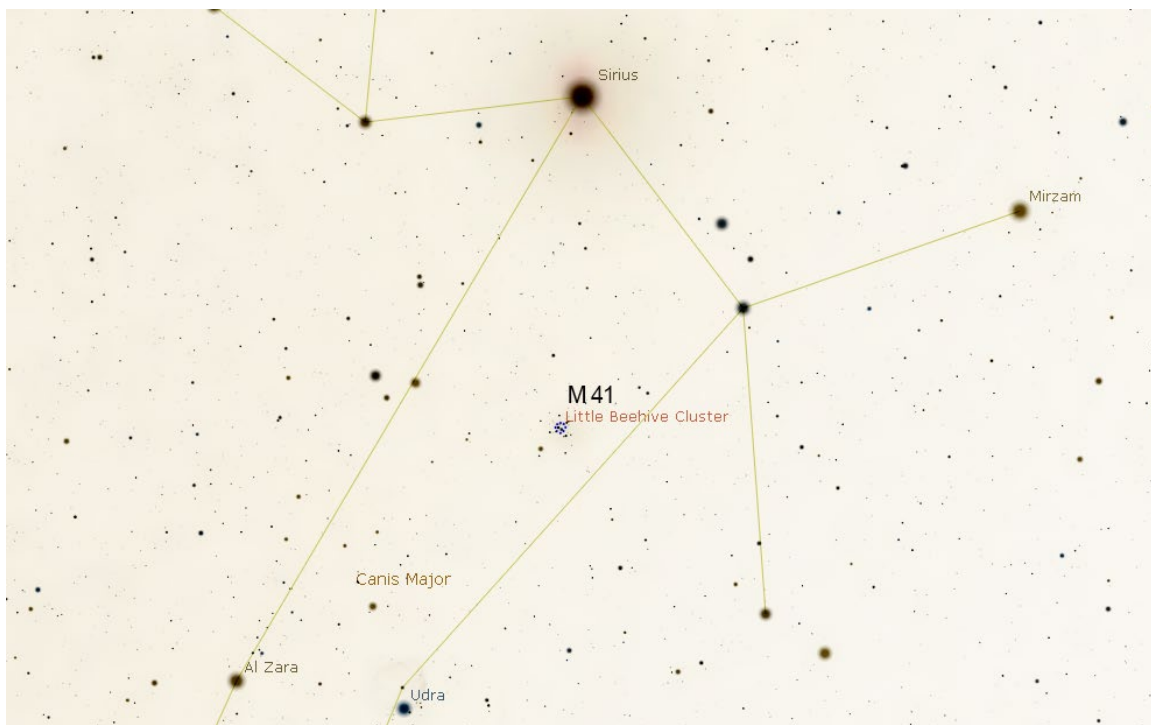
Binoculars, any telescope. Small and less bright, low in south, thumb's width above Azmidi aka Xi Pup, 9° east of Wezen. Count the brighter stars, look for odd stars, patterns

Early Evening Targets Finder Charts:

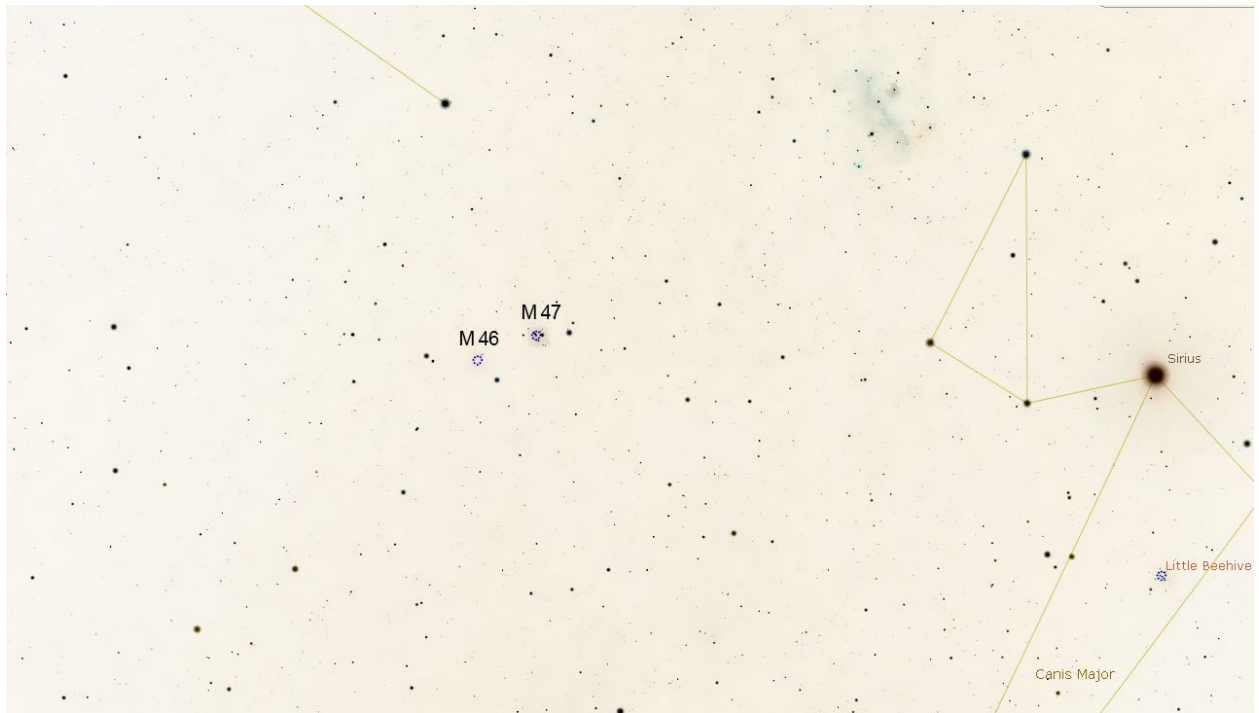
Overview of Targets –



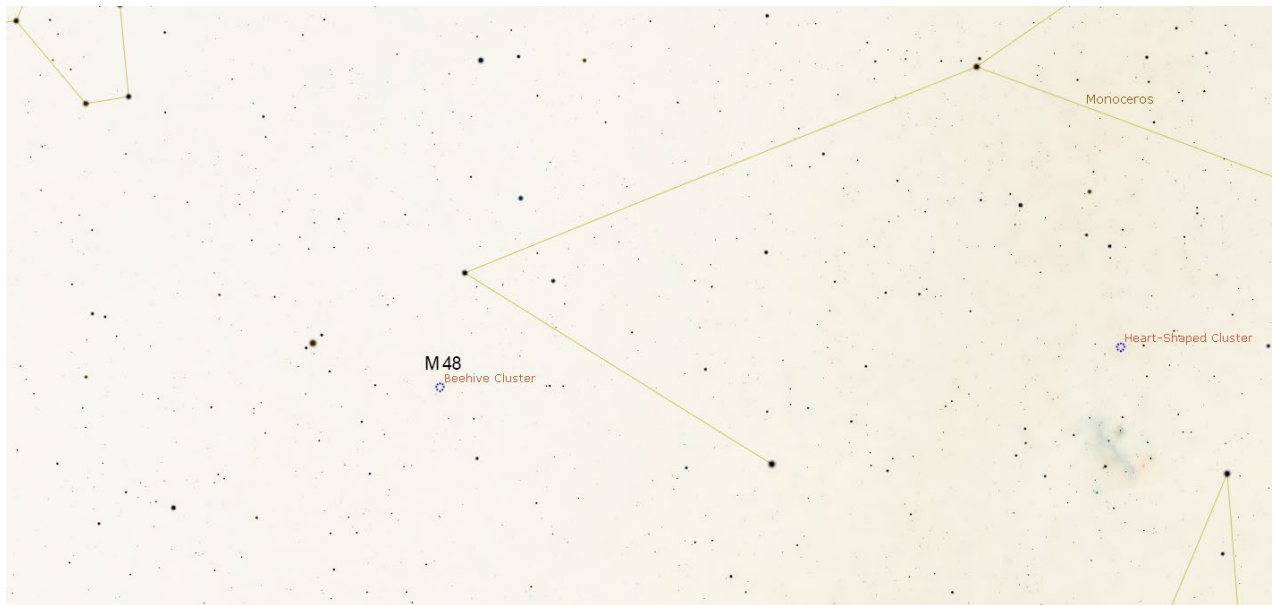
M41 Closer View



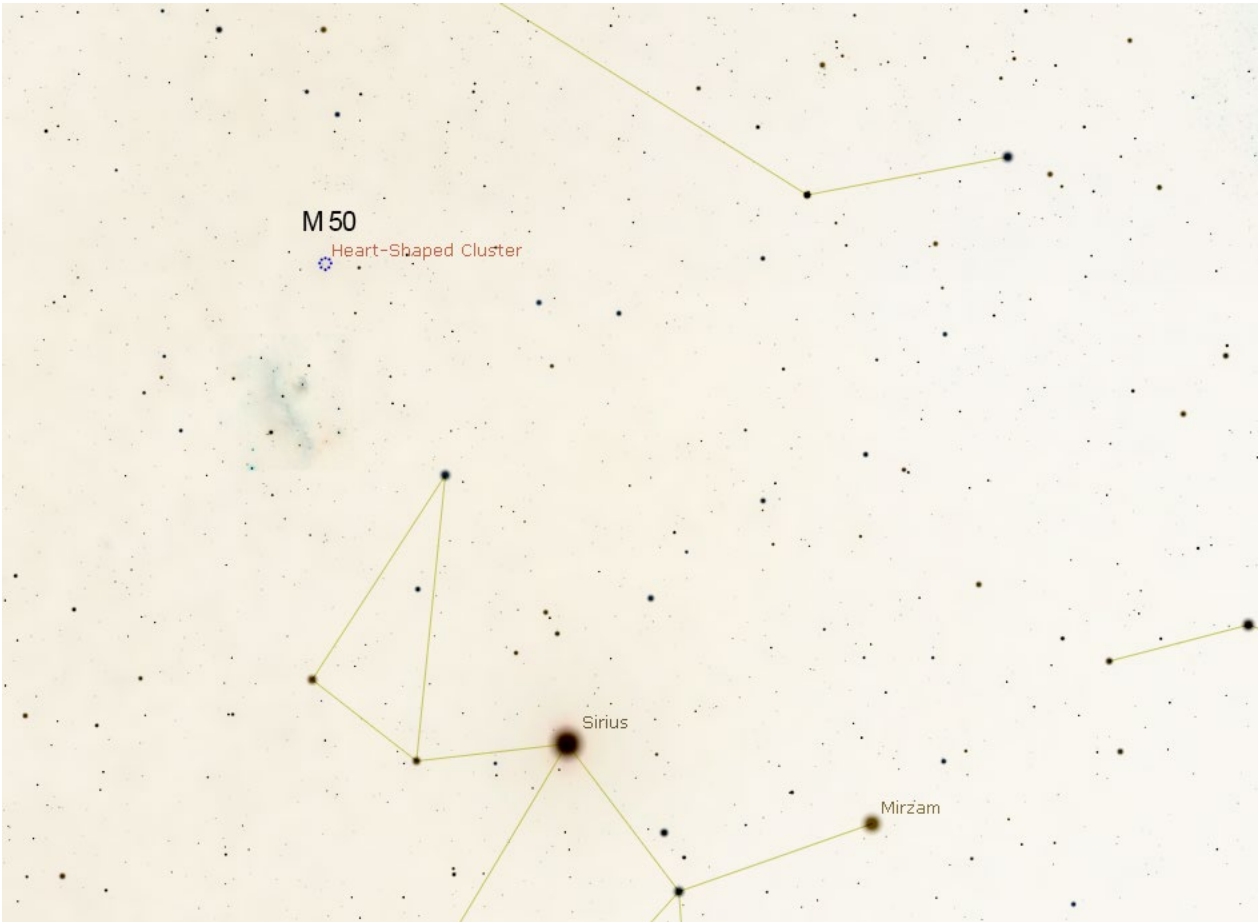
M46 & M47 Closer View



M48 Closer View



M50 Closer View



M93 Closer View

