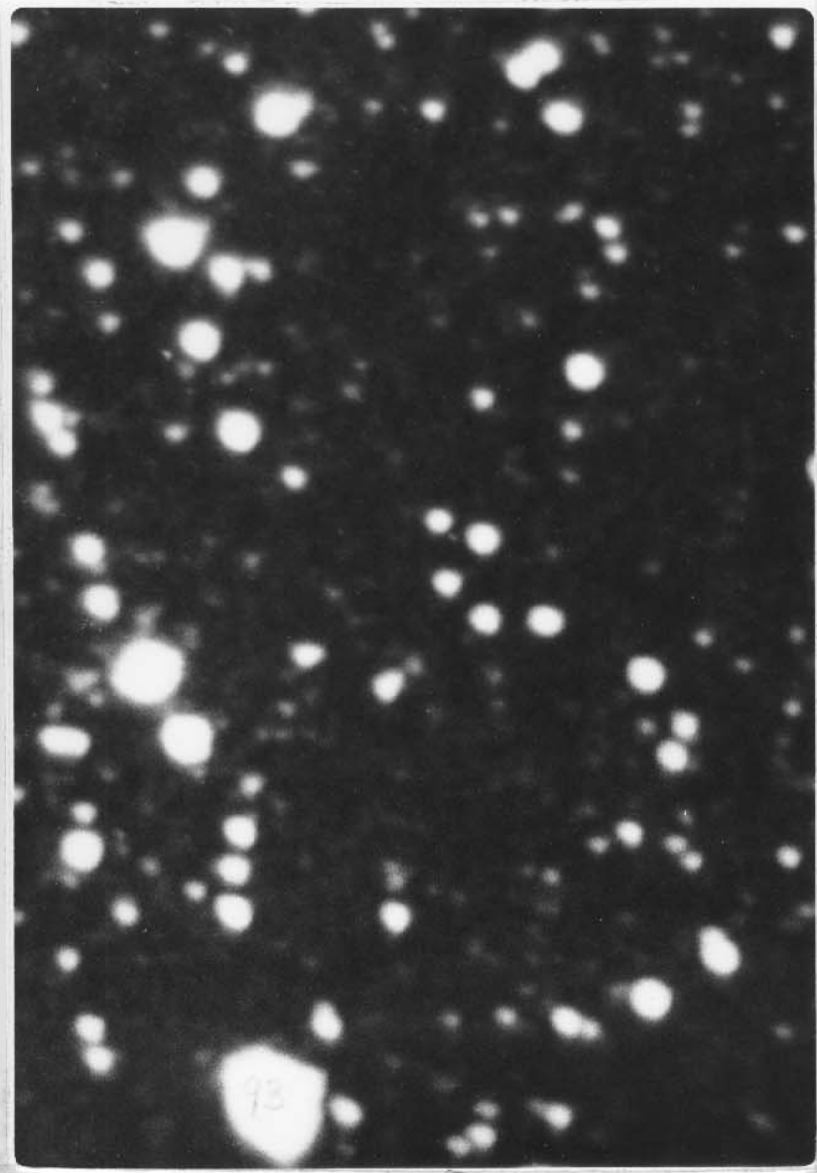


Alfred H Capper

N
RA 17.58
↓

+17.30
→

DEC
← +17.30



↑
S
RA 17.58

Copy of section
Verenber Atlas #150 Her
Enlarged 9x
Bright Star is 93 Herculi

PTO

Comet Kilstou Observed at Pine Top Obs. 00.35 EST Aug 20 1966

Estimated Position, at telescope, RA 17.57.28 DEC 17.45

Position Revised on comparing Verenberg Atlas with drawing at telescope = RA 17.58 DEC 17.30

Drawing at eyepiece

00:35 EST Aug 20 1966

Numerals are Approx. magnitudes estimated

Field of 26mm eyepiece on 10" obj 70" f.l.

Comet not easy to find. Is just like an out of focus faint star

No detail seen at either 70x or 280x

Too faint to show on photo 10min exp on plus X.

